



Lofty Estimation

Accurate Estimates, Every Time

+1-551-294-3809

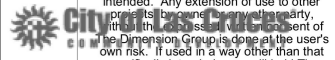
Info@loftyestimation.com

Final Accepted Plan Set

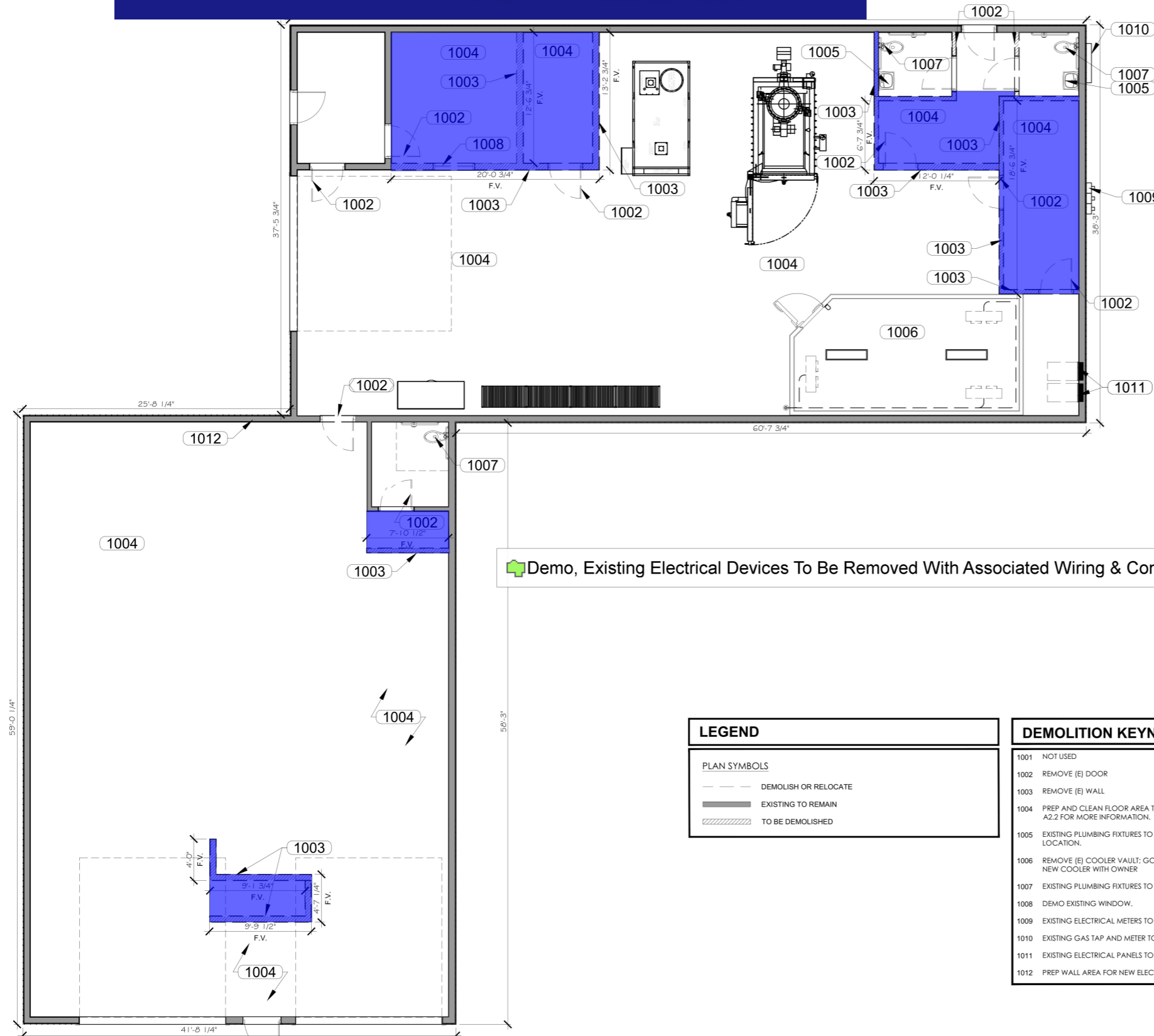
Documents prepared by The Dimension Group are to be used only for the specific project and specific use for which they are intended. Any extension of use to other projects is at the user's own risk. If used in a way other than that specifically intended, user will hold The Dimension Group harmless from all claims and losses.

DATE: 1/31/2024

PERMIT NO. 3CB1500951



GATEWAY SERVICES INC.
REMODEL OF EXISTING PET CREMATORIUM
1753 Buildtek Ct. | Los Cruces, NM



Demo, Existing Electrical Devices To Be Removed With Associated Wiring & Conduit Back To Source Over Walls In This Area

583.3 SQ FT

LEGEND

PLAN SYMBOLS

- DEMOLISH OR RELOCATE
- EXISTING TO REMAIN
- TO BE DEMOLISHED

DEMOLITION KEYNOTES

- 1001 NOT USED
- 1002 REMOVE (E) DOOR
- 1003 REMOVE (E) WALL
- 1004 PREP AND CLEAN FLOOR AREA TO RECEIVE NEW FLOOR FINISHES. REFERENCE A2.2 FOR MORE INFORMATION.
- 1005 EXISTING PLUMBING FIXTURES TO BE MOVED OR REPLACED. REF A2.0 FOR NEW LOCATION.
- 1006 REMOVE (E) COOLER VAULT; GC TO VERIFY SCOPE AND FINAL LOCATION OF NEW COOLER WITH OWNER
- 1007 EXISTING PLUMBING FIXTURES TO REMAIN IN CURRENT LOCATION.
- 1008 DEMO EXISTING WINDOW.
- 1009 EXISTING ELECTRICAL METERS TO REMAIN.
- 1010 EXISTING GAS TAP AND METER TO REMAIN.
- 1011 EXISTING ELECTRICAL PANELS TO BE REUSED IN THE SAME LOCATION.
- 1012 PREP WALL AREA FOR NEW ELECTRICAL PANEL.

DEMOLITION GENERAL NOTES

- A. DO NOT SCALE DRAWINGS. THE CONTRACTOR SHALL FIELD VERIFY ALL DIMENSIONS. NOTIFY THE ARCHITECT IMMEDIATELY WHEN DISCREPANCIES ARE DISCOVERED PRIOR TO PROCEEDING WITH THE CONSTRUCTION.
- B. ALL FLOOR PLAN DIMENSIONS ARE MEASURED AS INDICATED BELOW OR UNLESS OTHERWISE NOTED. WHERE DIMENSION IS ARE NOTED AS 'CLEAR', DIMENSION IS TO FINAL FINISH.
 - 1. FACE OF CMU OR CONCRETE
 - 2. FACE OF METAL OR WOOD STUDS
 - 3. FACE OF FOUNDATIONS
 - 4. CENTERLINE OF COLUMNS.
- C. IT IS THE RESPONSIBILITY OF THE MECHANICAL AND ELECTRICAL SUBCONTRACTORS TO REVIEW ALL OF THE DRAWINGS, INCLUDING ARCHITECTURAL, FOR WORK UNDER THEIR RESPECTIVE CONTRACTS. ROOF PLANS AND REFLECTED CEILING PLANS DESCRIBE MECHANICAL AND ELECTRICAL WORK AS DO OTHER DRAWINGS. NO EXTRAS WILL BE ALLOWED FOR WORK SHOWN IN ANY PART OF THESE DRAWINGS, OR DESCRIBED IN ANY PART OF THE SPECIFICATIONS.
- D. PROVIDE SOLID BLOCKING FOR ALL WALL-MOUNTED FIXTURES AND EQUIPMENT, INCLUDING, BUT NOT LIMITED TO, SINKS (HAND SINKS, SERVICE SINKS, WORK SINKS, ETC.), WALL BRACKETS, SHELVING, ACCESSORIES, HARDWARE AND ANY WALL-HUNG CABINETS OR ITEMS, REGARDLESS OF LOCATION OR ROOM. THIS INCLUDES ALL OWNER-PROVIDED EQUIPMENT THROUGHOUT THE PROJECT. THE CONTRACTOR TO COORDINATE WITH OWNER PRIOR TO INSTALLATION OF GYPSUM WALL BOARD.
- E. THE CONTRACTOR SHALL COORDINATE ALL ITEMS PROVIDED AND/OR INSTALLED BY THE OWNER DURING CONSTRUCTION.
- F. ALL INDICATED ANGLES ARE 45 DEGREES AND 90 DEGREES, U.N.O.
- G. ALL DAMAGE TO (E) AREAS TO REMAIN SHALL BE REPAIRED AND/OR PATCHED TO PROVIDE A SEAMLESS, LIKE NEW APPEARANCE IN SURFACE FINISH.
- H. REPLACED & REMOVED ITEMS: ANY ITEMS NOT TO BE REUSED ARE TO BE STORED OR DISPOSED OF AS DIRECTED BY OWNER.
- I. G.C. TO COORDINATE WITH OWNER TO DETERMINE WHAT ITEMS THAT WILL BE REMOVED SHALL BE SALVAGED FOR OWNER'S REUSE OR DISPOSED OF PROPERLY. G.C. SHALL COORDINATE WITH OWNER ON STORAGE OF ITEMS THAT WILL BE SALVAGED.

PROJECT NUMBER
C 22 - 153

DRAWING ISSUANCE
11/21/2022

DRAWN BY: KD
CHECKED BY: RW

NO.	DESCRIPTION	DATE
01	CITY COMMENTS	03/10/23
02	CITY COMMENTS	06/16/23

DRAWING SEAL

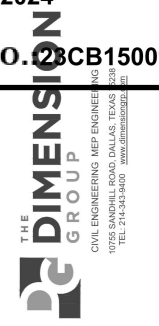


DATE: 06/23/2023
DRAWING TITLE

DEMOLITION FLOOR PLAN
DRAWING NUMBER

D1.0

1 DEMO FLOOR PLAN
3/16" = 1'-0"



GATEWAY SERVICES INC.
 REMODEL OF EXISTING PET CREMATORIUM
 1733 Buildtek Ct. | Los Cruces, NM

PROJECT NUMBER	C 22 - 153	
DRAWING ISSUANCE	11/21/2022	
DRAWN BY:	KD	
CHECKED BY:	RW	
DRAWING REVISIONS		
NO.	DESCRIPTION	DATE
01	CITY COMMENTS	03/10/23
02	CITY COMMENTS	06/16/23

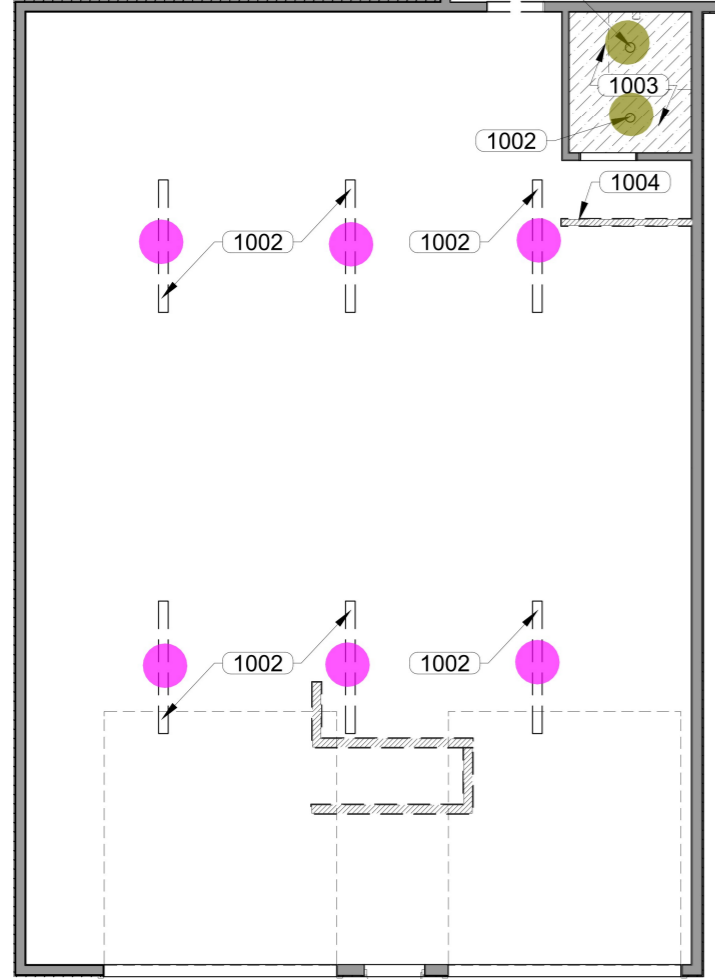
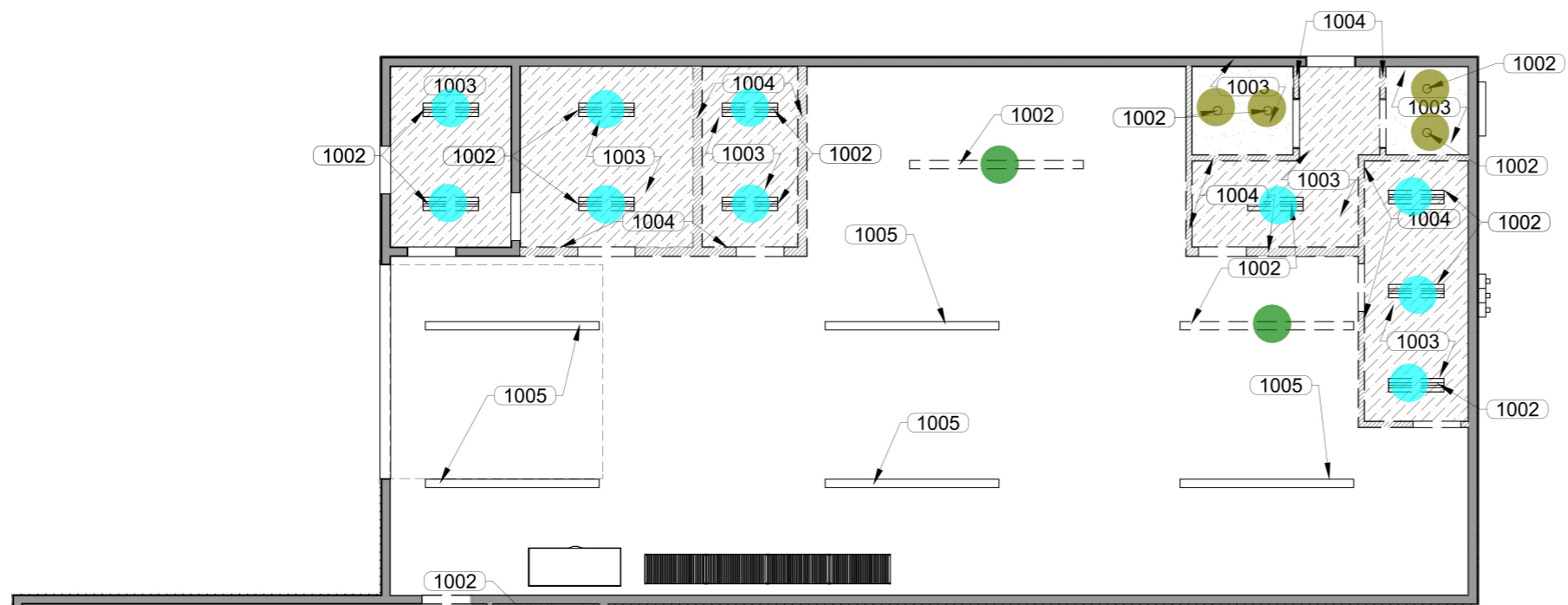
DRAWING SEAL

06/23/2023
06.21.2023

DRAWING TITLE

DEMOLITION
CEILING PLAN

DRAWING NUMBER



- Demo, Existing 8' Linear Light Fixture To Be Removed With Associated Wiring & Conduit **6.0 EA**
- Demo, Existing 1'x4' Linear Light Fixture To Be Removed With Associated Wiring & Conduit **10.0 EA**
- Demo, Existing 12' Linear Light Fixture To Be Removed With Associated Wiring & Conduit **2.0 EA**
- Demo, Existing Recessed Downlight Light Fixture To Be Removed With Associated Wiring &... **6.0 EA**

LEGEND

PLAN SYMBOLS

	DEMOLISH OR RELOCATE
	EXISTING TO REMAIN
	TO BE DEMOLISHED

DEMOLITION KEYNOTES

1001	CEILING TO REMAIN; NOT IN SCOPE
1002	REMOVE EXISTING LIGHTING; GC TO COORDINATE WITH OWNER ON REUSE OR DISPOSAL OF (E) LIGHTING
1003	REMOVE EXISTING GYPSUM BOARD CEILING AND/OR PREP FOR NEW CLG
1004	REMOVE EXISTING WALL
1005	EXISTING LIGHTING TO REMAIN
1006	EXISTING CEILING TO REMAIN

DEMOLITION GENERAL NOTES

- DO NOT SCALE DRAWINGS. THE CONTRACTOR SHALL FIELD VERIFY ALL DIMENSIONS. NOTIFY THE ARCHITECT IMMEDIATELY WHEN DISCREPANCIES ARE DISCOVERED PRIOR TO PROCEEDING WITH THE CONSTRUCTION.
- ALL FLOOR PLAN DIMENSIONS ARE MEASURED AS INDICATED BELOW OR UNLESS OTHERWISE NOTED. WHERE DIMENSION IS ARE NOTED AS 'CLEAR', DIMENSION IS TO FINAL FINISH.
 - FACE OF CMU OR CONCRETE.
 - FACE OF METAL OR WOOD STUDS.
 - FACE OF FOUNDATIONS.
 - CENTERLINE OF COLUMNS.
- IT IS THE RESPONSIBILITY OF THE MECHANICAL AND ELECTRICAL SUBCONTRACTORS TO REVIEW ALL OF THE DRAWINGS, INCLUDING ARCHITECTURAL FOR WORK UNDER THEIR RESPECTIVE CONTRACTS. ROOF PLANS AND REFLECTED CEILING PLANS DESCRIBE MECHANICAL AND ELECTRICAL WORK AS DO OTHER DRAWINGS. NO EXTRAS WILL BE ALLOWED FOR WORK SHOWN IN ANY PART OF THESE DRAWINGS, OR DESCRIBED IN ANY PART OF THE SPECIFICATIONS.
- PROVIDE SOLID BLOCKING FOR ALL WALL-MOUNTED FIXTURES AND EQUIPMENT, INCLUDING, BUT NOT LIMITED TO, SINKS (HAND SINKS, SERVICE SINKS, WORK SINKS, ETC.), WALL BRACKETS, SHELVING, ACCESSORIES, HARDWARE AND ANY WALL-HUNG CABINETS OR ITEMS, REGARDLESS OF LOCATION OR ROOM. THIS INCLUDES ALL OWNER-PROVIDED EQUIPMENT THROUGHOUT THE PROJECT. THE CONTRACTOR TO COORDINATE WITH OWNER PRIOR TO INSTALLATION OF GYPSUM WALL BOARD.
- THE CONTRACTOR SHALL COORDINATE ALL ITEMS PROVIDED AND/OR INSTALLED BY THE OWNER DURING CONSTRUCTION.
- ALL INDICATED ANGLES ARE 45 DEGREES AND 90 DEGREES, U.N.O.
- ALL DAMAGE TO (E) AREAS TO REMAIN SHALL BE REPAIRED AND/OR PATCHED TO PROVIDE A SEAMLESS, LIKE NEW APPEARANCE IN SURFACE FINISH.
- REPLACED & REMOVED ITEMS: ANY ITEMS NOT TO BE REUSED ARE TO BE STORED OR DISPOSED OF AS DIRECTED BY OWNER.
- G.C. TO COORDINATE WITH OWNER TO DETERMINE WHAT ITEMS THAT WILL BE REMOVED SHALL BE SALVAGED FOR OWNER'S REUSE OR DISPOSED OF PROPERLY. G.C. SHALL COORDINATE WITH OWNER ON STORAGE OF ITEMS THAT WILL BE SALVAGED.

1 DEMO CEILING PLAN
3/16" = 1'-0"



GATEWAY SERVICES INC.
 REMODEL OF EXISTING PET CREMATORIUM
 1753 Buildtek Ct. | Los Cruces, NM

- ### GENERAL LIGHTING NOTES
- WORK TO BE DONE IN STRICT COMPLIANCE WITH REQUIREMENTS OF ALL APPLICABLE CODES AND AHJ.
 - EXIT SIGN MOUNTING:
 A. WALL FIXTURE: CENTER 12" ABOVE DOOR OPENING.
 B. CEILING/PENDANT FIXTURE: ON CEILING OR AT HEIGHT SPECIFIED ON DRAWINGS.
 C. THE USE OF TRITIUM BASED RADIOACTIVE EXIT SIGNAGE SHALL NOT BE ALLOWED.
 - EMERGENCY LIGHT INSTALLATION FIXTURE MOUNTING:
 A. WALL FIXTURE: 12" BELOW FINISHED CEILING OR +10'-0" IN AREAS OF EXPOSED STRUCTURE, UNLESS NOTED OTHERWISE.
 B. PENDANT FIXTURE: BOTTOM CHORD OF BAR JOIST OR AT HEIGHT SPECIFIED ON DRAWINGS.
 C. REMOTE HEAD FIXTURE: HEADS CENTERED ABOVE DOOR OPENING +9'-0", UNLESS NOTED OTHERWISE AND BATTERY PACK MOUNTED ON INTERIOR SIDE OF WALL 12" BELOW FINISHED CEILING OR AT BAR JOIST IN AREAS OF EXPOSED STRUCTURE.
 ELECTRICAL CONNECTION:
 A. REFER TO MANUFACTURER'S WRITTEN INSTRUCTIONS. ALLOW BATTERY TO CHARGE CONTINUOUSLY FOR A MINIMUM OF 168 HOURS BEFORE INITIAL TESTING.
 B. AFTER EMERGENCY LIGHT HAS BEEN POWERED DO NOT TURN OFF FOR EXTENDED PERIODS OF TIME.
 - EXIT SIGNS, EMERGENCY LIGHTS AND NIGHT STRIPS SHALL NOT BE SWITCHED.
 - IN AREAS OF OPEN STRUCTURE, MOUNT LED STRIP FIXTURE TO BOTTOM CHORD OF BAR JOIST, UNLESS NOTED OTHERWISE.
 - TGC TO VERIFY NO INSULATION ON TOP OF LIGHT FIXTURES THROUGHOUT.

- ### LIGHTING PLAN KEY NOTES
- SWITCH TO BE WIRED FOR THREE WAY USE.
 - E.C. TO RE-USE CONDUIT AND SWITCHING WHERE POSSIBLE. REPLACE AS NECESSARY.
 - ALL ARRIVAL AND CREMATORY AREAS LIGHTS EXISTING TO REMAIN. CONTRACTOR TO RECONNECT EXISTING LIGHTING TO CIRCUIT B-12 AND MOVE SWITCHES TO NEW LOCATIONS SHOWN.
 - CEILING MOUNTED 360° DEGREE OCCUPANCY SENSOR. WIRED IN PARALLEL. LITHONIA LIGHTING MODEL# CMR 9 (OR EQUAL)
 - BRANCH CIRCUIT WITH SWITCH @ MANAGER'S OFFICE TO BE LOCATED BY OWNER.
 - SHOWROOM LIGHTING SWITCH. FIELD VERIFY EXACT LOCATION. SWITCH TO BE CAPABLE OF 50% DIMMING.
 - EXTERIOR EMERGENCY EGRESS LIGHT TO BE CONNECTED TO LOCAL EXTERIOR LIGHTING. LOCAL EXTERIOR LIGHTING SHALL BE FED FROM HOUSE PANEL.

SYMBOL/FIXTURE SCHEDULE

SYMBOL	DESCRIPTION	MPG/MODEL #	VOLT	LAMP
2x4 LAY-IN	2x4 LED LAY-IN	LITHONIA LIGHTING-2BLT4-48L-ADP-EZ1-LP840	120	45W LED
W/ 90 MIN EMERG BATTERY BACKUP	W/ 90 MIN EMERG BATTERY BACKUP	LITHONIA LIGHTING-2BLT4-48L-ADP-EZ1-LP840-EL7L	120	45W LED
4' LED STRIP WITH ADJUSTABLE AIRCRAFT CABLE	4' LED STRIP WITH ADJUSTABLE AIRCRAFT CABLE	LITHONIA LIGHTING-ZL1D-L48-3000LM-FST-MVOLT-40K-80CRI	120	30W LED
6" LED DOWNLIGHT W/ 90 MIN BATTERY	6" LED DOWNLIGHT W/ 90 MIN BATTERY	LITHONIA LIGHTING-LDN6-40/15-LO6-AR-LSS-MVOLT-EZ1-EL	120	18W LED
4' LED STRIP WITH SURFACE MOUNT	4' LED STRIP WITH SURFACE MOUNT	LITHONIA LIGHTING-CSS-L48-ALO3-MVOLT-SWW3-80CRI-IE7WCP (5000LM 4000K)	120	42W LED
4' LED STRIP W/ SURFACE MOUNT AND 90 MIN BATTERY	4' LED STRIP W/ SURFACE MOUNT AND 90 MIN BATTERY	LITHONIA LIGHTING-CSS-L48-ALO3-MVOLT-SWW3-80CRI-IE7WCP (5000LM 4000K)	120	42W LED
G	LED GUMBALL FIXTURE	WESTINGHOUSE-6660700 ONE-LIGHT INDOOR FLUSH-MOUNT CEILING FIXTURE	120	60W LED
H	4' LED VAPOR TIGHT STRIP	LITHONIA LIGHTING-CSVT-L48-4000LM-MVOLT-40K-80CRI	120	30W LED
EM	LED BUG-EYE EMERGENCY LIGHTING W/ 90 MIN BATTERY	LITHONIA LIGHTING-EU2C	120	1W LED
N	LED EXTERNAL EMERGENCY LIGHTING W/ 90 MIN BATTERY	LITHONIA LIGHTING-AFF-OEL-DBLBXD-UVOLT-LTP-SDRT-WT	120	3W LED
X1	LED EXIT EMERGENCY LIGHTING W/ 90 MIN BATTERY	LITHONIA LIGHTING-LQM-S-W-3-R-120/277-EL N	120	1W LED
OS	SWITCH WITH OCCUPANCY SENSOR	G.C. TO PROVIDE	120	N/A
D	DIMMER SWITCH	G.C. TO PROVIDE	120	N/A

4.0 EA	2.0 EA	1.0 EA	10.0 EA	3.0 EA	1.0 EA	2.0 EA	15.0 EA	13.0 EA	2.0 EA	2.0 EA	1.0 EA	8.0 EA	4.0 EA	1.0 EA	2.0 EA	3.0 EA	8.0 EA	160.2 FT	392.0 FT	667.5 FT
OBJECT NUMBER C 22 - 153																				
DRAWING ISSUANCE 11/21/2022																				
DRAWN BY: CR																				
CHECKED BY: AH																				
DRAWING REVISIONS																				
DESCRIPTION DATE																				
CITY COMMENTS 03/10/23																				
CITY COMMENTS 06/16/23																				
DRAWING SEAL																				
DRAWING TITLE LIGHTING PLAN																				
DRAWING NUMBER E1.0																				

- LC, 3-Way Dimmer Switch, Wall Mounted
- LC, 3-Way Switch, Wall Mounted, HUBBELL HBL-1223
- LC, Dimmer Switch, Wall Mounted
- LC, Occupancy Sensor Switch, Wall Mounted
- LC, Occupancy Sensor, Ceiling Mounted, LITHONIA #CMR9
- LC, Show Room Lighting Switch With Dimmer
- LC, Single Pole Switch, Wall Mounted, HUBBELL HBL-1221
- LF, A: 2x4 LED Lay-In Troffer, LITHONIA LIGHTING 2BLT4-48L-ADP-EZ1-LP840 Watts: 45W
- LF, AE: 2x4 LED Lay-In Troffer With 90 Min Battery Backup, LITHONIA LIGHTING 2BLT4-48L-ADP-EZ1-LP840-EL7L Watts: 45W
- LF, C: 4' LED Strip With Adjustable Aircraft Cable, LITHONIA LIGHTING ZL1D-L48-3000LM-FST-MVOLT-40K-80CRI-ZACH M100 Watts: 30W
- LF, D: 6" LED Downlight, LITHONIA LIGHTING LDN6-40/15-LO6-AR-LSS-MVOLT-EZ1 Watts: 18W
- LF, DE: 6" LED Downlight With 90 Min Battery Backup, LITHONIA LIGHTING LDN6-40/15-LO6-AR-LSS-MVOLT-EZ1-EL Watts: 18W
- LF, EM: LED Bug Eye Emergency Lighting W/ 90 Min Battery, LITHONIA LIGHTING EU2C Watts: 1W
- LF, F: 4' LED Strip With Surface Mount, LITHONIA LIGHTING CSS-L48-ALO3-MVOLT-SWW3-80CRI (5000LM 4000K) Watts: 42W
- LF, FE: 4' LED Strip With Surface Mount With Battery Backup, LITHONIA LIGHTING CSS-L48-ALO3-MVOLT-SWW3-80CRI-IE7WCP (5000LM 4000K) Watts: 42W
- LF, G: LED Gumball Fixture, WESTINGHOUSE 6660700 ONE LIGHT INDOOR FLUSH MOUNT CEILING FIXTURE Watts: 60W
- LF, H: 4' LED Vapor Tight Strip, LITHONIA LIGHTING CSVT-L48-4000LM-MVOLT-40K-80CRI, Watts: 30W
- LF, N: LED External Emergency Lighting With 90 Min Battery Backup, LITHONIA LIGHTING AFF-OEL-DBLBXD-UVOLT-LTP-SDRT-WT Watts: 3W
- LF, X1: LED Exit Emergency Lighting With Battery Backup, LITHONIA LIGHTING LQM-S-W-3-R-120/277-EL N Watts: 1W
- LFW, 3#10, 3/4" EMT Conduit
- LFWH, 3#12, 3/4" EMT Conduit
- LFW, 3#12, 3/4" EMT Conduit

