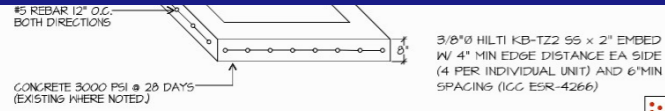




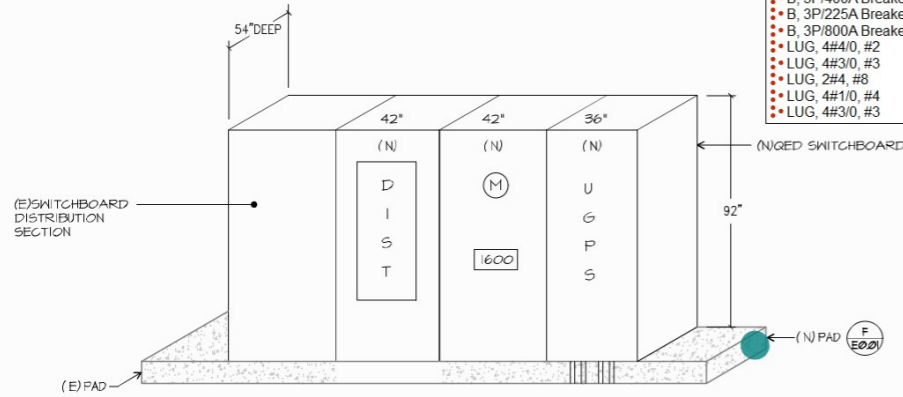
# Lofty Estimation

Accurate Estimates, Every Time

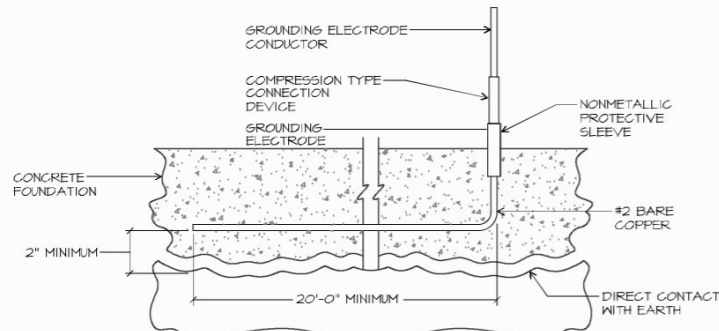
+1-551-294-3809 Info@loftyestimation.com



HOUSEKEEPING PAD DETAIL SCALE: NONE

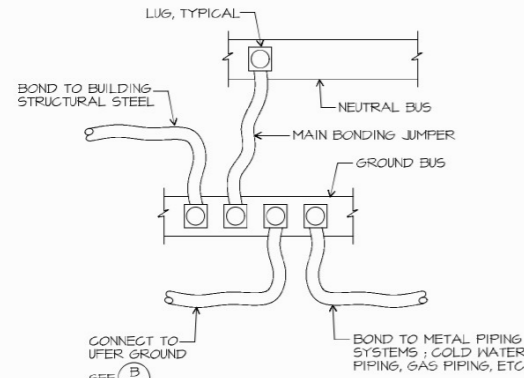


SWITCHBOARD ELEVATION SCALE: NONE



THE GROUNDING SYSTEM SHALL CONSIST OF A "UFER" TYPE 20' LONG OF #2 BARE COPPER CONDUCTOR EMBEDDED ALONG THE BOTTOM OF A CONCRETE FOOTING OR GRADE BEAM THAT IS IN DIRECT CONTACT WITH THE EARTH.

UFER GROUND DETAIL SCALE: NONE



BONDING DIAGRAM SCALE: NONE

ELECTRICAL LOAD CALCULATIONS	
EXISTING MAXIMUM DEMAND	= 382A
MINUS CHILLER LOAD	= 415A
382A X 1.25	= 477.5A
PANEL M1	: 284A
PANEL M2	: 243A
PANEL M3	: 216A
PANEL M4	: 180A
TOTAL	= 1556A
AT2TT/480 VOLTS 3 PHASE	= 1,296,148VA

- MISC, House Keeping Pad (For New Switch Board Sections)
- DEMO, Existing 3P/600A Breaker To Be Removed
- GND, 20' Long #2 Bare CU Ufer Grounding
- Switchboard MS (3 Sections), 1600A, 277/480V, 3Ph, 4W, Mains: MCB, 30KAIC, 5 Spaces, Pad Mounted, NEMA 3R, SQUARE D ...
- DIST, 1600A Underground Pull Section, WP
- DIST, 1600A Meter
- B, 3P/1600A RMS MCB, GF
- B, 3P/400A Breaker
- B, 3P/225A Breaker
- B, 3P/800A Breaker
- LUG, 4#4/0, #2
- LUG, 4#3/0, #3
- LUG, 2#4, #8
- LUG, 4#1/0, #4
- LUG, 4#3/0, #3

## GENERAL NOTES

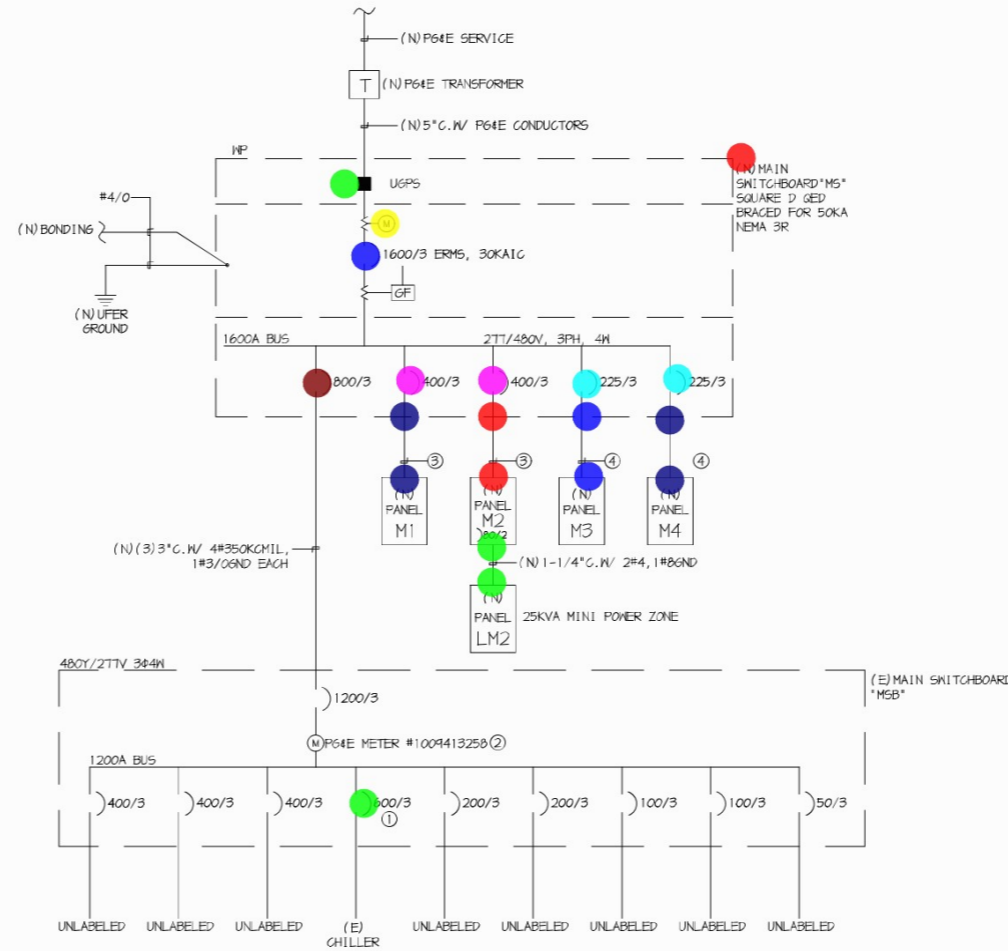
- VISIT JOB SITE AND VERIFY EXISTING CONDITIONS PRIOR TO BID.
- THE ELECTRICAL WORK SHALL BE INSTALLED IN ACCORDANCE WITH THE 2019 CALIFORNIA ELECTRICAL CODE AND ALL APPLICABLE LOCAL ORDINANCES WHERE PLANS CALL FOR A HIGHER STANDARD THAN APPLICABLE CODES, THE PLANS SHALL GOVERN.
- CONDUIT RUNS ARE SHOWN DIAGRAMMATICALLY. EXACT LOCATIONS SHALL BE DETERMINED IN THE FIELD TO SUIT FIELD CONDITIONS.
- ALL ELECTRICAL EQUIPMENT, APPLIANCES AND LIGHTING FIXTURES SHALL BE LISTED BY A RECOGNIZED TEST LAB AND BEAR THAT LABEL OF APPROVAL.
- CONTRACTOR SHALL FURNISH, INSTALL AND CONNECT ALL MATERIAL AND EQUIPMENT FOR THIS WORK UNLESS OTHERWISE NOTED.
- FURNISH DISCONNECT SWITCHES AT REMOTE MOTORS.
- ALL SPACES AS INDICATED ON PANELS OR SWITCHBOARDS SHALL BE COMPLETE WITH HARDWARE AND BUSING FOR FUTURE BREAKER OR SWITCH.
- CHECK ARCHITECTURAL PLANS FOR DOOR SWINGS BEFORE INSTALLING SWITCH OUTLETS.
- GROUNDING AND BONDING SHALL BE PER CODE PLUS ANY ADDITIONAL PROVISIONS SPECIFIED OR SHOWN ON DRAWINGS.
- ALL CONDUIT RUNS SHALL CONTAIN A CODE SIZED GREEN GROUND WIRE.
- THESE PLANS ARE NOT COMPLETE UNTIL APPROVED BY THE AUTHORITY HAVING JURISDICTION.
- ALL FEEDER CONDUCTORS SHALL BE IN CONDUIT. BRANCH CIRCUITS MAY BE NON-METALLIC SHEATHED CABLE.
- ALL CONDUCTORS SHALL BE COPPER WITH TYPE THHN/THWN INSULATION.
- COORDINATE WITH SERVING ELECTRICAL UTILITY COMPANY AND MAKE PROVISIONS FOR ELECTRICAL SERVICE ACCORDINGLY. INCLUDE ALL SERVICE COSTS AND UTILITY COMPANY CHARGES IN BID.

## SINGLE LINE NOTES

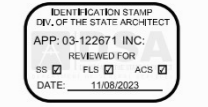
- REMOVE EXISTING CHILLER FEED BREAKER
- EXISTING METER SOCKET TO BE BLANKED OFF
- (N) (2) 2-1/2" C. W/ (4) #5/0 (1) #6 GND
- (N) (1) 2-1/2" C. W/ (4) #4/0, (1) #6 GND

## SYMBOLS

- CONDUIT EXISTING
  - CONDUIT CONCEALED IN WALL OR CEILING
  - CONDUIT CONCEALED UNDER FLOOR OR BELOW GRADE
  - CONDUIT STUMPED OUT AND CAPPED
  - CONDUIT TURNED UP
  - CONDUIT TURNED DOWN
  - HATCH MARKS INDICATE NO. OF #12 WIRES IN CORE SIZED CONDUIT (S) MAX IN 1/2" C., (S) MAX IN 3/4" C., (S) MAX IN 1", NO MARKS = 2#8
  - HOME RUN LETTER INDICATES PANEL NUMBER(S) INDICATES CIRCUIT(S)
  - SAWGUT
  - GROUND CONNECTION
  - DISTRIBUTION SWITCHBOARD OR PANEL
  - PANEL BRANCH CIRCUIT TYPE, SURFACE AND FLUSH SIGNAL TERMINAL CABINET, SURFACE & FLUSH
  - LINEAR SURFACE FIXTURE
  - OUTLET DATA: BAR INDICATES WALL MOUNT, LETTER INDICATES SWITCH CONTROL, NO. INDICATES CIRCUIT.
  - SURFACE FIXTURE ON FLUSH OUTLET.
  - RECESSED FIXTURE WITH JUNCTION BOX FOR THRU WIRING
  - EXIT LIGHT WITH ARROWS AS SHOWN ON PLANS, WALL AND CEILING MOUNT.
  - LOW LEVEL EXIT SIGN, 4" AFF, 4" FROM DOOR JAMB
  - LIGHT FIXTURE DESIGNATION, LETTER INDICATES TYPE, NO. INDICATES WATTAGE - SEE FIXTURE SCHEDULE
  - MECHANICAL EQUIPMENT DESIGNATION. SEE MECHANICAL DRAWINGS.
  - SPECIAL RECEPTACLE - SEE PLAN
  - METER
  - FLUSH FLOOR RECEPTACLE
  - RECEPTACLE, DUPLEX, 15A, 125V, NEMA 5-15R +8" UNO
  - DUPLEX RECEPTACLE MTD. ABOVE BACKPLASH
  - DUPLEX RECEPTACLE W/LOWER HALF SWITCHED
  - GROUND FAULT CIRCUIT INTERRUPTING RECEPTACLE
  - DOUBLE DUPLEX RECEPTACLE
  - CEILING RECEPTACLE
  - RECEPTACLE, DUPLEX, 20A, 125V, NEMA 5-20R +8" UNO
  - JUNCTION BOX 4" SQUARE, 1-1/2" DEEP UNO
  - THERMOSTAT "R20" +8"
  - MOTOR, NO. INDICATES HORSEPOWER
  - CLOCK OUTLET +7-6" UNO
  - DISCONNECT SWITCH NON-FUSED
  - DISCONNECT SWITCH FUSED HORSEPOWER RATED OR SIZED AS NOTED
  - COMBINATION MAGNETIC STARTER WITH DISCONNECT SWITCH AND FUSES
  - MAGNETIC MOTOR STARTER W/OVERLOADS IN EACH PHASE
  - DIMMER W/INTEGRAL "ON-OFF" SW.
  - PUSHBUTTON
  - PHOTOCELL
  - SMOKE DETECTOR
  - TELEPHONE/COMPUTER/DATA OUTLET, TWO GANG BOX W/1 GANG COVERPLATE & SQUARE METED OPENING +8" UNO
  - CABLE TV OUTLET +8" UNO
  - MOTION SENSOR
  - EXISTING SWITCH
  - SINGLE POLE SWITCH
  - DOUBLE POLE SWITCH
  - THREE WAY SWITCH
  - SWITCH W/PLOT LT.
  - MANUAL MOTOR STARTER
  - FACP
  - FIRE ALARM CONTROL PANEL
  - GROUND FAULT CIRCUIT INTERRUPTING LABOR SAVING TANKS
  - MAN LUGS ONLY
  - W/
  - C.O.
  - WEATHERPROOF
  - FURNISHED BY OTHERS, INSTALL & CONNECT UNLESS NOTED OTHERWISE
  - NATIONAL ELECTRICAL CODE
  - NOT IN CONTRACT
  - EXISTING
  - NEW
  - REMOVE
  - RELOCATE
  - S/M
  - U/G
  - CWP
  - HAZR
  - N.L.
- NOTE: NOT ALL SYMBOLS SHOWN ARE USED ON THIS PROJECT.



SINGLE LINE DIAGRAM

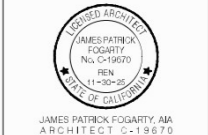


3434 Truxtun Avenue, Suite 240  
Bakersfield, California, 93301  
Tel: 661.327.7890 Fax: 661.327.7204  
Web: www.cjparell.com

## CAMPUS HVAC SYSTEM UPGRADE

Horace Mann Elementary School  
2710 Niles St, Bakersfield, CA, 93306  
Bakersfield City School District

## ARCHITECT



## CONSULTANT



## PROJECT INFO

Project No:	696-009
Date:	10/14/23
DSA File No:	156
DSA No:	05-12851

## REVISIONS

No.	Date	Item

THESE DRAWINGS ARE INSTRUMENTS OF SERVICE AND ARE THE PROPERTY OF AN ARCHITECT. ALL DESIGN AND DRAWINGS ARE FOR THE USE ON THE SPECIFIC PROJECT AND SHALL NOT BE USED OTHERWISE WITHOUT THE EXPRESS WRITTEN PERMISSION OF AN ARCHITECT. WRITTEN SHALL HAVE PRECEDENCE OVER SCALED DIMENSIONS. CONTRACTORS SHALL VERIFY AND BE RESPONSIBLE FOR ALL DIMENSIONS AND CONDITIONS SHOWN BY THESE DRAWINGS. SHOP DETAILS SHALL BE SUBMITTED TO THIS OFFICE FOR APPROVAL BEFORE PROCEEDING WITH FABRICATION.

## SINGLE LINE DIAGRAM GENERAL NOTES

E0.01

(N) PANEL " M3													
SERVICE: 277/480V 3Φ 4W				MAIN BKR: 225A				BUS: 225A				LOC: SEE PLAN MTG: SURFACE	
REMARKS	LOAD			R E C	L T G	M I S C	P O L E	C I R C	R E C	L T G	M I S C	REMARKS	
	ΦA	ΦB	ΦC										ΦA
HP-1	7401						1	2				HP-1	
-		7401					3	4				-	
-			7401				5	6				-	
HP-1	7401						7	8				HP-1	
-			7401				9	10				-	
-		7401					11	12				-	
HP-1	7401						13	14				HP-1	
-			7401				15	16				-	
-		7401					17	18				-	
-							19	20				-	
-							21	22				-	
-							23	24				-	
-							25	26				-	
-							27	28				-	
-							29	30				-	
-							31	32				-	
-							33	34				-	
-							35	36				-	
-							37	38				-	
-							39	40				-	
-							41	42				-	
TOTAL WATTS=	133218												
AMPS=	160.24 +8.97(1.25 X LARGEST MOTOR)=169.21A												

(N) PANEL " M1 "													
SERVICE: 277/480V 3Φ 4W				MAIN BKR: 400				BUS: 400A				LOC: SEE PLAN MTG: SURFACE	
REMARKS	LOAD			R E C	L T G	M I S C	P O L E	C I R C	R E C	L T G	M I S C	REMARKS	
	ΦA	ΦB	ΦC										ΦA
HP-1A	7401						1	2				HP-1A	
-		7401					3	4				-	
-			7410				5	6				-	
HP-1B	7401						7	8				HP-1B	
-			7401				9	10				-	
-		7401					11	12				-	
HP-1C	7401						13	14				HP-1C	
-			7401				15	16				-	
-		7401					17	18				-	
HP-1D	7401						19	20				HP-1D	
-			7401				21	22				-	
-							23	24				-	
-							25	26				-	
-							27	28				-	
-							29	30				-	
-							31	32				-	
-							33	34				-	
-							35	36				-	
-							37	38				-	
-							39	40				-	
-							41	42				-	
TOTAL WATTS=	177633												
AMPS=	213.66 +8.97(1.25 X LARGEST MOTOR)=222.63A												

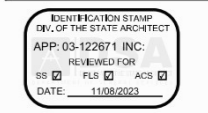
(N) PANEL " M2 "													
SERVICE: 277/480V 3Φ 4W				MAIN BKR: 400				BUS: 400A				LOC: SEE PLAN MTG: SURFACE	
REMARKS	LOAD			R E C	L T G	M I S C	P O L E	C I R C	R E C	L T G	M I S C	REMARKS	
	ΦA	ΦB	ΦC										ΦA
HP-1	7401						1	2				HP-1	
-		7401					3	4				-	
-			7401				5	6				-	
HP-1	7401						7	8				HP-1	
-			7401				9	10				-	
-		7401					11	12				-	
HP-1	7401						13	14				HP-1	
-			7401				15	16				-	
-		7401					17	18				-	
HP-2	7030						19	20				HP-2	
-			7030				21	22				-	
-							23	24				-	
-							25	26				-	
-							27	28				-	
-							29	30				-	
-							31	32				-	
-							33	34				-	
-							35	36				-	
-							37	38				-	
-							39	40				-	
-							41	42				-	
TOTAL WATTS=	193950												
AMPS=	233.29 +13.91(1.25 X LARGEST MOTOR)=257.19												

(N) PANEL " M4 "													
SERVICE: 277/480V 3Φ 4W				MAIN BKR: 225A				BUS: 225A				LOC: SEE PLAN MTG: SURFACE	
REMARKS	LOAD			R E C	L T G	M I S C	P O L E	C I R C	R E C	L T G	M I S C	REMARKS	
	ΦA	ΦB	ΦC										ΦA
HP-1	7401						1	2				HP-1	
-		7401					3	4				-	
-			7401				5	6				-	
HP-1	7401						7	8				HP-1	
-			7401				9	10				-	
-		7401					11	12				-	
HP-1	7401						13	14				HP-1	
-			7401				15	16				-	
-		7401					17	18				-	
-							19	20				-	
-							21	22				-	
-							23	24				-	
-							25	26				-	
-							27	28				-	
-							29	30				-	
-							31	32				-	
-							33	34				-	
-							35	36				-	
-							37	38				-	
-							39	40				-	
-							41	42				-	
TOTAL WATTS=	111015												
AMPS=	133.53 +8.97(1.25 X LARGEST MOTOR)=142.5A												

(N) PANEL " LM2 "													
SERVICE: 120/240V 1Φ 3W				MAIN BREAKER: 100A				BUS: 100A				LOC: SEE PLAN MTG: SURFACE	
REMARKS	LOAD			R E C	L T G	M I S C	P O L E	C I R C	R E C	L T G	M I S C	REMARKS	
	ΦA	ΦB	ΦC										ΦA
HP-3	4638						1	2				HP-3	
-		4638					3	4				-	
-			4638				5	6				-	
-							7	8				-	
-							9	10				-	
TOTAL WATTS=	18552												
AMPS=	89.192												

- Panel M3, 225A, 277/480V, 3Ph, 4W, Mains: MCB, 10K AIC, 42 Poles, Surface Mounted, NEMA 3R
- Panel M1, 400A, 277/480V, 3Ph, 4W, Mains: MCB, 10K AIC, 42 Poles, NEMA 1
- Panel M2, 400A, 277/480V, 3Ph, 4W, Mains: MCB, 10K AIC, 42 Poles, NEMA 1
- Panel M4, 225A, 277/480V, 3Ph, 4W, Mains: MCB, 10K AIC, 42 Poles, NEMA 3R
- Panel LM2, 100A, 120/240V, 1Ph, 3W, Mains: MCB, 10K AIC, 10 Poles, Surface Mounted, NEMA 1
- B, 3P/30A Breaker
- B, 3P/40A Breaker
- B, 2P/45A Breaker
- B, 3P/225A MCB
- B, 2P/100A MCB
- B, 3P/400A MCB
- B, 3P/30A Breaker
- B, 3P/225A MCB

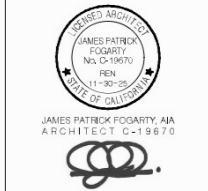
- 1.0 EA
- 1.0 EA
- 1.0 EA
- 1.0 EA
- 1.0 EA
- 16.0 EA
- 5.0 EA
- 2.0 EA
- 1.0 EA
- 1.0 EA
- 2.0 EA
- 6.0 EA
- 1.0 EA



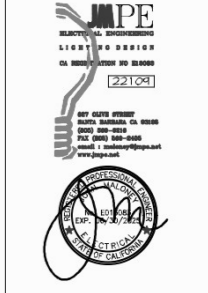
CAMPUS HVAC SYSTEM UPGRADE

Horace Mann Elementary School  
2710 Niles St, Bakersfield, CA, 93306  
Bakersfield City School District

ARCHITECT



CONSULTANT



PROJECT INFO	
Project No	588-0016
Date	11/03/23
DSA File No	156
DSA No	03-122671

REVISIONS		
No	Date	Item

THESE DRAWINGS ARE INSTRUMENTS OF SERVICE AND ARE THE PROPERTY OF AP ARCHITECTS. ALL DESIGN AND DRAWINGS ARE FOR THE USE ON THE SPECIFIED PROJECT AND SHALL NOT BE USED OTHERWISE WITHOUT THE EXPRESS WRITTEN PERMISSION OF AP ARCHITECTS. WRITTEN SHALL HAVE PRECEDENCE OVER BOLD OR SHOWN CONTRACTORS SHALL VERIFY AND BE RESPONSIBLE FOR ALL DIMENSIONS AND CONDITIONS SHOWN BY THESE DRAWINGS. SHOP DETAILS SHALL BE SUBMITTED TO THIS OFFICE FOR APPROVAL, BEFORE PROCEEDING WITH FABRICATION.

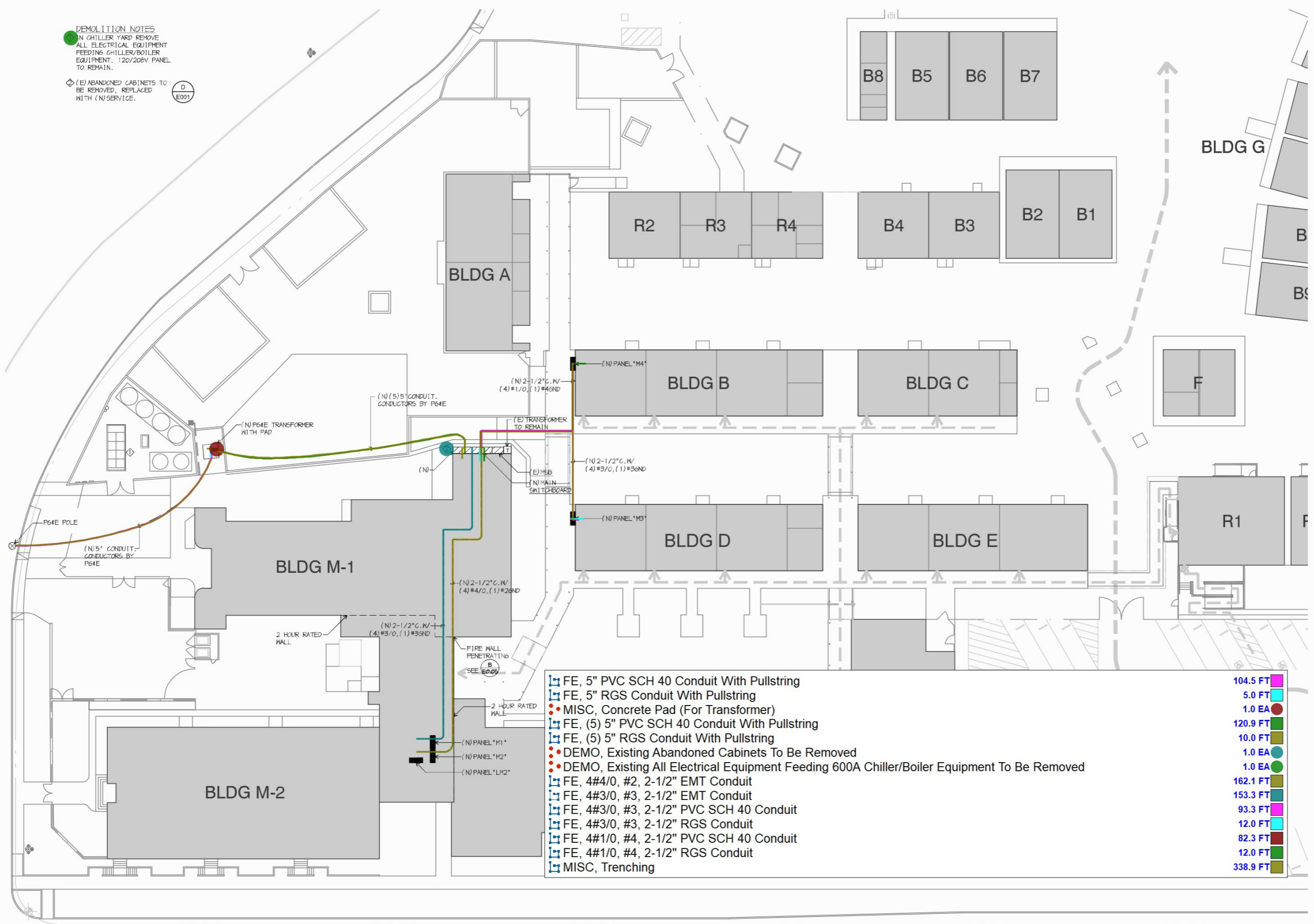
PANEL SCHEDULES

E0.02

**DEMOLITION NOTES**  
 IN CHILLER YARD REMOVE ALL ELECTRICAL EQUIPMENT FEEDING CHILLER/BOILER EQUIPMENT. 120/208V PANEL TO REMAIN.

(E) ABANDONED CABINETS TO BE REMOVED, REPLACED WITH (N) SERVICE.

(D) E001



- FE, 5" PVC SCH 40 Conduit With Pullstring
- FE, 5" RGS Conduit With Pullstring
- MISC, Concrete Pad (For Transformer)
- FE, (5) 5" PVC SCH 40 Conduit With Pullstring
- FE, (5) 5" RGS Conduit With Pullstring
- DEMO, Existing Abandoned Cabinets To Be Removed
- DEMO, Existing All Electrical Equipment Feeding 600A Chiller/Boiler Equipment To Be Removed
- FE, 4#4/0, #2, 2-1/2" EMT Conduit
- FE, 4#3/0, #3, 2-1/2" EMT Conduit
- FE, 4#3/0, #3, 2-1/2" PVC SCH 40 Conduit
- FE, 4#3/0, #3, 2-1/2" RGS Conduit
- FE, 4#1/0, #4, 2-1/2" PVC SCH 40 Conduit
- FE, 4#1/0, #4, 2-1/2" RGS Conduit
- MISC, Trenching

- 104.5 FT
- 5.0 FT
- 1.0 EA
- 120.9 FT
- 10.0 FT
- 1.0 EA
- 1.0 EA
- 1.0 EA
- 162.1 FT
- 153.3 FT
- 93.3 FT
- 12.0 FT
- 82.3 FT
- 12.0 FT
- 338.9 FT

IDENTIFICATION STAMP  
 DIV. OF THE STATE ARCHITECT  
 APP: 03-122671 INC.  
 REVIEWED FOR  
 SS [ ] PLS [ ] ACS [ ]  
 DATE: 11/08/2023



3434 Truxton Avenue, Suite 240  
 Bakersfield, California, 93301  
 Tel: 805.327.1930 Fax: 805.327.7204  
 web: www.aparchitects.net

**CAMPUS HVAC SYSTEM UPGRADE**

Horace Mann Elementary School  
 2710 Nile St, Bakersfield, CA, 93306  
 Bakersfield City School District

ARCHITECT



JAMES PATRICK FOGARTY, AIA  
 ARCHITECT C-19670

CONSULTANT



**PROJECT INFO**

Project No.	588-0016
Date	11/03/23
DSA File No.	1548
DSA No.	03-122671

**REVISIONS**

No.	Date	Item

THESE DRAWINGS ARE INSTRUMENTS OF SERVICE AND ARE THE PROPERTY OF AP ARCHITECTS. ALL DESIGN AND CONSTRUCTION SHALL BE IN ACCORDANCE WITH THE PROJECT AND SHALL NOT BE USED FOR ANY OTHER PROJECT WITHOUT THE EXPRESS WRITTEN PERMISSION OF AP ARCHITECTS. WRITTEN SHALL HAVE PRECEDENCE OVER VERBAL. CONTRACTORS SHALL VERIFY AND BE RESPONSIBLE FOR ALL DIMENSIONS AND CONDITIONS SHOWN BY THESE DRAWINGS. SHOP DETAILS SHALL BE SUBMITTED TO THIS OFFICE FOR APPROVAL BEFORE PROCEEDING WITH FABRICATION. © COPYRIGHT

ELECTRICAL SITE PLAN

**E1.00**

ELECTRICAL SITE PLAN

SCALE: 1/16" = 1'-0"  
 NORTH

- FE, 2#4, #8, 1-1/4" EMT Conduit
- MISC, Junction Box
- PW, 3#12, 3/4" EMT Conduit
- MISC, Junction Box With Blank Cover
- MISC, Junction Box With Blank Cover

- 19.9 FT
- 2.0 EA
- 74.3 FT
- 2.0 EA
- 6.0 EA



- ELECTRICAL NOTES**
- ◇ UNIT VENTILATORS TO BE REMOVED. NEW JUNCTION BOX WITH BLANK COVER TO BE INSTALLED ON EXISTING CONDUIT
  - ◇ CONNECT POWER ASSISTED DOOR CIRCUIT TO BE RAN IN SURFACE MOUNTED NIREHOLD. SEE DETAIL 16 ON ARCHITECTURAL SHEET 0.005 FOR CONTROL DIAGRAM
  - ◇ AT WALLS TO BE REMOVED, DEMO ALL EXISTING DEVICES, CONDUIT, CONDUCTOR, AND CABLE TO PANEL
  - ◇ SEE TYPICAL CLASSROOM DETAIL SEE

IDENTIFICATION STAMP  
 DIV. OF THE STATE ARCHITECT  
 APP: 03-122671 INC.  
 REVIEWED FOR  
 SS  PLS  ACS   
 DATE: 11/08/2023

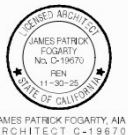


3434 Truxtun Avenue, Suite 240  
 Bakersfield, California, 93301  
 tel|861.327.1890 fax|861.327.7204  
 web|www.aparchitects.net

**CAMPUS HVAC SYSTEM UPGRADE**

**Horace Mann Elementary School**  
 2710 Niles St, Bakersfield, CA, 93306  
 Bakersfield City School District

ARCHITECT



JAMES PATRICK FOGARTY, AIA  
 ARCHITECT C-19670

CONSULTANT



**PROJECT INFO**

Project No.	586-0016
Date	11/03/23
DSA File No.	1546
DSA No.	03-122671

**REVISIONS**

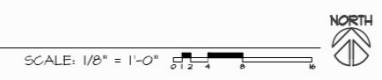
No.	Date	Item

THESE DRAWINGS ARE INSTRUMENTS OF SERVICE AND ARE THE PROPERTY OF AP ARCHITECTS. ALL DESIGN AND DRAWINGS ARE FOR THE USE ON THE SPECIFIC PROJECT AND SHALL NOT BE USED OTHERWISE WITHOUT THE EXPRESS WRITTEN PERMISSION OF AP ARCHITECTS. WRITTEN SHALL HAVE PRECEDENCE OVER BOLD OR SHOWN. CONTRACTORS SHALL VERIFY AND BE RESPONSIBLE FOR ALL DIMENSIONS AND CONDITIONS SHOWN BY THESE DRAWINGS. SHOP DETAILS SHALL BE SUBMITTED TO THIS OFFICE FOR APPROVAL, BEFORE PROCEEDING WITH FABRICATION. © 2023

**BUILDING M-1 AND M-2 ELECTRICAL PLANS**

**E2.20**

BUILDING M-1 AND M-2 ELECTRICAL PLAN



IDENTIFICATION STAMP  
 DIV. OF THE STATE ARCHITECT  
 APP: 03-122671 INC.  
 REVIEWED FOR  
 SS  PLS  ACS   
 DATE: 11/08/2023

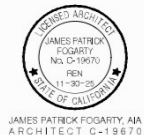


3434 Truxtun Avenue, Suite 240  
 Bakersfield, California, 93301  
 tel|861.327.1890 fax|861.327.7204  
 web|www.aparchitects.net

**CAMPUS HVAC  
 SYSTEM UPGRADE**

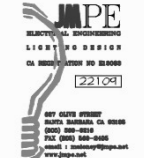
**Horace Mann  
 Elementary School**  
 2715 Niles St, Bakersfield, CA, 93306  
 Bakersfield City School District

ARCHITECT



JAMES PATRICK FOGARTY, M.A.  
 ARCHITECT G-19670

CONSULTANT



**PROJECT INFO**

Project No.	588-0016
Date	10/31/23
DSA File No.	1548
DSA No.	03-122671

**REVISIONS**

No.	Date	Item

THESE DRAWINGS ARE INSTRUMENTS OF SERVICE AND ARE THE PROPERTY OF AP ARCHITECTS. ALL DESIGN AND DRAWINGS ARE FOR THE USE ON THE SPECIFIC PROJECT AND SHALL NOT BE USED ON OTHER PROJECTS WITHOUT THE EXPRESS WRITTEN PERMISSION OF AP ARCHITECTS. WRITTEN SHALL HAVE PRECEDENCE OVER REPRODUCED. CONTRACTORS SHALL VERIFY AND BE RESPONSIBLE FOR ALL DIMENSIONS AND CONDITIONS SHOWN BY THESE DRAWINGS. SHOP DETAILS SHALL BE SUBMITTED TO THIS OFFICE FOR APPROVAL, BEFORE PROCEEDING WITH FABRICATION. © 2023 AP ARCHITECTS

**BUILDING M-3 ELECTRICAL  
 PLAN**

**E2.21**

● MISC, Junction Box With Blank Cover  
 ■ RELO, Existing Switches & Outlets To Be Relocated & Reconnect With Existing Circuit In This Area

10.0 EA ●  
 208.4 SQ FT ■

- ELECTRICAL NOTES**
- ◇ UNIT VENTILATORS TO BE REMOVED. NEW JUNCTION BOX WITH BLANK COVER TO BE INSTALLED ON (E) CONDUIT
  - ◇ ON WALLS TO BE REMOVED, DEMO ALL DEVICES, CONDUIT, CONDUCTOR, AND CABLE TO PANEL.
  - ◇ SEE TYPICAL CLASSROOM DETAIL
  - ◇ ON WALLS TO BE RELOCATED, RELOCATE SWITCHES AND OUTLETS, RECONNECT TO EXISTING CIRCUIT.



BUILDING M-3 ELECTRICAL PLAN

SCALE: 1/8" = 1'-0"



IDENTIFICATION STAMP  
 DIV. OF THE STATE ARCHITECT  
 APP: 03-122671 INC.  
 REVIEWED FOR  
 SS  PLS  ACS   
 DATE: 11/08/2023

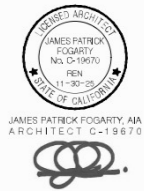


3434 Truxtun Avenue, Suite 240  
 Bakersfield, California, 93301  
 tel|861.327.1890 fax|861.327.7204  
 web|www.aparchitects.net

CAMPUS HVAC  
 SYSTEM UPGRADE

Horace Mann  
 Elementary School  
 2710 Niles St, Bakersfield, CA, 93306  
 Bakersfield City School District

ARCHITECT



CONSULTANT



PROJECT INFO

Project No.	588-0016
Date	11/01/23
DSA File No.	1548
DSA No.	03-122671

REVISIONS

No.	Date	Item

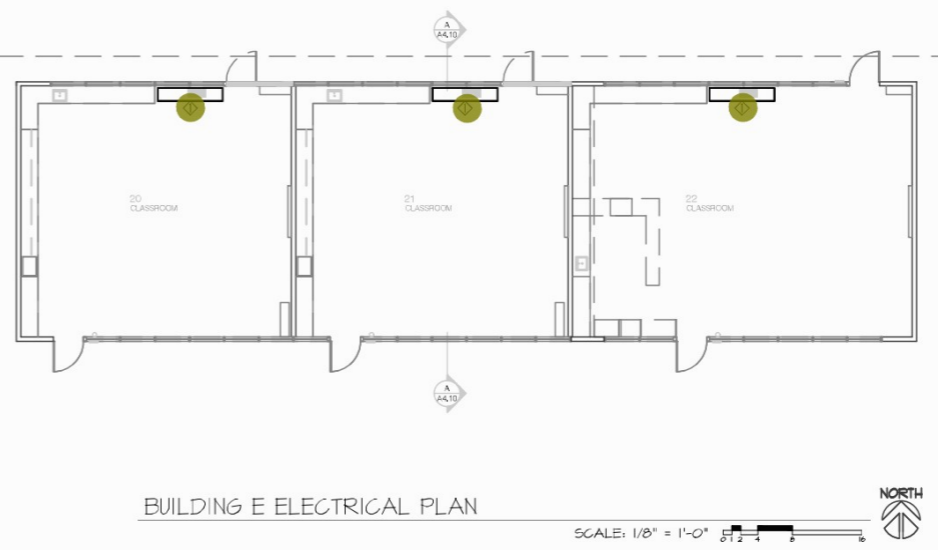
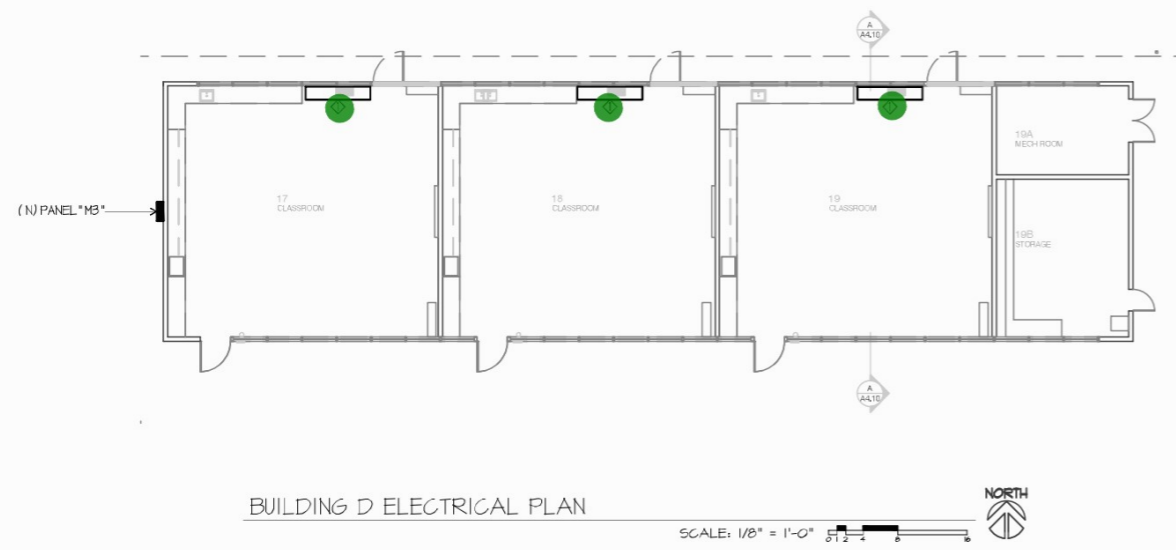
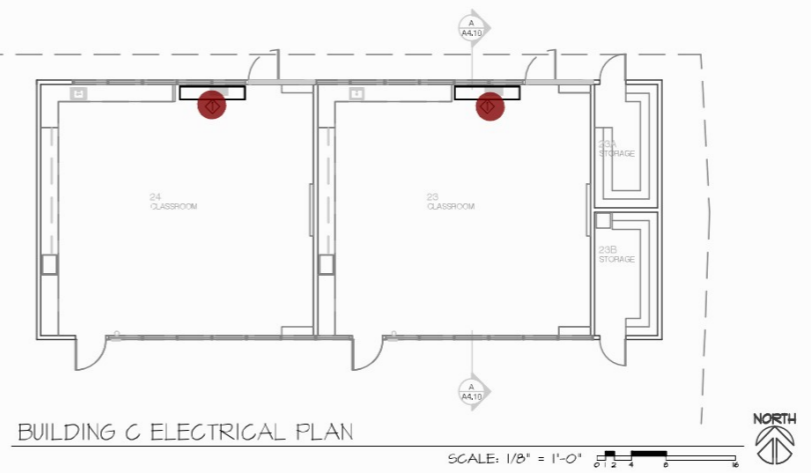
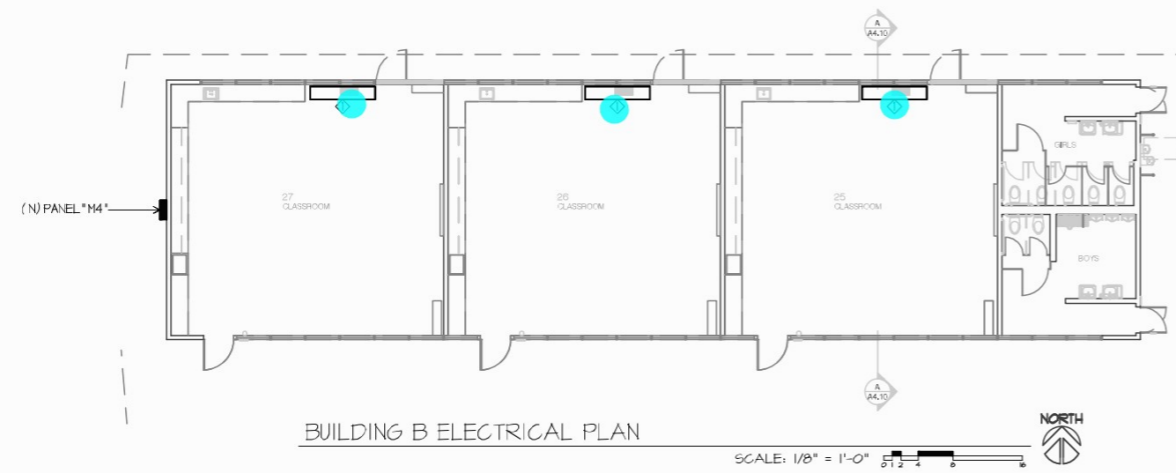
THESE DRAWINGS ARE INSTRUMENTS OF SERVICE AND ARE THE PROPERTY OF AP ARCHITECTS. ALL DESIGN AND DRAWINGS ARE FOR THE USE ON THE SPECIFIC PROJECT AND SHALL NOT BE USED ON OTHER PROJECTS WITHOUT THE EXPRESS WRITTEN PERMISSION OF AP ARCHITECTS. WRITTEN SHALL HAVE PRECEDENCE OVER ORAL. ENGINEERS CONTRACTORS SHALL VERIFY AND BE RESPONSIBLE FOR ALL DIMENSIONS AND CONDITIONS SHOWN BY THESE DRAWINGS. SHOP DETAILS SHALL BE SUBMITTED TO THIS OFFICE FOR APPROVAL BEFORE PROCEEDING WITH FABRICATION. © COPYRIGHT

BUILDINGS B-E ELECTRICAL PLANS

E2.22

- MISC, Junction Box With Blank Cover 3.0 EA
- MISC, Junction Box With Blank Cover 2.0 EA
- MISC, Junction Box With Blank Cover 3.0 EA
- MISC, Junction Box With Blank Cover 3.0 EA

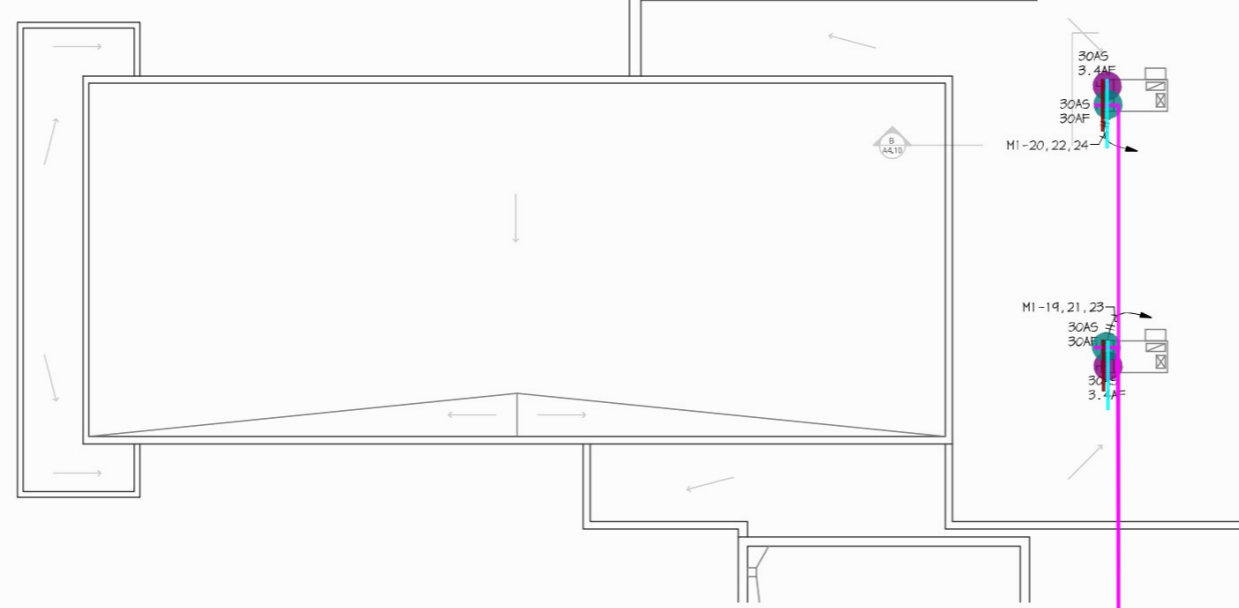
ELECTRICAL NOTES  
 UNIT VENTILATORS TO BE REMOVED. NEW JUNCTION BOX WITH BLANK COVER TO BE INSTALLED ON EXISTING CONDUIT



- DS, 30AS/3.4AF/3P Fused Disconnect Switch, NEMA 3R
- DS, 30AS/30AF/3P Fused Disconnect Switch, NEMA 3R
- DS, 30AS/3.4AF/3P Fused Disconnect Switch, NEMA 3R
- DS, 30AS/30AF/3P Fused Disconnect Switch, NEMA 3R
- ⌚ PW, 4#10, 3/4" EMT Conduit
- ⌚ PW, 4#10, 3/4" RGS Conduit
- ⌚ PW, 4#10, 3/4" LFMC Conduit
- ⌚ PW, 4#10, 3/4" EMT Conduit
- ⌚ PW, 4#10, 3/4" RGS Conduit
- ⌚ PW, 4#10, 3/4" LFMC Conduit

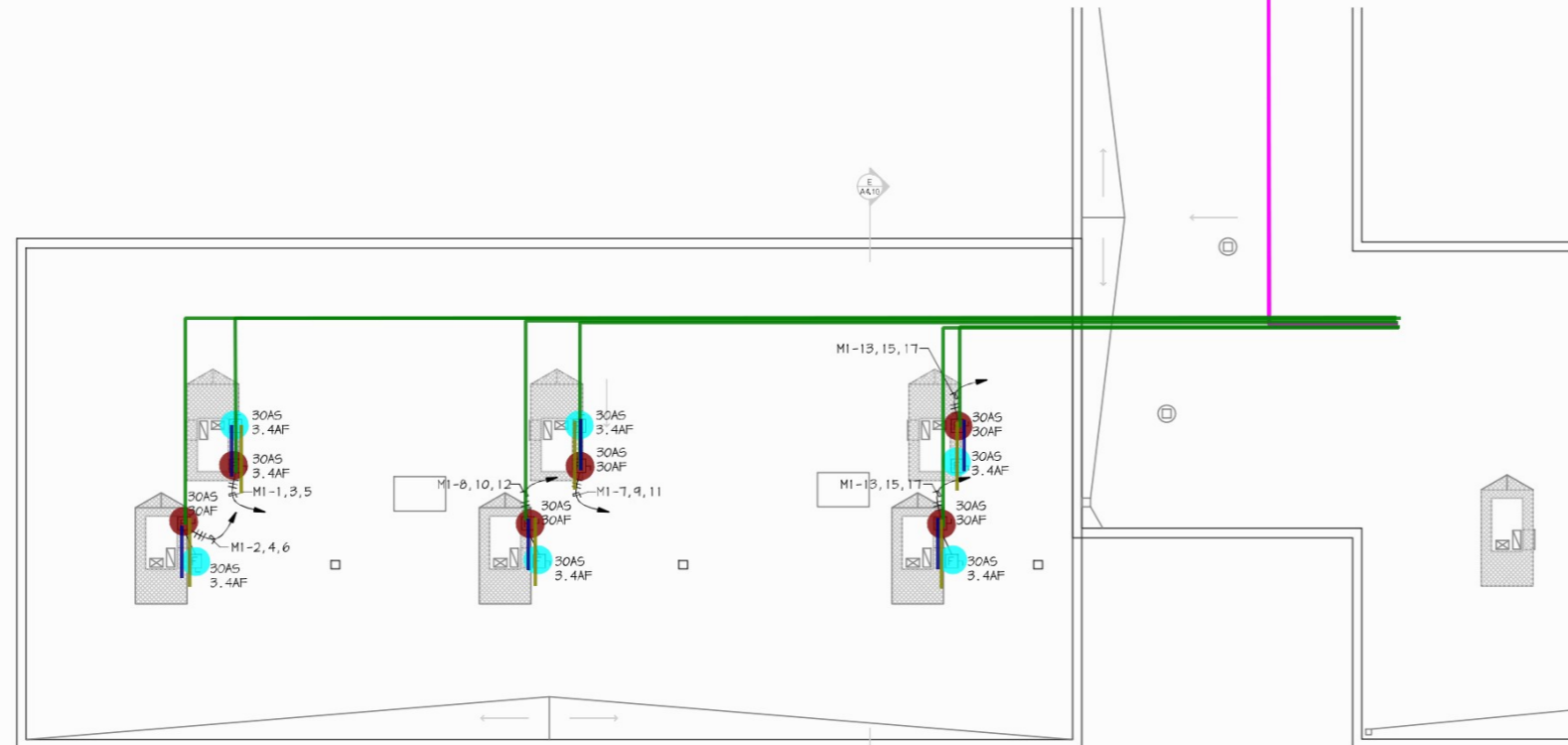
- 6.0 EA ●
- 6.0 EA ●
- 2.0 EA ●
- 2.0 EA ●
- 230.8 FT —
- 16.0 FT —
- 12.0 FT —
- 691.6 FT —
- 48.0 FT —
- 36.0 FT —

**ELECTRICAL NOTES**  
 ⚡ ALL ROOF PENETRATIONS SHALL BE SEALED WATER TIGHT  
 ⚡ COORDINATE EXACT EQUIPMENT LOCATION WITH INSTALLER.



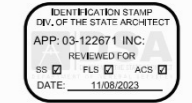
BUILDING M-1 ELECTRICAL ROOF PLAN

SCALE: 1/8" = 1'-0"



BUILDING M-2 ELECTRICAL ROOF PLAN

SCALE: 1/8" = 1'-0"

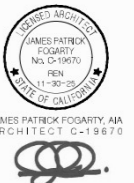


3434 Truxton Avenue, Suite 240  
 Bakersfield, California, 93301  
 Tel: 805.327.1930 Fax: 805.327.7204  
 web: www.aparchitects.net

**CAMPUS HVAC SYSTEM UPGRADE**

**Horace Mann Elementary School**  
 2710 Niles St, Bakersfield, CA, 93306  
 Bakersfield City School District

ARCHITECT



CONSULTANT



**PROJECT INFO**

Project No.	588-0016
Date	11/3/23
DSA File No.	156
DSA No.	03-122671

**REVISIONS**

No.	Date	Item

THESE DRAWINGS ARE INSTRUMENTS OF SERVICE AND ARE THE PROPERTY OF AP ARCHITECTS. ALL DESIGN AND DRAWING ARE FOR THE USE ON THE SPECIFIC PROJECT AND SHALL NOT BE USED OTHERWISE WITHOUT THE EXPRESS WRITTEN PERMISSION OF AP ARCHITECTS. WRITTEN SHALL HAVE PRECEDENCE OVER ROUGH OR VERBAL. CONTRACTORS SHALL VERIFY AND BE RESPONSIBLE FOR ALL DIMENSIONS AND CONDITIONS SHOWN BY THESE DRAWINGS. SHOP DETAILS SHALL BE SUBMITTED TO THIS OFFICE FOR APPROVAL BEFORE PROCEEDING WITH FABRICATION.

BUILDING M-1 AND M-2 ELECTRICAL ROOF PLANS

**E3.20**

- DS, 30AS/3.4AF/3P Fused Disconnect Switch, NEMA 3R
- DS, 30AS/6.3AF/3P Fused Disconnect Switch, NEMA 3R
- DS, 30AS/25AF/3P Fused Disconnect Switch, NEMA 3R
- DS, 30AS/30AF/3P Fused Disconnect Switch, NEMA 3R
- DS, 60AS/30AF/3P Fused Disconnect Switch, NEMA 3R
- DS, 60AS/45AF/2P Fused Disconnect Switch, NEMA 3R
- ↳ PW, 4#10, 3/4" EMT Conduit
- ↳ PW, 4#10, 3/4" RGS Conduit
- ↳ PW, 4#10, 3/4" LFMC Conduit
- ↳ PW, 2#8, #10, 3/4" EMT Conduit
- ↳ PW, 2#8, #10, 3/4" RGS Conduit
- ↳ PW, 2#8, #10, 3/4" LFMC Conduit

- 6.0 EA
- 2.0 EA
- 2.0 EA
- 5.0 EA
- 1.0 EA
- 2.0 EA
- 1255.9 FT
- 64.0 FT
- 48.0 FT
- 279.2 FT
- 8.0 FT
- 8.0 FT

**ELECTRICAL NOTES**  
 ⬠ ALL ROOF PENETRATIONS SHALL BE SEALED WATER TIGHT  
 ⬠ COORDINATE EXACT EQUIPMENT LOCATION WITH INSTALLER.

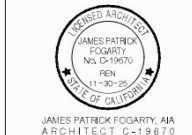


3434 Truxton Avenue, Suite 240  
 Bakersfield, California, 93301  
 Tel: 805.327.1990 Fax: 805.327.7204  
 Web: www.aparchitects.net

**CAMPUS HVAC SYSTEM UPGRADE**

**Horace Mann Elementary School**  
 2710 Niles St, Bakersfield, CA, 93309  
 Bakersfield City School District

ARCHITECT



JAMES PATRICK FOGARTY, AIA  
 ARCHITECT C-19670

CONSULTANT



**PROJECT INFO**

Project No.	586-016
Date	11/03/23
DSA File No.	15-6
DSA No.	03-122671

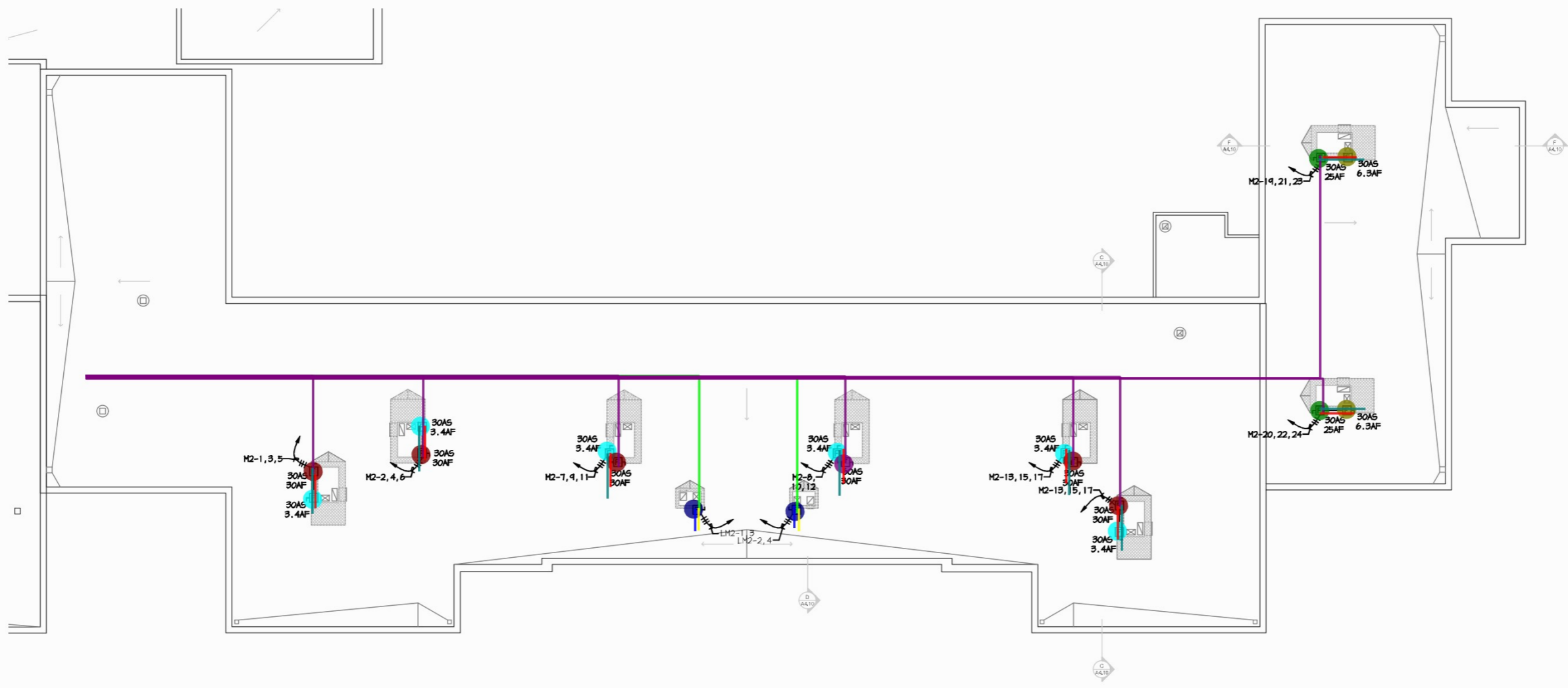
**REVISIONS**

No.	Date	Item

THESE DRAWINGS ARE INSTRUMENTS OF SERVICE AND ARE THE PROPERTY OF AP ARCHITECTS. ALL DESIGN AND ORDINANCES ARE FOR THE USE ON THE SPECIFIC PROJECT AND SHALL NOT BE USED ON OTHER PROJECTS WITHOUT THE EXPRESS WRITTEN PERMISSION OF AP ARCHITECTS. WRITTEN SHALL HAVE PRECEDENCE OVER BOLD OR SHOWN CONTRACTORS SHALL VERIFY AND BE RESPONSIBLE FOR ALL DIMENSIONS AND CONDITIONS SHOWN BY THESE DRAWINGS. SHOP DETAILS SHALL BE SUBMITTED TO THIS OFFICE FOR APPROVAL BEFORE PROCEEDING WITH FABRICATION.

**BUILDING M-3 ELECTRICAL ROOF PLAN**

**E3.21**



BUILDING M-3 ELECTRICAL ROOF PLAN

SCALE: 1/8" = 1'-0"

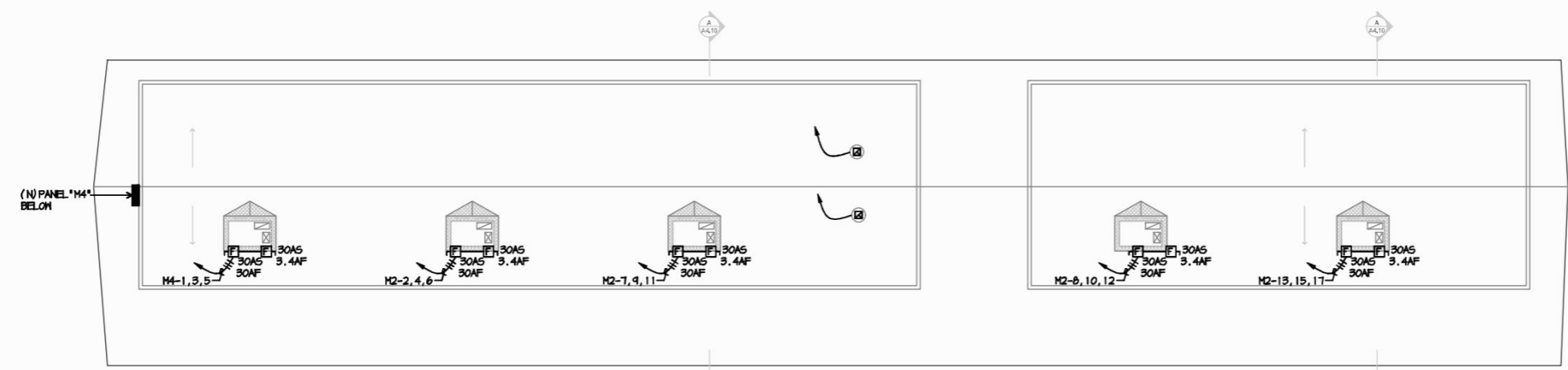




- DS, 30AS/3.4AF/3P Fused Disconnect Switch, NEMA 3R
- DS, 30AS/3.4AF/3P Fused Disconnect Switch, NEMA 3R
- DS, 30AS/30AF/3P Fused Disconnect Switch, NEMA 3R
- DS, 30AS/30AF/3P Fused Disconnect Switch, NEMA 3R
- ┌ PW, 4#10, 3/4" EMT Conduit
- ┌ PW, 4#10, 3/4" RGS Conduit
- ┌ PW, 4#10, 3/4" LFMC Conduit
- ┌ PW, 4#10, 3/4" EMT Conduit
- ┌ PW, 4#10, 3/4" RGS Conduit
- ┌ PW, 4#10, 3/4" LFMC Conduit
- ┌ PW, 4#10, 3/4" LFMC Conduit
- ┌ PW, 4#10, 3/4" PVC SCH 40 Conduit
- ┌ MISC, Trenching

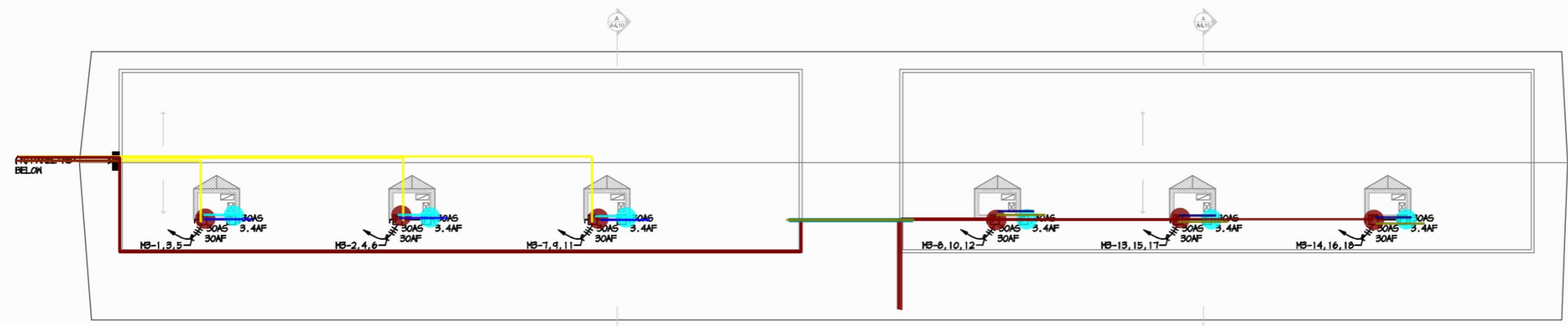
- 3.0 EA ●
- 3.0 EA ●
- 3.0 EA ●
- 3.0 EA ●
- 216.5 FT
- 24.0 FT
- 18.0 FT
- 627.7 FT
- 24.0 FT
- 18.0 FT
- 40.7 FT
- 20.9 FT

**ELECTRICAL NOTES**  
 ◆ ALL ROOF PENETRATIONS SHALL BE SEALED WATER TIGHT  
 ◆ COORDINATE EXACT EQUIPMENT LOCATION WITH INSTALLER.



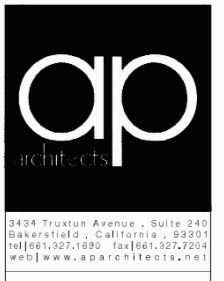
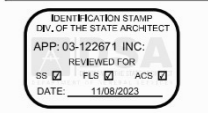
BUILDING B ELECTRICAL ROOF PLAN  
 SCALE: 1/8" = 1'-0"

BUILDING C ELECTRICAL ROOF PLAN  
 SCALE: 1/8" = 1'-0"



BUILDING D ELECTRICAL ROOF PLAN  
 SCALE: 1/8" = 1'-0"

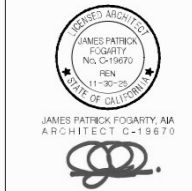
BUILDING E ELECTRICAL ROOF PLAN  
 SCALE: 1/8" = 1'-0"



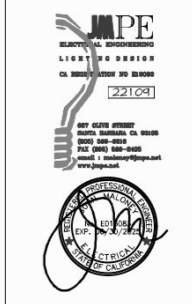
**CAMPUS HVAC SYSTEM UPGRADE**

**Horace Mann Elementary School**  
 2710 Niles St, Bakersfield, CA, 93306  
 Bakersfield City School District

ARCHITECT



CONSULTANT



**PROJECT INFO**

Project No:	566-0016
Date:	11/03/23
DSA File No:	156
DSA No:	03-122671

**REVISIONS**

No.	Date	Item

THESE DRAWINGS ARE INSTRUMENTS OF SERVICE AND ARE THE PROPERTY OF AP ARCHITECTS. ALL DESIGN AND DRAWINGS ARE FOR THE USE ON THE SPECIFIC PROJECT AND SHALL NOT BE USED OTHERWISE WITHOUT THE EXPRESSED WRITTEN PERMISSION OF AP ARCHITECTS. WRITTEN SHALL HAVE PRECEDENCE OVER BOLD DRAWING. CONTRACTORS SHALL VERIFY AND BE RESPONSIBLE FOR ALL DIMENSIONS AND CONDITIONS SHOWN BY THESE DRAWINGS. SHOP DETAILS SHALL BE SUBMITTED TO THIS OFFICE FOR APPROVAL BEFORE PROCEEDING WITH FABRICATION. © COPYRIGHT

BUILDING B-E ELECTRICAL ROOF PLANS

**E3.22**

- P, Exhaust Fan Connection
- DS, 60AS/40AF/3P Fused Disconnect Switch, NEMA 3R
- DS, 60AS/40AF/3P Fused Disconnect Switch, NEMA 3R
- ↳ PW, 3#8, #10, 3/4" EMT Conduit
- ↳ PW, 3#8, #10, 3/4" RGS Conduit
- ↳ PW, 3#8, #10, 3/4" LFMC Conduit
- ↳ PW, 3#10, 3/4" RGS Conduit
- ↳ PW, 3#10, 3/4" LFMC Conduit
- ↳ PW, 3#8, #10, 3/4" RGS Conduit
- ↳ PW, 3#8, #10, 3/4" LFMC Conduit
- ↳ PW, 3#8, #10, 3/4" EMT Conduit
- ↳ PW, 3#8, #10, 3/4" PVC SCH 40 Conduit
- ↳ MISC, Trenching

- 2.0 EA
- 6.0 EA
- 4.0 EA
- 209.9 FT
- 24.0 FT
- 18.0 FT
- 259.6 FT
- 12.0 FT
- 16.0 FT
- 12.0 FT
- 394.7 FT
- 40.8 FT
- 20.5 FT



3434 Truxtun Avenue, Suite 240  
Bakersfield, California, 93301  
tel | 805.327.1930 fax | 805.327.7204  
web | www.aparchitects.net

CAMPUS HVAC SYSTEM UPGRADE

Horace Mann Elementary School  
2710 Niles St, Bakersfield, CA, 93309  
Bakersfield City School District

ARCHITECT



JAMES PATRICK FOGARTY, AIA  
ARCHITECT C-1-19670

CONSULTANT



PROJECT INFO

Project No.	588-0016
Date	11/01/23
DSA File No.	1548
DSA No.	03-122671

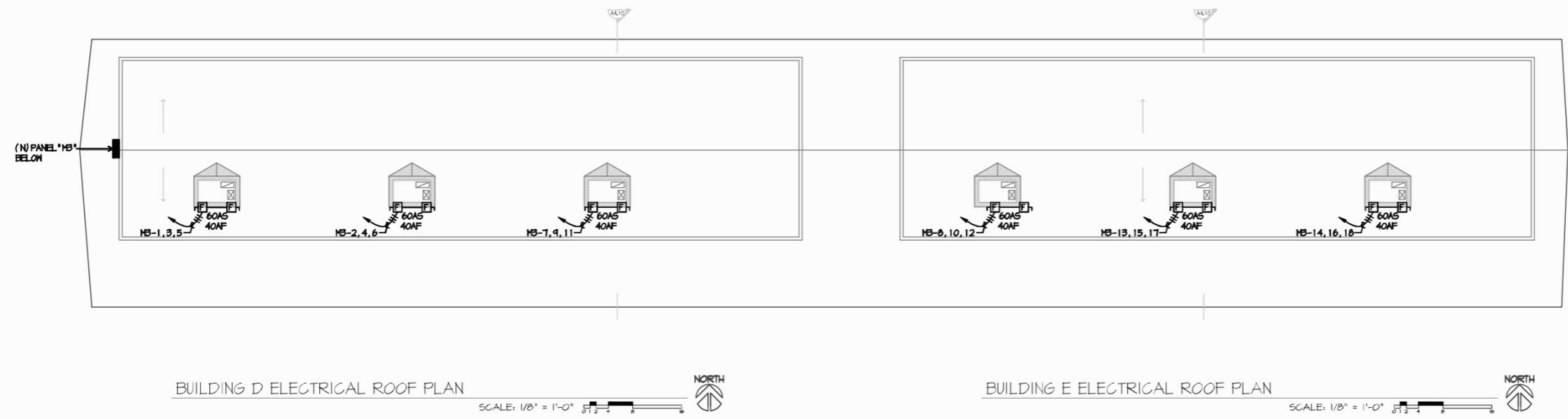
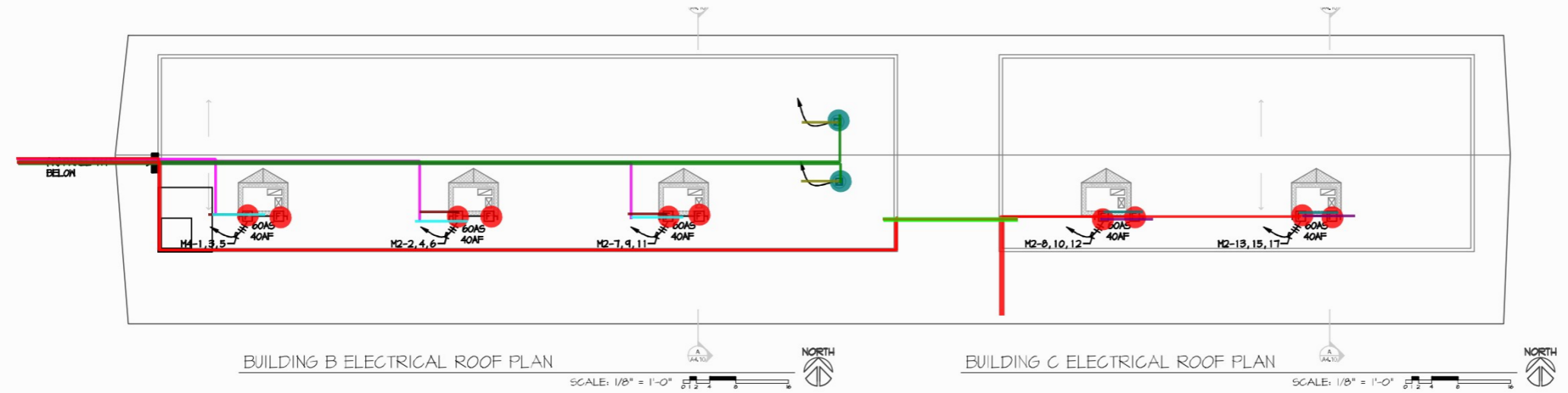
REVISIONS

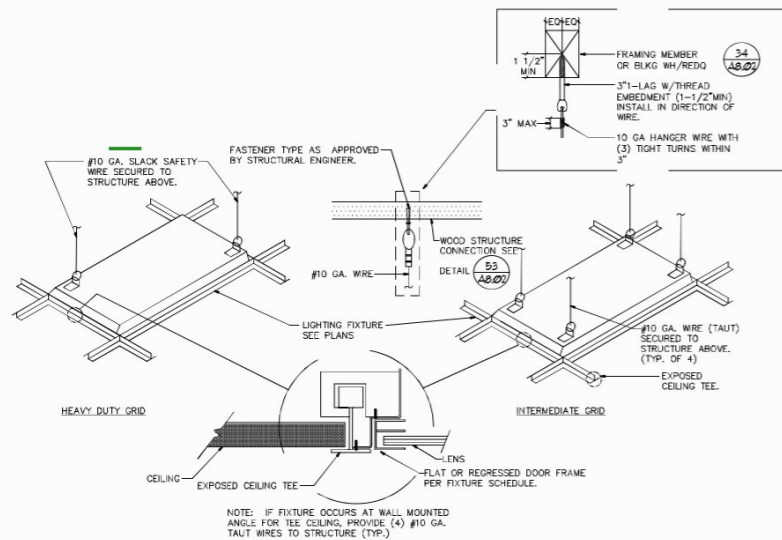
No.	Date	Item

THESE DRAWINGS ARE INSTRUMENTS OF SERVICE AND ARE THE PROPERTY OF AP ARCHITECTS. ALL DESIGN AND DRAWINGS ARE FOR THE USE ON THE SPECIFIC PROJECT AND SHALL NOT BE USED ON OTHER PROJECTS WITHOUT THE EXPRESS WRITTEN PERMISSION OF AP ARCHITECTS. WRITTEN SHALL HAVE PRECEDENCE OVER ISOLATED DIMENSIONS. CONTRACTORS SHALL VERIFY AND BE RESPONSIBLE FOR ALL DIMENSIONS AND CONDITIONS SHOWN BY THESE DRAWINGS. SHOP DETAILS SHALL BE SUBMITTED TO THIS OFFICE FOR APPROVAL BEFORE PROCEEDING WITH FABRICATION. © COPYRIGHT

BUILDING B-E ELECTRICAL ROOF PLAN

E3.23





LIGHT FIXTURE SUPPORT DETAIL  
SCALE: NONE

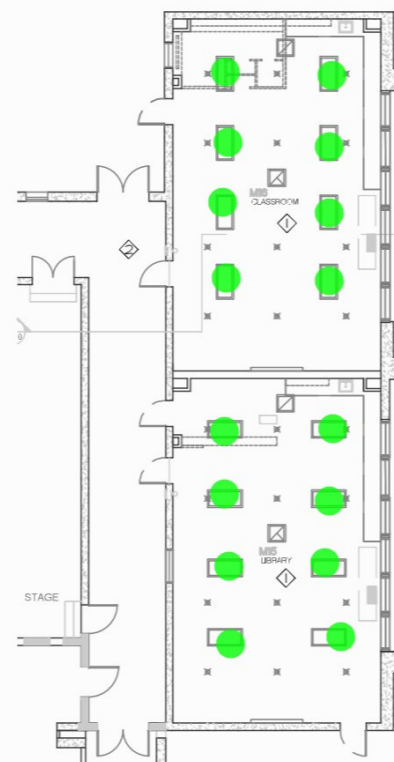
- 318 ●
- 13 ●
- 7 ●
- 11 ●

LED FIXTURE SCHEDULE							
TYPE	MANUFACTURER AND CATALOG NUMBER	LED MODULE			DRIVER	OPTIC/LENS	REMARKS
		TYPE	COLOR TEMP	WATTS			
A 43	LITHONIA SPX 2X4 6000LM 80CRI 35K BFR MPL MIN10 ZT MVOLT MW		3500K	43	0-10V 10%	DIFFUSE	2X4 LED
B 34	LITHONIA FMLWL 848		4000K	34	0-10V	DIFFUSE	4 FT S/M WRAP
E 1	ISOLITE DTH SWW UN		GREEN	1	ELV	GREEN	DUAL TECH
EM 6	ISOLITE BU 6 WH		4000K	6	NICAD BATTERY	PRISMATIC	EM LIGHT WITH 90 MIN BATTERY BACKUP POWER

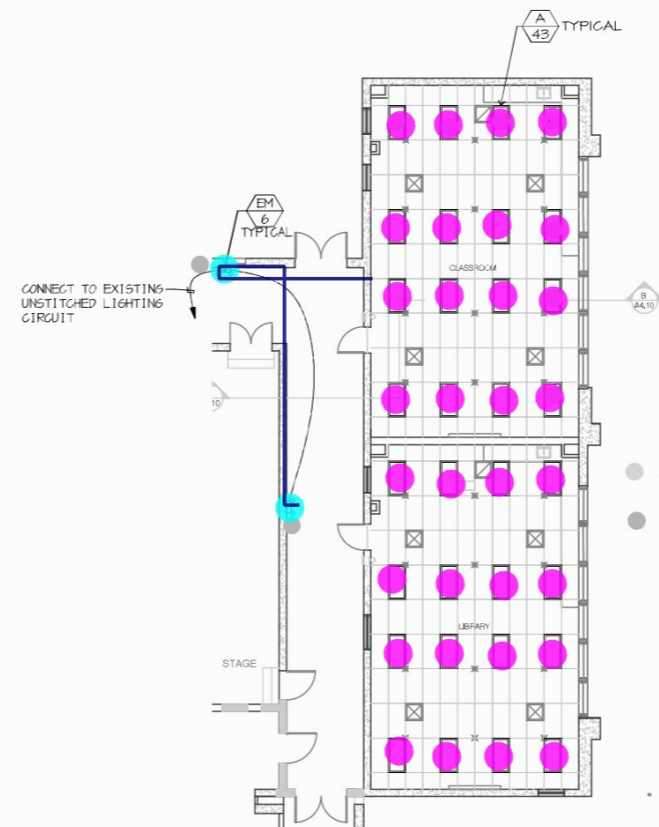
■ #10 GA. Slack Safety Wire (For Troffer Light Support)	164.9 FT
● LF, A/43	32.0 EA
● LF, EM/6	2.0 EA
■ LWB, 3#12, 3/4" EMT	55.2 FT
● Remove Existing 2x4 Troffer Light Fixture	16.0 EA
■ Remove Existing Lighting Fixture in This Area	0.0 SQ FT

LIGHTING DEMOLITION PLAN

- ◇ REMOVE LIGHTING COMPLETE
- ⊕ EXISTING LIGHTING TO REMAIN IN THIS SPACE



DEMOLITION LIGHTING PLAN - BUILDING M-1  
SCALE: 1/8" = 1'-0" 0 1 2 3 4



LIGHTING PLAN - BUILDING M-1  
SCALE: 1/8" = 1'-0" 0 1 2 3 4

- LIGHTING NOTES
- CONNECT NEW LIGHTS TO EXISTING CIRCUIT + CONTROL
  - SUPPORT LIGHT FIXTURES PER **A 43** TYPICAL
  - REMOVE AND REINSTALL EXISTING UV FILTERS

IDENTIFICATION STAMP  
DIV. OF THE STATE ARCHITECT  
APP: 03-122671 INC.  
REVIEWED FOR  
SS [ ] PLS [ ] ACS [ ]  
DATE: 11/08/2023



3434 Truxtun Avenue, Suite 240  
Bakersfield, California, 93301  
tel|861.327.1690 fax|661.327.7204  
web|www.aparchitects.net

CAMPUS HVAC  
SYSTEM UPGRADE

Horace Mann  
Elementary School  
2710 Niles St, Bakersfield, CA, 93306  
Bakersfield City School District

ARCHITECT



JAMES PATRICK FOGARTY, AIA  
ARCHITECT C-19670

CONSULTANT



PROJECT INFO

Project No.	588-0016
Date	11/03/23
DSA File No.	1548
DSA No.	03-122671

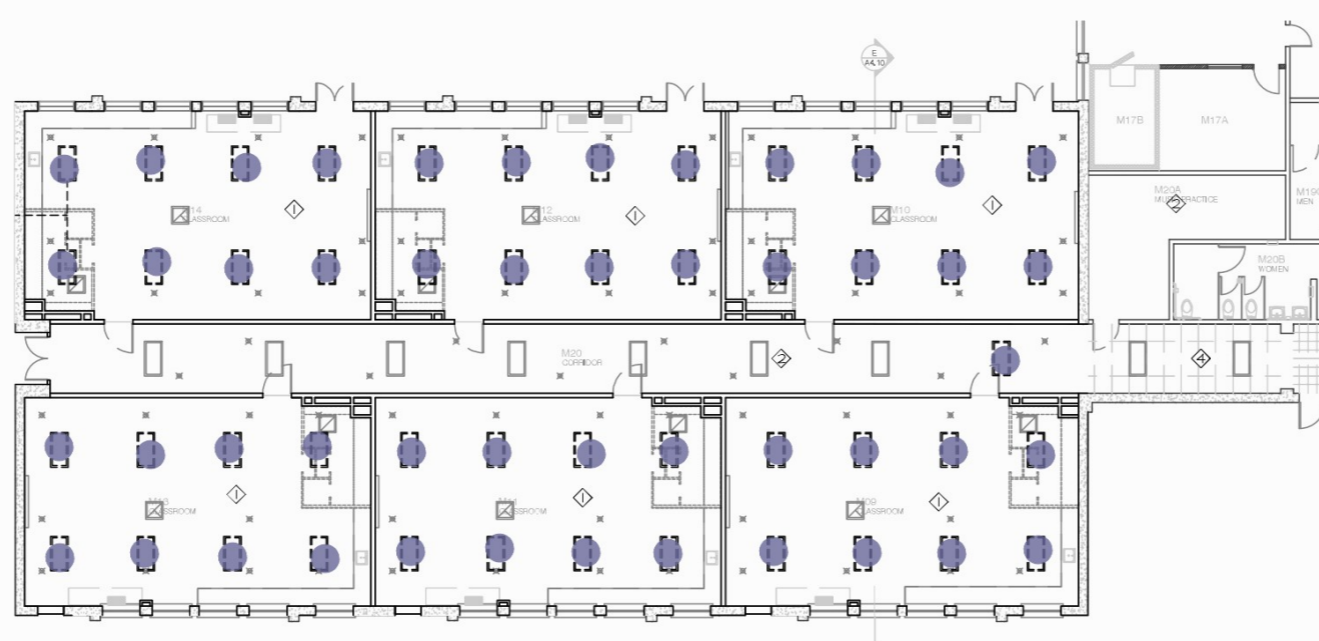
REVISIONS

No.	Date	Item

THESE DRAWINGS ARE INSTRUMENTS OF SERVICE AND ARE THE PROPERTY OF AP ARCHITECTS. ALL DESIGN AND DRAWINGS ARE FOR THE USE ON THE SPECIFIC PROJECT AND SHALL NOT BE USED ON OTHER PROJECTS WITHOUT THE EXPRESS WRITTEN PERMISSION OF AP ARCHITECTS. WRITTEN SHALL HAVE PRECEDENCE OVER ORAL. ENGINEERING CONTRACTORS SHALL VERIFY AND BE RESPONSIBLE FOR ALL DIMENSIONS AND CONDITIONS SHOWN BY THESE DRAWINGS. SHOP DETAILS SHALL BE SUBMITTED TO THIS OFFICE FOR APPROVAL, BEFORE PROCEEDING WITH FABRICATION.

BUILDING M1 DEMOLITION  
AND LIGHTING PLAN

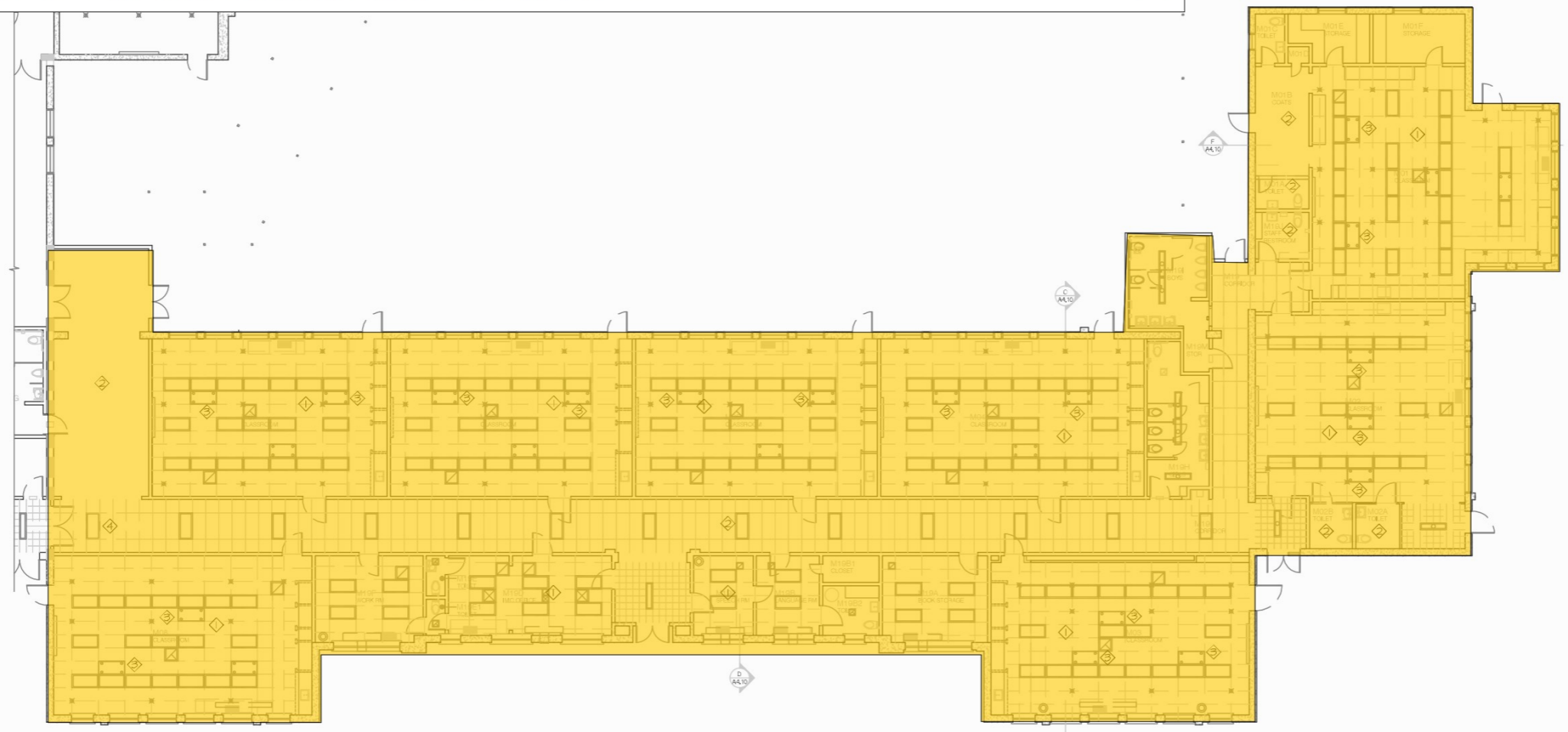
E5.00



- LIGHTING DEMOLITION PLAN**
- ◇ REMOVE LIGHTING COMPLETE
  - ◇ EXISTING LIGHTING TO REMAIN IN THIS SPACE
  - ◇ REMOVE/REINSTALL EX UV FILTERS
  - ◇ EXISTING LIGHTING TO REMAIN IN THIS SPACE, COORDINATE WITH MECH FOR REMOVAL OF HYDRONIC PIPING

DEMOLITION LIGHTING PLAN - BUILDING M-2  
 SCALE: 1/8" = 1'-0"

Remove Existing 2x4 Troffer Light Fixture **49.0 EA**  
 Remove Existing Lighting Fixture in This Area **12772.7 SQ FT**



DEMOLITION LIGHTING PLAN - BUILDING M-3  
 SCALE: 1/8" = 1'-0"

IDENTIFICATION STAMP  
 DIV. OF THE STATE ARCHITECT  
 APP: 03-122671 INC.  
 REVIEWED FOR  
 SS  PLS  ACS   
 DATE: 11/08/2023

**ap**  
 architects

3434 Truxtun Avenue, Suite 240  
 Bakersfield, California, 93301  
 tel|661.327.1690 fax|661.327.7204  
 web|www.aparchitects.net

**CAMPUS HVAC  
 SYSTEM UPGRADE**

**Horace Mann  
 Elementary School**  
 2710 Niles St, Bakersfield, CA, 93306  
 Bakersfield City School District

ARCHITECT



JAMES PATRICK FOGARTY, AIA  
 ARCHITECT C-19670

CONSULTANT



**PROJECT INFO**

Project No.	586-0016
Date	11/01/23
DSA File No.	156
DSA No.	03-122671

**REVISIONS**

No.	Date	Item

THESE DRAWINGS ARE INSTRUMENTS OF SERVICE AND ARE THE PROPERTY OF AP ARCHITECTS. ALL DESIGN AND DRAWINGS ARE FOR THE USE ON THE SPECIFIC PROJECT AND SHALL NOT BE USED ON OTHERS WITHOUT THE EXPRESS WRITTEN PERMISSION OF AP ARCHITECTS. WRITTEN SHALL HAVE PRECEDENCE OVER ORAL. CONTRACTORS SHALL VERIFY AND BE RESPONSIBLE FOR ALL DIMENSIONS AND CONDITIONS SHOWN BY THESE DRAWINGS. SHOP DETAILS SHALL BE SUBMITTED TO THIS OFFICE FOR APPROVAL, BEFORE PROCEEDING WITH FABRICATION. © 2023

**BUILDINGS M-2 AND M-3  
 DEMOLITION LIGHTING PLANS**

**E5.10**

LIGHTING DEMOLITION PLAN

- ◇ REMOVE LIGHTING COMPLETE
- ◇ EXISTING LIGHTING TO REMAIN IN THIS SPACE
- ◇ REMOVE/REINSTALL EX UV FILTERS



3434 Truxtun Avenue, Suite 240  
Bakersfield, California, 93301  
tel|801.327.1930 fax|801.327.7204  
web|www.aparchitects.net

CAMPUS HVAC  
SYSTEM UPGRADE

Horace Mann  
Elementary School  
2715 Niles St, Bakersfield, CA, 93306  
Bakersfield City School District

ARCHITECT



JAMES PATRICK FOGARTY, AIA  
ARCHITECT C-19670



CONSULTANT



PROJECT INFO

Project No.	560-0016
Date	11/03/23
DSA File No.	1548
DSA No.	03-122671

REVISIONS

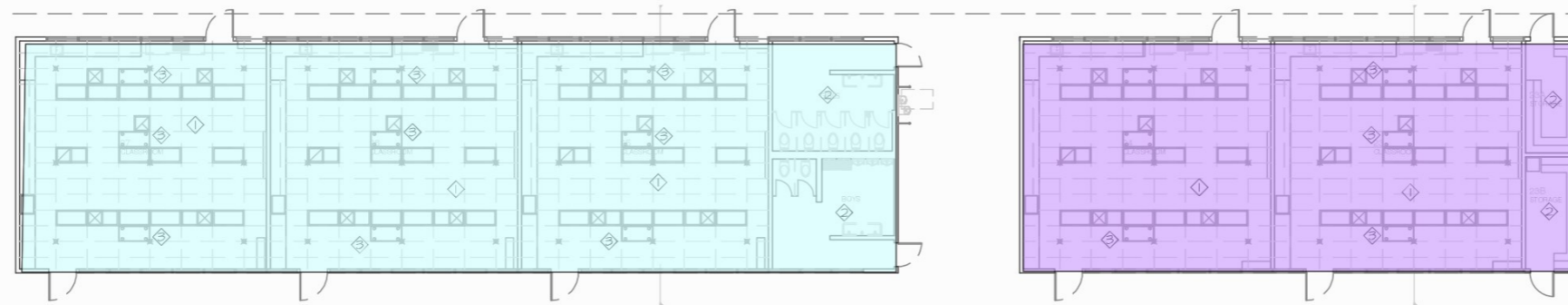
No.	Date	Item

THESE DRAWINGS ARE INSTRUMENTS OF SERVICE AND ARE THE PROPERTY OF AP ARCHITECTS. ALL DESIGN AND DRAWINGS ARE FOR THE USE ON THE SPECIFIC PROJECT AND SHALL NOT BE USED OTHERWISE WITHOUT THE EXPRESS WRITTEN PERMISSION OF AP ARCHITECTS. WRITTEN SHALL HAVE PRECEDENCE OVER SCALE DRAWINGS. CONTRACTORS SHALL VERIFY AND BE RESPONSIBLE FOR ALL DIMENSIONS AND CONDITIONS SHOWN BY THESE DRAWINGS. SHOP DETAILS SHALL BE SUBMITTED TO THIS OFFICE FOR APPROVAL BEFORE PROCEEDING WITH FABRICATION. © COPYRIGHT

BUILDINGS B-3 DEMOLITION  
LIGHTING PLAN

E5.11

	Remove Existing Lighting Fixture in This Area	3116.1 SQ FT	
	Remove Existing Lighting Fixture in This Area	1972.7 SQ FT	
	Remove Existing Lighting Fixture in This Area	3080.8 SQ FT	
	Remove Existing Lighting Fixture in This Area	2812.9 SQ FT	

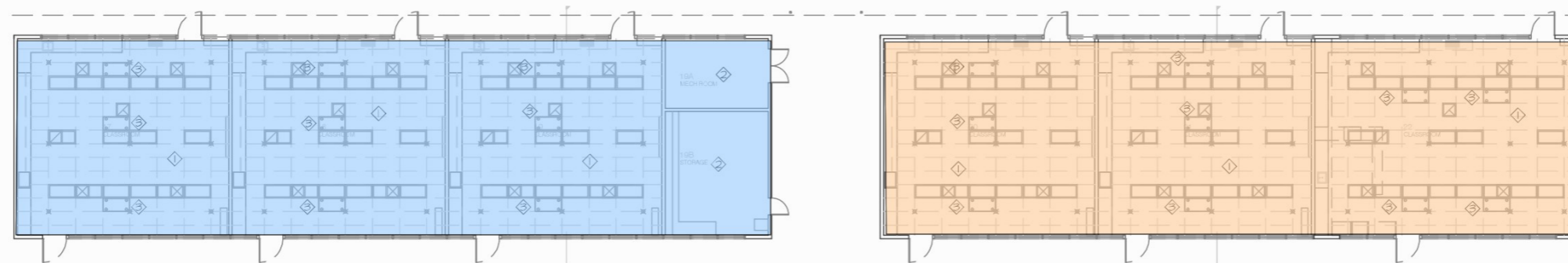


DEMOLITION LIGHTING PLAN - BUILDINGS B & C

SCALE: 1/8" = 1'-0"



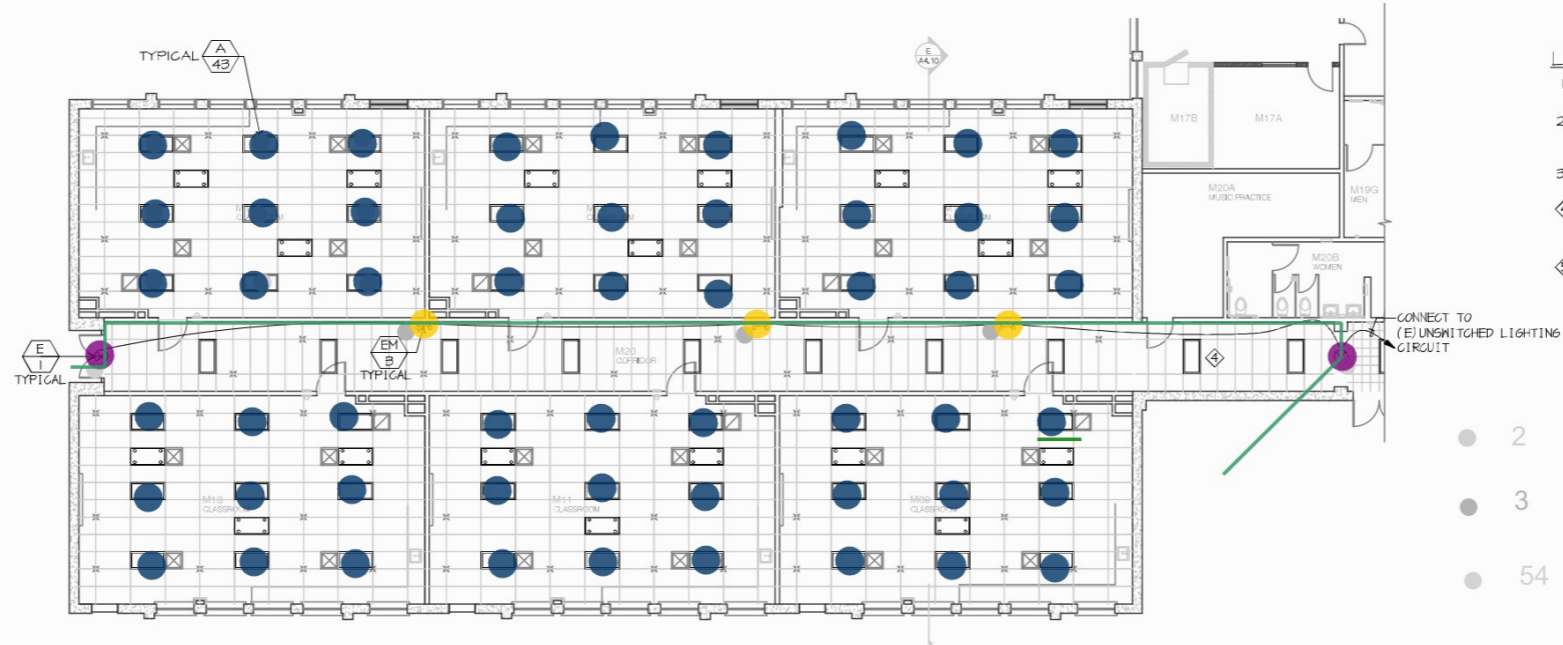
Type text here



DEMOLITION LIGHTING PLAN - BUILDINGS D & E

SCALE: 1/8" = 1'-0"





- LIGHTING NOTES**
1. CONNECT NEW LIGHTS TO EXISTING CIRCUIT + CONTROL
  2. SUPPORT LIGHT FIXTURES PER
  3. REMOVE AND REINSTALL EXISTING UV FILTERS
  4. EXISTING LIGHTING TO REMAIN, COORDINATE WITH MECHANICAL FOR REMOVAL OF HYDRONIC PIPING
  5. RELOCATE SWITCHES TO MODIFIED WALLS

- LF, A/43
  - LF, A/43
  - LF, EM/6
  - LF, E/1
  - LF, E/1
  - LF, EM/B
  - LF, EM/B
  - LF, B/36
  - Relocate Switches For Modification of Walls
- 54.0 EA
  - 100.0 EA
  - 4.0 EA
  - 3.0 EA
  - 2.0 EA
  - 3.0 EA
  - 171.8 FT
  - 242.8 FT
  - 275.0 FT
  - 501.0 FT
  - 9.0 EA
  - 409.7 SQ FT



LIGHTING PLAN - BUILDING M-3  
 SCALE: 1/8" = 1'-0"

IDENTIFICATION STAMP  
 DIV. OF THE STATE ARCHITECT  
 APP: 03-122671 INC.  
 REVIEWED FOR  
 SS  PLS  ACS   
 DATE: 11/08/2023

**ap**  
 architects

3434 Truxtun Avenue, Suite 240  
 Bakersfield, California, 93301  
 tel|805.327.1890 fax|805.327.7204  
 web|www.aparchitects.net

**CAMPUS HVAC SYSTEM UPGRADE**

Horace Mann  
 Elementary School  
 2715 Niles St, Bakersfield, CA, 93306  
 Bakersfield City School District

ARCHITECT

SEAL OF ARCHITECT  
 JAMES PATRICK FODARY  
 No. 0-19670  
 PEN  
 STATE OF CALIFORNIA

JAMES PATRICK FODARY, AIA  
 ARCHITECT 0-19670

CONSULTANT

**MPE**  
 MECHANICAL  
 ELECTRICAL  
 PLUMBING  
 DESIGN  
 IN BAKERSFIELD, CALIFORNIA  
 221021

KEY CONTACT  
 JAMES PATRICK FODARY, AIA  
 805.327.1890  
 805.327.7204  
 james.fodary@aparchitects.net

PROJECT INFO

Project No.	566-0016
Date	11/08/23
CSA File No.	156
CSA No.	03-122671

REVISIONS

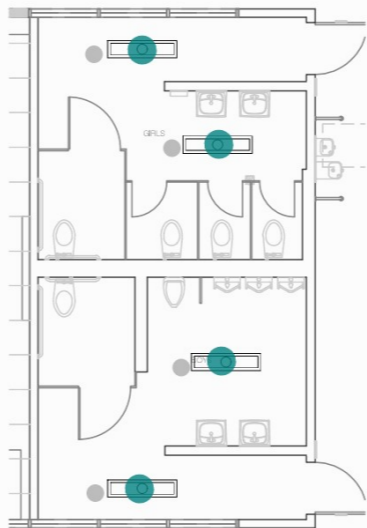
No.	Date	Item

THESE DRAWINGS ARE INSTRUMENTS OF SERVICE AND ARE THE PROPERTY OF AP ARCHITECTS. ALL DESIGN AND DRAWINGS ARE FOR THE USE OF THE SPECIFIC PROJECT AND SHALL NOT BE USED FOR ANY OTHER PROJECT WITHOUT THE EXPRESS WRITTEN PERMISSION OF AP ARCHITECTS. WRITTEN SHALL HAVE PRECEDENCE OVER REPRODUCED. CONTRACTORS SHALL VERIFY AND BE RESPONSIBLE FOR ALL DIMENSIONS AND CONDITIONS SHOWN BY THESE DRAWINGS. SHOP DETAILS SHALL BE SUBMITTED TO THIS OFFICE FOR APPROVAL, BEFORE PROCEEDING WITH FABRICATION. © COPYRIGHT

LIGHTING PLANS

**E5.20**

- LF, B/36
  - LF, B/36
  - LF, A/43
  - LF, A/43
  - LF, A/43
  - LF, A/43
  - LF, EM/6
  - LF, E/1
- ⌚ LWB, 3#12, 3/4" EMT
  - ⌚ #10 GA. Slack Safety Wire (For Troffer Light Support)
  - ⌚ #10 GA. Slack Safety Wire (For Troffer Light Support)
  - ⌚ #10 GA. Slack Safety Wire (For Troffer Light Support)
  - ⌚ #10 GA. Slack Safety Wire (For Troffer Light Support)
- 4.0 EA
  - 4.0 EA
  - 36.0 EA
  - 24.0 EA
  - 36.0 EA
  - 36.0 EA
  - 2.0 EA
  - 2.0 EA
  - 18.3 FT
  - 181.0 FT
  - 181.0 FT
  - 181.0 FT
  - 121.0 FT

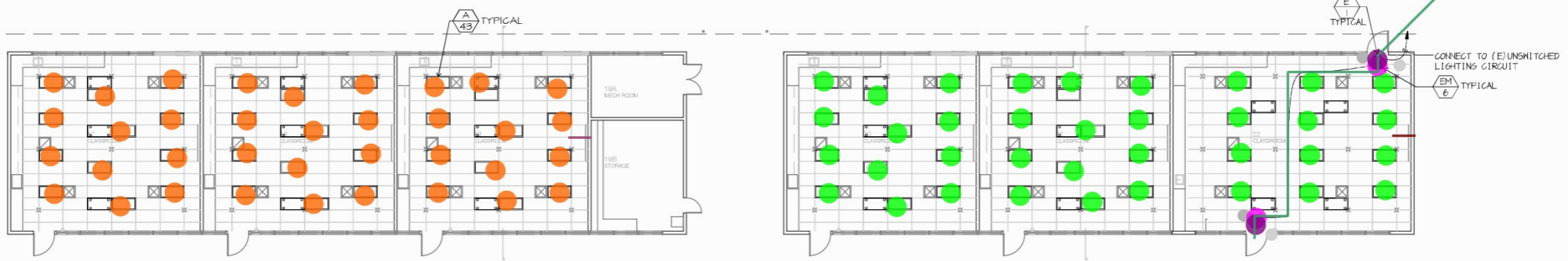


- LIGHTING NOTES**
- CONNECT NEW LIGHTS TO EXISTING CIRCUIT + CONTROL
  - SUPPORT LIGHT FIXTURES PER **A/43**
  - REMOVE AND REINSTALL ALL EXISTING UV FILTERS

LIGHTING PLAN - BUILDING B RESTROOM  
 SCALE: 1/4" = 1'-0"



LIGHTING PLAN - BUILDINGS B & C  
 SCALE: 1/8" = 1'-0"



LIGHTING PLAN - BUILDINGS D & E  
 SCALE: 1/8" = 1'-0"

- 4
- 132
- 2
- 2

IDENTIFICATION STAMP  
 DIV. OF THE STATE ARCHITECT  
 APP: 03-122671 INC.  
 REVIEWED FOR  
 SS  PLS  ACS   
 DATE: 11/08/2023

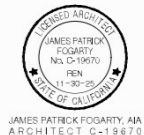
**ap**  
 architects

3434 Truxton Avenue, Suite 240  
 Bakersfield, California, 93301  
 tel|861.327.1930 fax|861.327.7204  
 web|www.aparchitects.net

**CAMPUS HVAC  
 SYSTEM UPGRADE**

Horace Mann  
 Elementary School  
 2710 Niles St, Bakersfield, CA, 93308  
 Bakersfield City School District

ARCHITECT



JAMES PATRICK FOGARTY, AIA  
 ARCHITECT C-19670

CONSULTANT



**PROJECT INFO**

Project No	588-0016
Date	11/01/23
DSA File No	15-6
DSA No	03-122671

**REVISIONS**

No	Date	Item

THESE DRAWINGS ARE INSTRUMENTS OF SERVICE AND ARE THE PROPERTY OF AP ARCHITECTS. ALL DESIGN AND DRAWINGS ARE FOR THE USE ON THE SPECIFIC PROJECT AND SHALL NOT BE USED ON OTHERS WITHOUT THE EXPRESS WRITTEN PERMISSION OF AP ARCHITECTS. WRITTEN SHALL HAVE PRECEDENCE OVER SPOKEN. ENGINEERING CONTRACTORS SHALL VERIFY AND BE RESPONSIBLE FOR ALL DIMENSIONS AND CONDITIONS SHOWN BY THESE DRAWINGS. SHOP DETAILS SHALL BE SUBMITTED TO THIS OFFICE FOR APPROVAL BEFORE PROCEEDING WITH FABRICATION. © COPYRIGHT

LIGHTING PLANS

**E5.21**