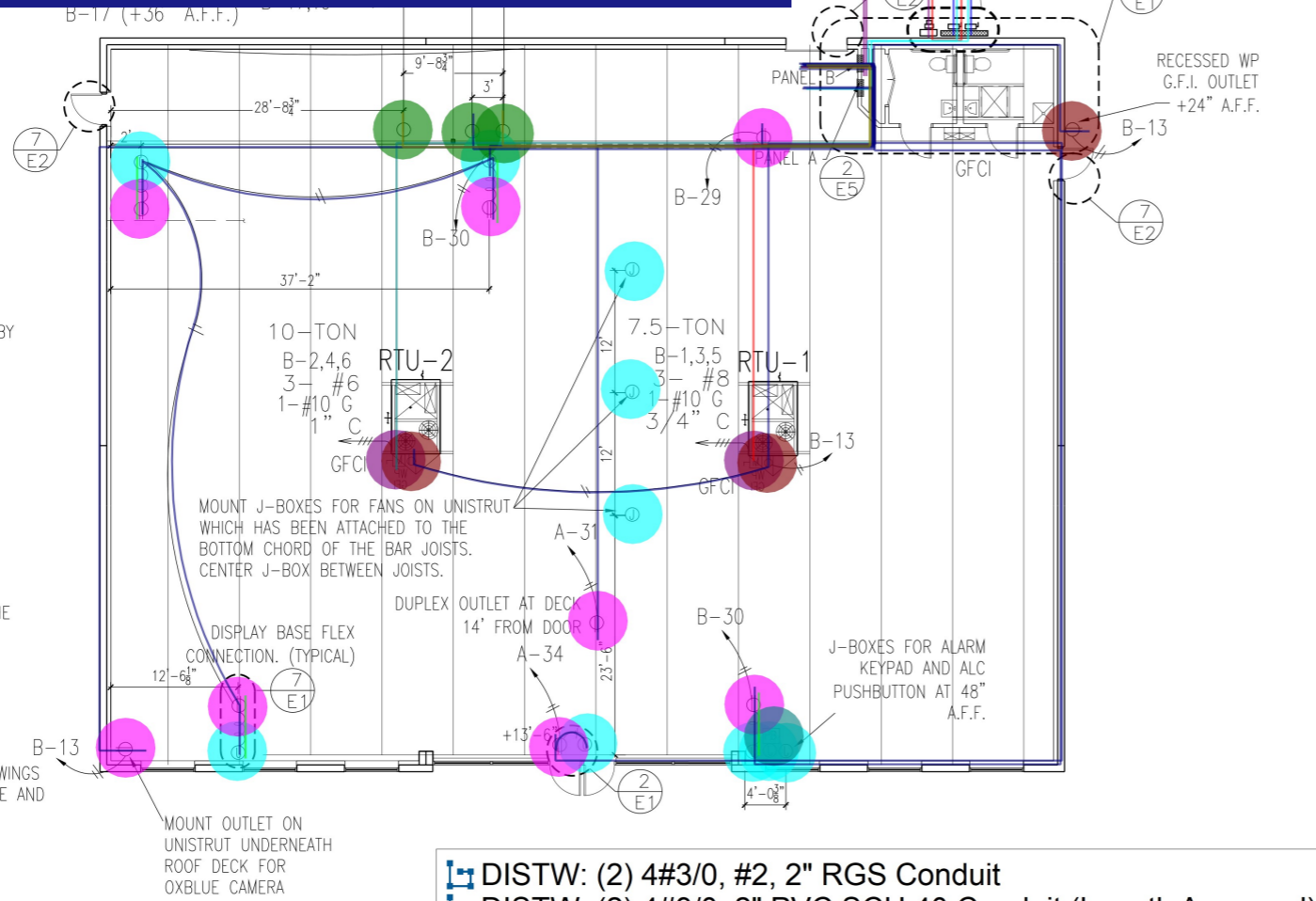




Lofty Estimation

Accurate Estimates, Every Time

+1-551-294-3809 Info@loftystemation.com



CEILING FAN NOTES:
1. CEILING FANS ARE FURNISHED BY AUTOZONE AND INSTALLED BY CONTRACTOR.
2. FANS ARE HUNTER MODEL #28692 AND THE WALL MOUNTED SPEED CONTROLLER IS MODEL #27180.
3. FANS ARE TO BE MOUNTED TO J-BOX ATTACHED TO UNISTRUT WHICH HAS BEEN ATTACHED TO THE BOTTOM CHORD OF THE BAR JOISTS.
4. WIRE FANS TO THE CLOSEST SALES FLOOR LIGHT CIRCUIT AND MOUNT SPEED CONTROLLER ON THE WALL NEXT TO THE THERMOSTATS. SEE DETAIL 3/E-5 FOR LOCATION.

NOTE: SEE CIVIL DRAWINGS FOR SERVICE ENTRANCE AND METER LOCATION.

ELECTRICAL SERVICE EQUIPMENT (COORDINATE FINAL LOCATION WITH SITE PLAN. REFER TO DRAWING 'E-4' FOR SCHEMATIC ONE LINE - ELECTRICAL SERVICE)
FOR RESTROOM POWER REQUIREMENTS. SEE

ELECTRICAL NOTES
DESIGN PARAMETERS: NATIONAL ELECTRICAL CODE - 2020
COMPLY WITH LATEST EDITION OF NATIONAL ELECTRICAL CODE ALONG WITH ALL LOCAL, STATE, AND UTILITY REGULATIONS OR LAWS. PROVIDE UL APPROVED MATERIALS AND DEVICES.

- ITEMS FURNISHED BY AUTOZONE:**
- A. FUSED DISCONNECTS
 - B. PANELBOARDS
 - C. CIRCUIT BREAKERS
 - D. ALL LIGHT FIXTURES
 - E. LAMPS
 - F. LIGHTING CONTROL PANEL & ACC.
 - G. OCCUPANCY SENSING LIGHT SWITCHES
 - H. PHOTOCELLS
 - I. CONTROL RELAYS
 - J. BALLASTS
 - K. SITE LIGHT POLES AND BRACKETS

WORK INCLUDED:
A. CONDUIT, WIRES, CABLE, AND WIRING DEVICES.
B. PRIMARY WIRING, CONDUIT AND FINAL CONNECTIONS FOR ALL SIGN CIRCUITS.
C. CONDUIT AND PULL STRINGS FOR DATA/TELEPHONE RUNS (WIRING N.I.C.)
D. CONDUIT AND PULL STRINGS FOR THERMOSTATS (WIRING BY MECHANICAL CONTRACTOR).
E. CONDUIT AND PULL STRINGS FOR SECURITY SYSTEM (WIRING N.I.C.).
F. FIELD TESTING.
G. ELECTRIC SERVICE ENTRANCE AND UTILITY COORDINATION.
H. TELEPHONE SERVICE ENTRANCE AND UTILITY COORDINATION.

SERVICE ENTRANCE, ELECTRIC AND TELEPHONE:
A. ALL WIRE CONNECTIONS AND TERMINATIONS IN WIREWAY, SERVICE DISCONNECTS AND PANELBOARDS SHALL BE RATED AT 75 DEG C.
B. SUBMIT TO LOCAL UTILITY ALL REQUIRED DRAWINGS, LOADS AND ANY OTHER INFORMATION NEEDED TO OBTAIN SERVICE.
C. PROVIDE ALL MATERIALS AND INSTALLATION REQUIRED TO COMPLETELY CONNECT TO THE SERVING UTILITY. WORK SHOULD INCLUDE, BUT NOT NECESSARILY BE LIMITED TO, PRIMARY CONDUITS, CABLE (IF REQUIRED), PAD MOUNTED TRANSFORMER PADS, GROUNDING METERING PROVISIONS, SECONDARY CONDUCTORS AND CONDUIT, ALL AS REQUIRED BY THE LOCAL UTILITY.
D. FURNISH AND INSTALL CONDUIT ALONG WITH PULL BOXES, FOR TELEPHONE SERVICE AS REQUIRED BY SERVICE PROVIDER. SEE CIVIL DRAWINGS FOR LOCATIONS AND CONDUIT SIZE. CONDUIT IS TO RUN FROM THE TELEPHONE PANEL LOCATION IN THE BUILDING TO THE TELEPHONE COMPANY'S POINT OF CONNECTION, WHICH WILL EITHER BE A GROUND MOUNTED PEDESTAL OR A POINT USUALLY BETWEEN 10 FEET AND 15 FEET ABOVE GRADE ON A UTILITY POLE. CONDUIT SHALL BE CONTINUOUS FROM END TO END.

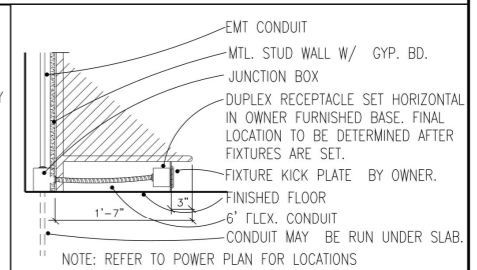
PANELBOARDS:
A. INSTALL PANELBOARDS SECURELY INTO POSITION AS SHOWN ON DETAIL 2/E5 AND 3/E5
B. CONTRACTOR TO VERIFY WITH THE UTILITY COMPANY THAT THE PANELS ARE ACCEPTABLE AND IF NOT, CONTACT THE AUTOZONE PROJECT MANAGER FOR FURTHER INSTRUCTIONS.
C. CONNECT ALL CIRCUITS EXACTLY AS SHOWN ON THE PANEL SCHEDULE.

4 GENERAL NOTES

SYM	DESCRIPTION	FURN.	REMARKS
⊗	EXHAUST FAN RECESSED	AUTOZONE	INSTALLED BY HVAC CONTRACTOR, WIRED BY ELECTRICAL CONTRACTOR.
⊙	JUNCTION BOX	G.C.	SEE SHT. E2 FOR ADDITIONAL JUNCTION BOX LOCATIONS AND REQUIREMENTS AT DOORS FOR ALARMS.
⊖	THERMOSTAT	AUTOZONE	WALL MOUNT ABOVE ELECTRICAL PANELS. 9'-0" A.F.F. MAX.
⊞	HVAC DISCONNECT WITH UNIT		REFER TO HVAC SPECIFICATIONS
⊞	POWER POLES	AUTOZONE	REFER TO PLAN FOR LOCATION
⊕	SIMPLEX RECPT.	G.C.	REFER TO PLAN FOR LOCATIONS
⊕/⊞	DUPLEX RECPT./ FLOOR RECPT.	G.C.	REFER TO PLAN FOR LOCATIONS
⊕	QUADPLEX RECPT.	G.C.	REFER TO PLAN FOR LOCATIONS
⊞	WEATHERPROOF DUPLEX RECPT.(GFI)	G.C.	REFER TO PLAN FOR LOCATIONS
⊙	JUNCTION BOX WITH 6'-0" FLEX CONDUIT AT WALL & H.P. COUNTERS	G.C. (FIXTURE KICK PLATE BY OWNER)	J-BOX AT FLOOR LEVEL. FLEX CONDUIT SET UNDER DISPLAY FIXTURES. RECEPTACLE MOUNTED TO BASE PLATE. SEE DETAIL 7/E1

POWER SCHEDULE

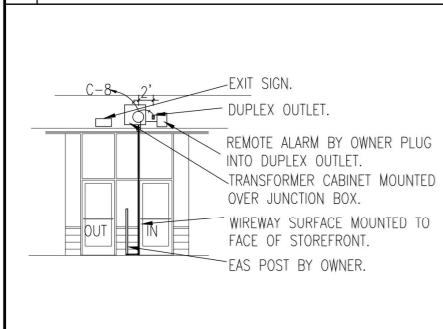
SYM	DESCRIPTION	QTY
⊞	WEATHERPROOF DUPLEX RECPT.(GFI)	2.0 EA
⊙	JUNCTION BOX WITH 6'-0" FLEX CONDUIT AT WALL & H.P. COUNTERS	10.0 EA
⊕	SIMPLEX RECPT.	8.0 EA
⊕	DUPLEX RECPT./ FLOOR RECPT.	3.0 EA
⊕	QUADPLEX RECPT.	1.0 EA
⊞	HVAC DISCONNECT WITH UNIT	3.0 EA
⊞	POWER POLES	30.1 FT
⊞	EXHAUST FAN RECESSED	92.2 FT
⊞	WEATHERPROOF DUPLEX RECPT.(GFI)	56.8 FT
⊞	JUNCTION BOX WITH 6'-0" FLEX CONDUIT AT WALL & H.P. COUNTERS	891.2 FT
⊞	WEATHERPROOF DUPLEX RECPT.(GFI)	24.3 FT
⊞	JUNCTION BOX WITH 6'-0" FLEX CONDUIT AT WALL & H.P. COUNTERS	114.6 FT



7 RECEPTACLE DETAIL / SUPPLY FIXTURES

The following statement for all Electrical drawings:
"I certify that these documents were prepared by or approved by me and that I am a duly licensed professional engineer under the laws of the State of Maryland, License Number 14850, expiration date 03-28-2024."

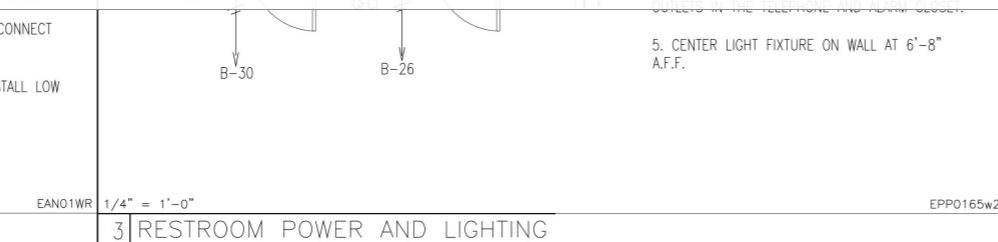
1 POWER PLAN



NOTES:
1. AUTOZONE'S EQUIPMENT INSTALLER WILL FURNISH & INSTALL ALL REQUIRED SECURITY ALARM EQUIPMENT INCLUDING FLOOR MOUNTED TRANSFORMER CABINET AND REMOTE ALARM SOUNDER AND COUNTER ABOVE THE DOOR.
2. GENERAL CONTRACTOR TO INSTALL DUAL WIREWAY ON THE SURFACE OF THE STOREFRONT IN ROUTING AS INDICATED TO CONNECT FLOOR-MOUNTED EAS POSTS TO THE JUNCTION BOX ABOVE STOREFRONT.
3. GENERAL CONTRACTOR TO LEAVE SNAP-ON COVER OFF THE RACEWAY SO THAT AUTOZONE'S EQUIPMENT VENDOR CAN INSTALL LOW VOLTAGE WIRING FOR THE REMOTE ALARM.

2 ELECTRONIC SECURITY DETAIL

- **DISTW:** (2) 4#3/0, #2, 2" RGS Conduit **12.8 FT**
- **DISTW:** (2) 4#3/0, 2" PVC SCH 40 Conduit (Length Assumed) **20.1 FT**
- **DISTW:** 4#3/0, #6, 2" RGS Conduit **47.1 FT**
- **DISTW:** 4#3/0, 2" RGS Conduit **20.0 FT**
- **DS:** 3P/60A Disconnect Switch With HVAC Unit **2.0 EA**
- **MISC:** Junction Box **10.0 EA**
- **P:** Duplex Receptacle **8.0 EA**
- **P:** Duplex Receptacle, GFCI, WP **3.0 EA**
- **P:** Push Button **1.0 EA**
- **P:** Simplex Receptacle **3.0 EA**
- **PW:** 1/2" EMT Conduit With Pull String **30.1 FT**
- **PW:** 3#6, #10, 1" EMT Conduit **92.2 FT**
- **PW:** 3#8, #10, 3/4" EMT Conduit **56.8 FT**
- **PW:** 3#12, 1/2" EMT Conduit **891.2 FT**
- **PW:** 3#12, 1/2" Flexible Metallic Conduit **24.3 FT**
- **PW:** 5#12, 3/4" EMT Conduit **114.6 FT**



3 RESTROOM POWER AND LIGHTING

6 ELECTRICAL NOTES

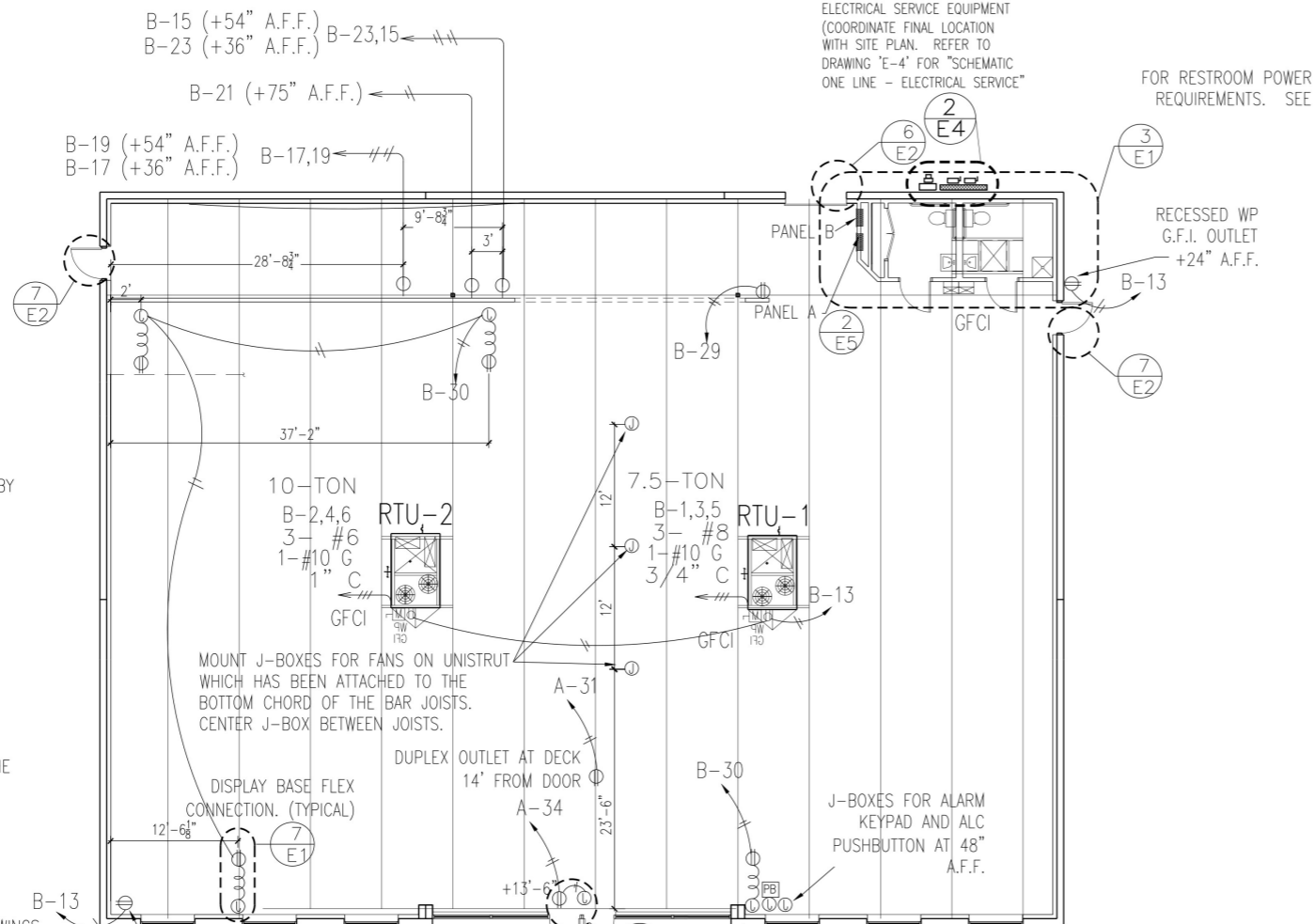
REVISIONS

REV#	DESCRIPTION
1	REV1
2	REV2
3	REV3
4	REV4
5	REV5
6	REV6

AutoZone Store No. 5313
8209 LIBERTY RD
BALTIMORE MD 21244
POWER PLAN / GENERAL NOTES

ENGINEER: DANNY E. DOSS P.E.
132 Kelley Drive
Rogers, Arkansas 72756
TEL: (479) 631-1712 FAX: (479) 631-1854
For Bidding & Contractor Information Contact:
Dodge Data & Analytics, Tel. 1-844-326-3826 ext 9429
Cindy.searcy@construction.com

05/02/22
65W2-R
E-1

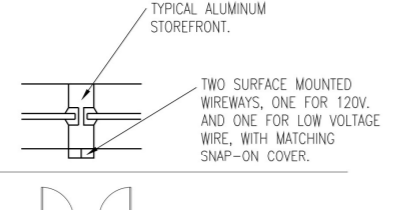
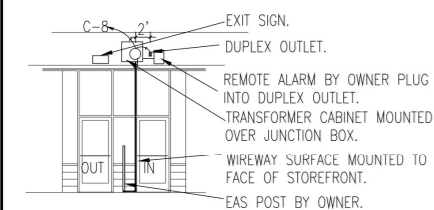


CEILING FAN NOTES:
 1. CEILING FANS ARE FURNISHED BY AUTOZONE AND INSTALLED BY CONTRACTOR.
 2. FANS ARE HUNTER MODEL #28692 AND THE WALL MOUNTED SPEED CONTROLLER IS MODEL #27180.
 3. FANS ARE TO BE MOUNTED TO J-BOX ATTACHED TO UNISTRUT WHICH HAS BEEN ATTACHED TO THE BOTTOM CHORD OF THE BAR JOISTS.
 4. WIRE FANS TO THE CLOSEST SALES FLOOR LIGHT CIRCUIT AND MOUNT SPEED CONTROLLER ON THE WALL NEXT TO THE THERMOSTATS. SEE DETAIL 3/E-5 FOR LOCATION.

NOTE: SEE CIVIL DRAWINGS FOR SERVICE ENTRANCE AND METER LOCATION.

1/8" = 1'-0"

1 POWER PLAN

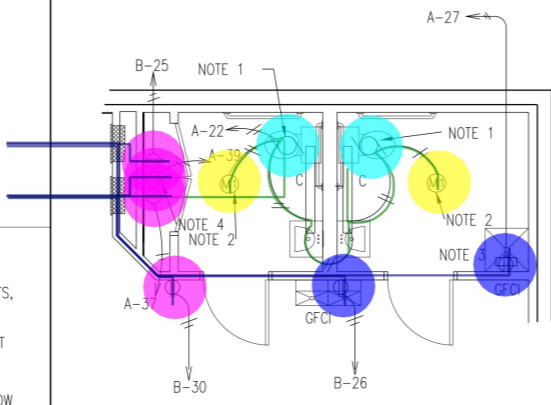


NOTES:
 1. AUTOZONE'S EQUIPMENT INSTALLER WILL FURNISH & INSTALL ALL REQUIRED SECURITY ALARM EQUIPMENT INCLUDING FLOOR POSTS, TRANSFORMER CABINET AND REMOTE ALARM SOUNDER AND COUNTER ABOVE THE DOOR.
 2. GENERAL CONTRACTOR TO INSTALL DUAL WIREWAY ON THE SURFACE OF THE STOREFRONT IN ROUTING AS INDICATED TO CONNECT FLOOR-MOUNTED EAS POSTS TO THE JUNCTION BOX ABOVE STOREFRONT.
 3. GENERAL CONTRACTOR TO LEAVE SNAP-ON COVER OFF THE RACEWAY SO THAT AUTOZONE'S EQUIPMENT VENDOR CAN INSTALL LOW VOLTAGE WIRING FOR THE REMOTE ALARM.

1/8" = 1'-0"

2 ELECTRONIC SECURITY DETAIL

- LC: Motion Sensor, CMR-9 (Furnished By Autozone) 2.0 EA
- LF: C NAN EA
- LFW: 3#12, 1/2" EMT Conduit 40.5 FT
- P: Duplex Receptacle 4.0 EA
- P: Duplex Receptacle, GFCI 2.0 EA
- P: Exhaust Fan Connection 2.0 EA
- PW: 3#12, 1/2" EMT Conduit 85.7 FT



NOTES:
 1. CONNECT EXHAUST FANS TO RESTROOM LIGHT AND MOTION SENSOR.
 2. MOTION SENSOR CMR-9 FURNISHED BY AUTOZONE INSTALLED BY CONTRACTOR.
 3. WATER HEATER WILL BE A MINITANK BOSCH/TRONIC MODEL ES4, PROVIDED BY AUTOZONE. ELECTRICAL CONTRACTOR TO PROVIDE FINAL HOOKUP OF WATER HEATER. WATER HEATER TO BE MOUNTED ON THE WALL ABOVE THE MOP SINK.
 4. REFER TO DETAIL 1/E4 FOR LOCATION OF OUTLETS IN THE TELEPHONE AND ALARM CLOSET.
 5. CENTER LIGHT FIXTURE ON WALL AT 6'-8" A.F.F.

1/4" = 1'-0"

3 RESTROOM POWER AND LIGHTING

ELECTRICAL NOTES
DESIGN PARAMETERS: NATIONAL ELECTRICAL CODE - 2020
 COMPLY WITH LATEST EDITION OF NATIONAL ELECTRIC CODE ALONG WITH ALL LOCAL, STATE, AND UTILITY REGULATIONS OR LAWS. PROVIDE UL APPROVED MATERIALS AND DEVICES.

- ITEMS FURNISHED BY AUTOZONE:**
- A. FUSED DISCONNECTS
 - B. PANELBOARDS
 - C. CIRCUIT BREAKERS
 - D. ALL LIGHT FIXTURES
 - E. LAMPS
 - F. LIGHTING CONTROL PANEL & ACC.
 - G. OCCUPANCY SENSING LIGHT SWITCHES
 - H. PHOTOCELLS
 - I. CONTROL RELAYS
 - J. BALLASTS
 - K. SITE LIGHT POLES AND BRACKETS

WORK INCLUDED:
 A. CONDUIT, WIRES, CABLE, AND WIRING DEVICES.
 B. PRIMARY WIRING, CONDUIT AND FINAL CONNECTIONS FOR ALL SIGN CIRCUITS.
 C. CONDUIT AND PULL STRINGS FOR DATA/TELEPHONE RUNS. (WIRING N.I.C.)
 D. CONDUIT AND PULL STRINGS FOR THERMOSTATS (WIRING BY MECHANICAL CONTRACTOR).
 E. CONDUIT AND PULL STRINGS FOR SECURITY SYSTEM (WIRING N.I.C.).
 F. FIELD TESTING.
 G. ELECTRIC SERVICE ENTRANCE AND UTILITY COORDINATION.
 H. TELEPHONE SERVICE ENTRANCE AND UTILITY COORDINATION.

SERVICE ENTRANCE, ELECTRIC AND TELEPHONE:
 A. ALL WIRE CONNECTIONS AND TERMINATIONS IN WIREWAY, SERVICE DISCONNECTS AND PANELBOARDS SHALL BE RATED AT 75 DEG C.
 B. SUBMIT TO LOCAL UTILITY ALL REQUIRED DRAWINGS, LOADS AND ANY OTHER INFORMATION NEEDED TO OBTAIN SERVICE.
 C. PROVIDE ALL MATERIALS AND INSTALLATION REQUIRED TO COMPLETELY CONNECT TO THE SERVING UTILITY. WORK SHOULD INCLUDE, BUT NOT NECESSARILY BE LIMITED TO, PRIMARY CONDUITS, CABLE (IF REQUIRED), PAD MOUNTED TRANSFORMER PADS, GROUNDING METERING PROVISIONS, SECONDARY CONDUCTORS AND CONDUIT, ALL AS REQUIRED BY THE LOCAL UTILITY.
 D. FURNISH AND INSTALL CONDUIT ALONG WITH PULL BOXES, FOR TELEPHONE SERVICE AS REQUIRED BY SERVICE PROVIDER. SEE CIVIL DRAWINGS FOR LOCATIONS AND CONDUIT SIZE. CONDUIT IS TO RUN FROM THE TELEPHONE PANEL LOCATION IN THE BUILDING TO THE TELEPHONE COMPANY'S POINT OF CONNECTION, WHICH WILL EITHER BE A GROUND MOUNTED PEDESTAL OR A POINT USUALLY BETWEEN 10 FEET AND 15 FEET ABOVE GRADE ON A UTILITY POLE. CONDUIT SHALL BE CONTINUOUS FROM END TO END.

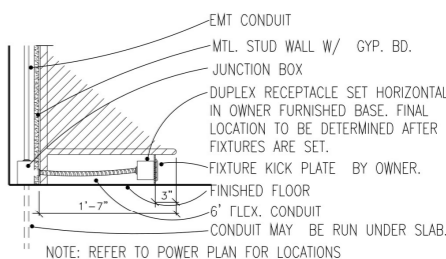
PANELBOARDS:
 A. INSTALL PANELBOARDS SECURELY INTO POSITION AS SHOWN ON DETAIL 2/E5 AND 3/E5
 B. CONTRACTOR TO VERIFY WITH THE UTILITY COMPANY THAT THE PANELS ARE ACCEPTABLE AND IF NOT, CONTACT THE AUTOZONE PROJECT MANAGER FOR FURTHER INSTRUCTIONS.
 C. CONNECT ALL CIRCUITS EXACTLY AS SHOWN ON THE PANEL SCHEDULE.

4 GENERAL NOTES

SYM	DESCRIPTION	FURN.	REMARKS
⊗	EXHAUST FAN RECESSED	AUTOZONE	INSTALLED BY HVAC CONTRACTOR, WIRED BY ELECTRICAL CONTRACTOR.
⊙	JUNCTION BOX	G.C.	SEE SHT. E2 FOR ADDITIONAL JUNCTION BOX LOCATIONS AND REQUIREMENTS AT DOORS FOR ALARMS.
⊖	THERMOSTAT	AUTOZONE	WALL MOUNT ABOVE ELECTRICAL PANELS. 9'-0" A.F.F. MAX.
⊞	HVAC DISCONNECT WITH UNIT		REFER TO HVAC SPECIFICATIONS
⊞	POWER POLES	AUTOZONE	REFER TO PLAN FOR LOCATION
⊕	SIMPLEX RECPT.	G.C.	REFER TO PLAN FOR LOCATIONS
⊕/⊞	DUPLEX RECPT./ FLOOR RECPT.	G.C.	REFER TO PLAN FOR LOCATIONS
⊕	QUADPLEX RECPT.	G.C.	REFER TO PLAN FOR LOCATIONS
⊞ WP GFI	WEATHERPROOF DUPLEX RECPT.(GFI)	G.C.	REFER TO PLAN FOR LOCATIONS
⊙ WP GFI	JUNCTION BOX WITH 6'-0" FLEX CONDUIT AT WALL & H.P. COUNTERS	G.C. (FIXTURE KICK PLATE BY OWNER)	J-BOX AT FLOOR LEVEL. FLEX CONDUIT SET UNDER DISPLAY FIXTURES. RECEPTACLE MOUNTED TO BASE PLATE. SEE DETAIL 7/E1

5 POWER SCHEDULE

A. ELECTRICAL CONTRACTOR TO PROVIDE EMPTY CONDUIT & BOXES BETWEEN RTU'S AND THERMOSTAT LOCATIONS INDICATED. MECHANICAL CONTRACTOR TO PROVIDE CONTROL WIRING AND COMPLETE INSTALLATION. REFER TO SHEETS E5 AND M1. J-BOXES FOR THERMOSTATS SHALL BE INSTALLED HORIZONTALLY W/ A MINIMUM OF 6" BETWEEN BOXES.
 B. REFER TO SHEET E2 FOR POWER POLE, JUNCTION BOX AND FLOOR OUTLET LOCATIONS. ALL OTHER CONDUITS FOR RECEPTACLE MAY BE RUN EITHER OVERHEAD OR UNDER SLAB.
 C. REFER TO SHEET E3 FOR JUNCTION BOX LOCATIONS AND POWER CIRCUITS FOR WALL SIGNAGE. ELECTRICAL CONTRACTOR SHALL MAKE ALL FINAL CONNECTIONS FOR WALL SIGNAGE.
 D. CONDUIT RUN OVERHEAD SHALL BE POSITIONED TO BE TIGHT AGAINST THE BOTTOM OF THE TOP CHORD OF THE BAR JOIST, AND BE IN COMPLIANCE WITH THE REQUIREMENTS OF THE NATIONAL ELECTRIC CODE.
 E. REFER TO CIVIL DRAWINGS FOR PARKING LOT SITE LIGHT LOCATIONS AND PYLON SIGN LOCATION. PARKING LOT SITE LIGHTS TYPICALLY HAVE TWO 209W FIXTURES PER POLE AND SHOULD BE WIRED TWO POLES PER CIRCUIT. FINAL CONNECTIONS FOR PYLON SIGN AND BUILDING WALLS SIGNS TO BE MADE BY ELECTRICAL CONTRACTOR.
 F. REFER TO DETAIL 3 AND 4/M1 FOR RTU CONVENIENCE OUTLET LOCATION.
 G. MOUNT JUNCTION BOX TIGHT TO FLOOR FOR DISPLAY BASE FLEX OUTLET. OUTLET ON FLEX TO BE INSTALLED HORIZONTALLY IN FIXTURE BASE AFTER FIXTURES ARE SET IN PLACE.
 H. NO RECEPTACLE BRANCH CIRCUIT SHALL BE INSTALLED IN A MULTIWIRE BRANCH CIRCUIT CONFIGURATION. NEUTRAL CONDUCTORS SHALL NOT BE SHARED BETWEEN DIFFERENT CIRCUITS.



7 RECEPTACLE DETAIL / SUPPLY FIXTURES

The following statement for all Electrical drawings:
 "I certify that these documents were prepared by or approved by me and that I am a duly licensed professional engineer under the laws of the State of Maryland, License Number 14850, expiration date 03-28-2024."

6 ELECTRICAL NOTES

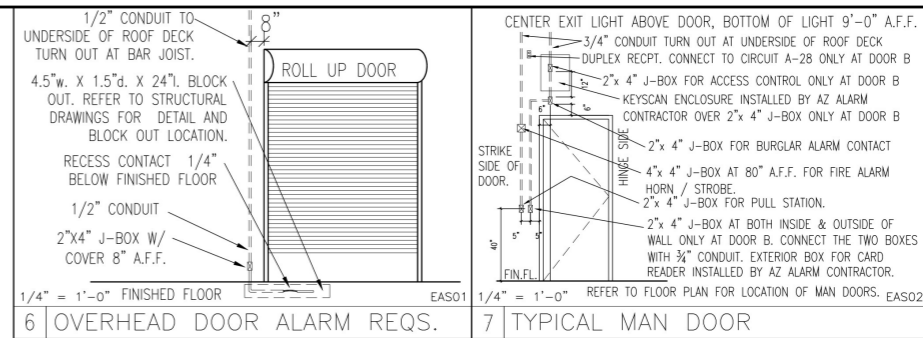
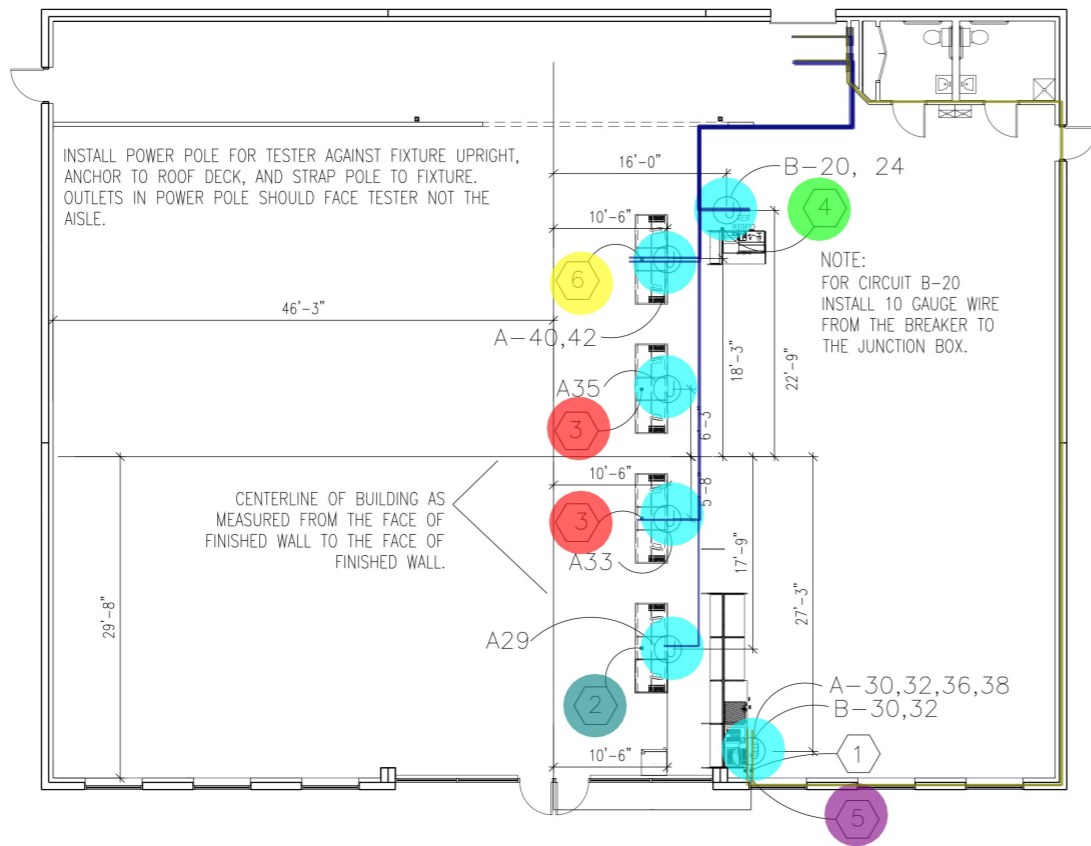
REVISIONS

1	REV1		
2	REV2		
3	REV3		
4	REV4		
5	REV5		
6	REV6		

AutoZone Store No. 5313
 8209 LIBERTY RD
 BALTIMORE MD 21244
POWER PLAN / GENERAL NOTES

ENGINEER: DANNY E. DOSS P.E.
 132 Kelley Drive
 Rogers, Arkansas 72756
 TEL: (479) 631-1712 FAX: (479) 631-1854
 For Bidding & Contractor Information Contact:
 Dodge Data & Analytics, Tel. 1-844-326-3826 ext 9429
 Cindy.searcy@construction.com

05/02/22
 65W2-R
E-1



- 1/4" = 1'-0" FINISHED FLOOR EAS01 1/4" = 1'-0" REFER TO FLOOR PLAN FOR LOCATION OF MAN DOORS, EAS02
- 6 OVERHEAD DOOR ALARM REQS. 7 TYPICAL MAN DOOR
- A. LABEL ALL CIRCUITS ON J-BOXES AND ALL OUTLETS WITH MULTIPLE CIRCUITS.
 - B. ALL WIRING ON FLOOR UNDER COUNTERS SHALL BE IN 3/8" FLEXIBLE CONDUIT.
 - C. RUN ALL CONDUIT AND CABLES UNDER AND NOT THROUGH SHELF SUPPORTS.
 - D. DO NOT PERMANENTLY ATTACH OUTLET BOXES OR FLEX CONDUIT TO FLOOR.
 - E. MOUNT OUTLETS IN KICKPLATES AFTER OWNER'S FIXTURES HAVE BEEN INSTALLED.
 - F. INSTALL JUNCTION BOX AT LOCATIONS SHOWN FOR POWER. INSTALL AUTOZONE FURNISHED FLEXIBLE QUICK CONNECTORS TO EACH BOX INDICATED POWER POLE SCHEDULE.
 - G. AUTOZONE'S CONTRACTOR CROSSCOM WILL INSTALL CAT. 5 CABLE FOR DATA AND PHONE LINES. IN ADDITION TO TAGGING THE ENDS OF ALL CABLES, CROSSCOM WILL CRIMP THE ENDS OF ALL CABLES WITH A 8 PIN RJ-45 CONNECTOR.
 - H. ALL CIRCUITS OVER 100 FEET IN LENGTH SHALL BE RUN WITH #10 AWG.
 - I. PROVIDE 2 PULL WIRES IN ALL EMPTY CONDUITS.
 - J. LOCATE ALL POWER POLES AFTER FIXTURES ARE IN PLACE.
- 1/8" = 1'-0" EUPN01

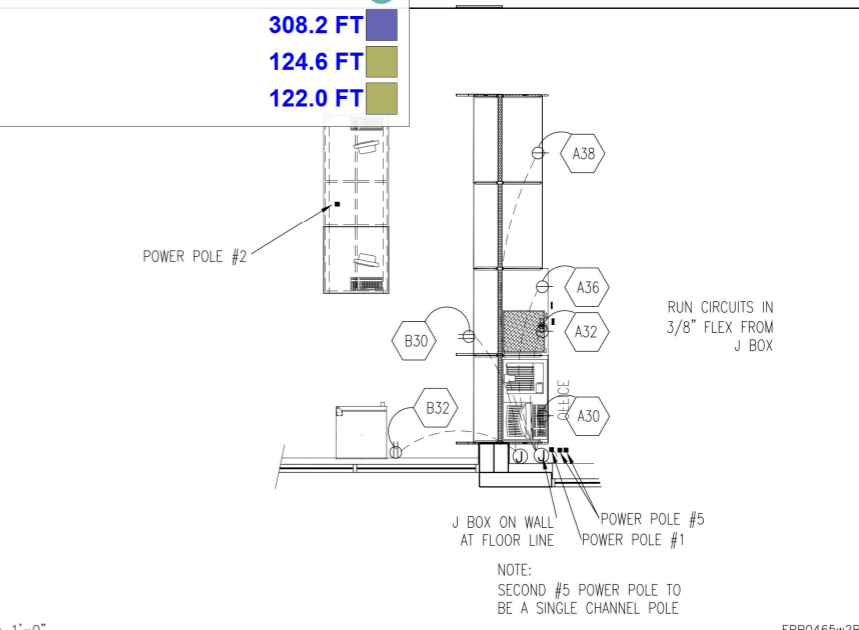
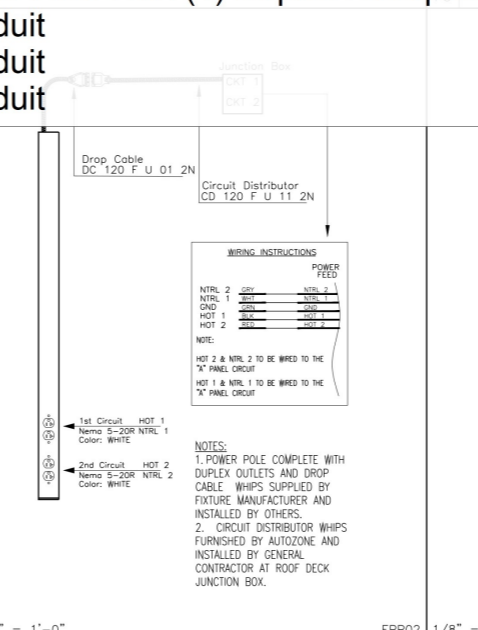
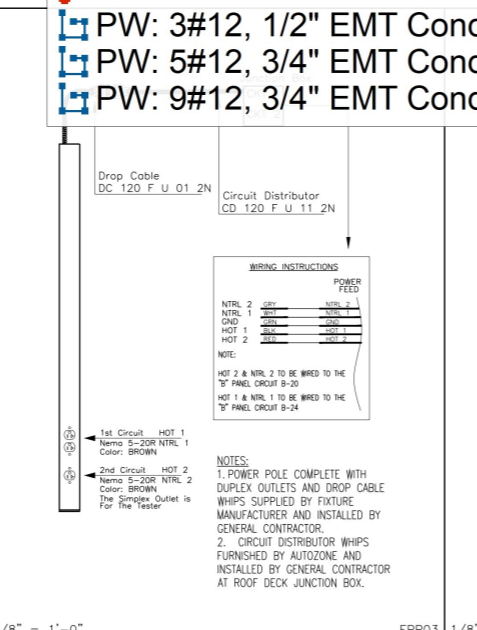
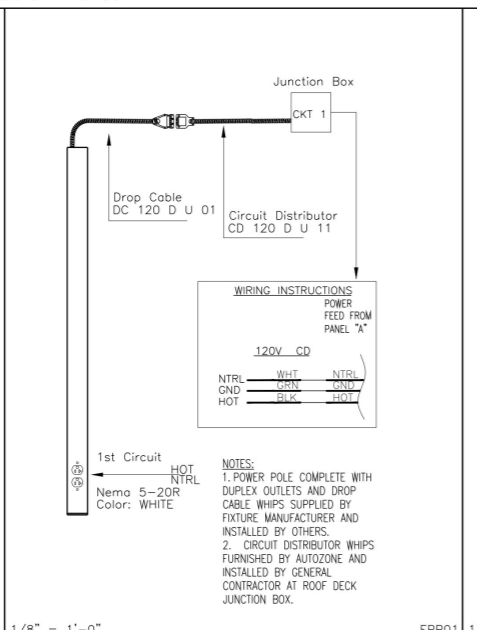
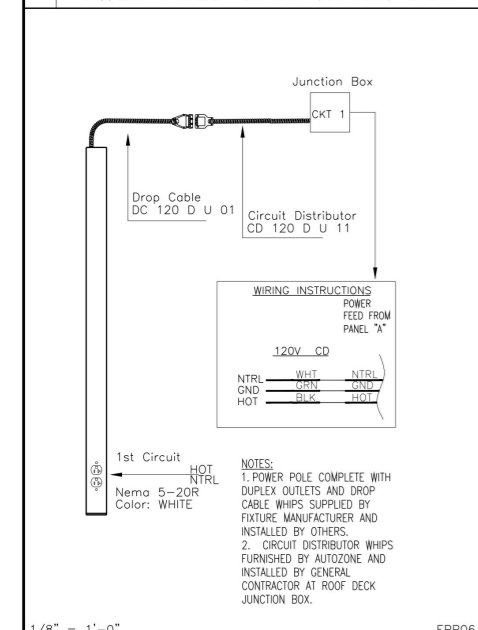
- 8 GENERAL WIRING AND POWER NOTES
- 1 OFFICE AREA POWER POLE - ALL CIRCUITS ARE HARD WIRED TO POLE FROM JUNCTION BOX WITH FLEXIBLE CONDUIT.
 - 2 CHECKOUT COUNTER POWER POLE WITH ONE DUPLEX OUTLET PRE-WIRED ON POLE FOR CONNECTION TO INDIVIDUAL CIRCUITS IN AUTOZONE FURNISHED QUICK CONNECTOR.
 - 3 PARTS POD POWER POLE WITH ONE DUPLEX OUTLET PRE-WIRED ON POLE FOR CONNECTION TO AUTOZONE FURNISHED QUICK CONNECTOR.
 - 4 TEST STATION POWER POLE WITH ONE SIMPLEX OUTLET AND ONE DUPLEX OUTLET PRE-WIRED ON POLE FOR CONNECTION TO INDIVIDUAL CIRCUITS IN AUTOZONE FURNISHED QUICK CONNECTOR. ATTACH TOP OF POWER POLE TO ROOF DECK AND STRAP POLE TO THE FACE OF THE FIXTURE UPRIGHT. BOTTOM OF POLE SHOULD BE A MINIMUM OF 30" ABOVE FLOOR AND OUTLETS SHOULD FACE THE TEST STATION.
 - 5 CAMERA SYSTEMS POWER POLE TO BE LOCATED ADJACENT TO POWER POLE #1. POLE TO HAVE TWO 10 FOOT LONG 1/2" WHIPS WITH PULL WIRE. DO NOT PLACE ANY OTHER WIRE IN POLE.
 - 6 COMMERCIAL COUNTER POWERPOLE WITH TWO DUPLEX OUTLETS PRE-WIRED ON POLE FOR CONNECTION TO INDIVIDUAL CIRCUITS IN AUTOZONE FURNISHED QUICK CONNECTORS.
- 1/8" = 1'-0" NOTE: POWER POLES #1 & 5 WILL BE FURNISHED BY AUTOZONE AND MUST BE TRIMMED TO FIT IN THE FIELD. EPP01

- 9 POWER POLE LEGEND
1. CONNECT THE APPROPRIATE OWNER FURNISHED PREWIRED FEMALE FLEXIBLE QUICK CONNECTOR TO THE CIRCUIT(S) IN THE JUNCTION BOX SERVING EACH OF THE PODS. FOR DETAILED WIRING INSTRUCTION, SEE ADDITIONAL INFORMATION IN WIRING DIAGRAMS ON THIS SHEET. COIL UP THE FLEXIBLE CONDUIT AND WIRE TIE TO THE CLOSEST BAR JOIST.

- MISC: Junction Box
 - P: 10' Long Power Pole
 - P: Commercial Counter Power Pole With (2) Duplex Receptacle
 - P: Parts Pod Power Pole With (1) Duplex Receptacle
 - P: Test Station Power Pole With (1) Simplex Receptacle & (1) Duplex Receptacle
 - P: Checkout Counter Power Pole With (1) Duplex Receptacle
- PW: 3#12, 1/2" EMT Conduit
 PW: 5#12, 3/4" EMT Conduit
 PW: 9#12, 3/4" EMT Conduit

- 6.0 EA
- 1.0 EA
- 1.0 EA
- 2.0 EA
- 1.0 EA
- 1.0 EA
- 308.2 FT
- 124.6 FT
- 122.0 FT

1/8" = 1'-0" 1 POWER POLE & JUNCTION BOX LOCATIONS



1/8" = 1'-0" 2 CHECK OUT POWER POLE #2

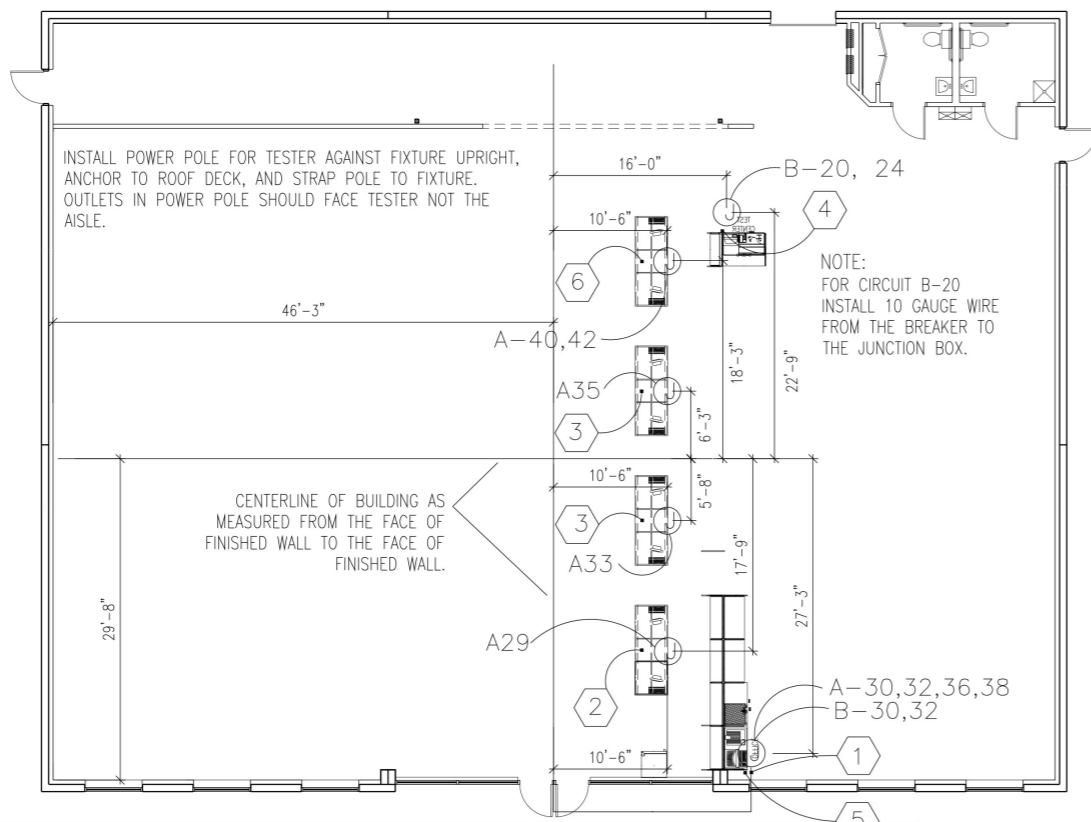
1/8" = 1'-0" 3 PARTS POD POWER POLE #3

1/8" = 1'-0" 4 TESTER POWER POLE #4

1/8" = 1'-0" 5 COMMERCIAL COUNTER POWER POLE #5

1/8" = 1'-0" 11 OFFICE AREA POWER PLAN

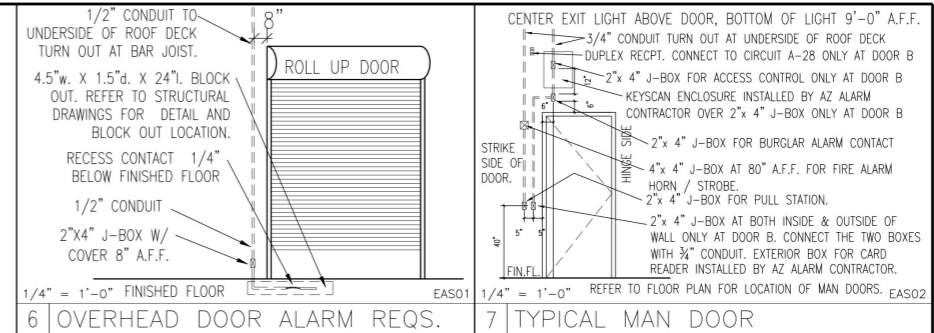
REVISIONS	4	5	6
1	2	3	
AutoZone Store No. 5313 8209 LIBERTY RD BALTIMORE MD 21244 CONDUIT / POWER AND DATA PLANS			
ENGINEER: DANNY E. DOSS P.E. 132 Kelley Drive Rogers, Arkansas 72756 TEL: (479) 631-1712 FAX: (479) 631-1854 For Bidding & Contractor Information Contact: Dodge Data & Analytics, Tel. 1-844-326-3826 ext 9429 Cindy.searcy@construction.com			
05/02/22			
65W2-R			
E-2			



- P: Duplex Receptacle
- MISC: Junction Box
- P: Simplex Receptacle
- PW: 3#12, 1/2" EMT Conduit

- 2.0 EA
- 2.0 EA
- 4.0 EA
- 87.6 FT

The following statement for all Electrical drawings:
 "I certify that these documents were prepared by or approved by me and that I am a duly licensed professional engineer under the laws of the State of Maryland,
 License Number 14850, expiration date 03-28-2024."

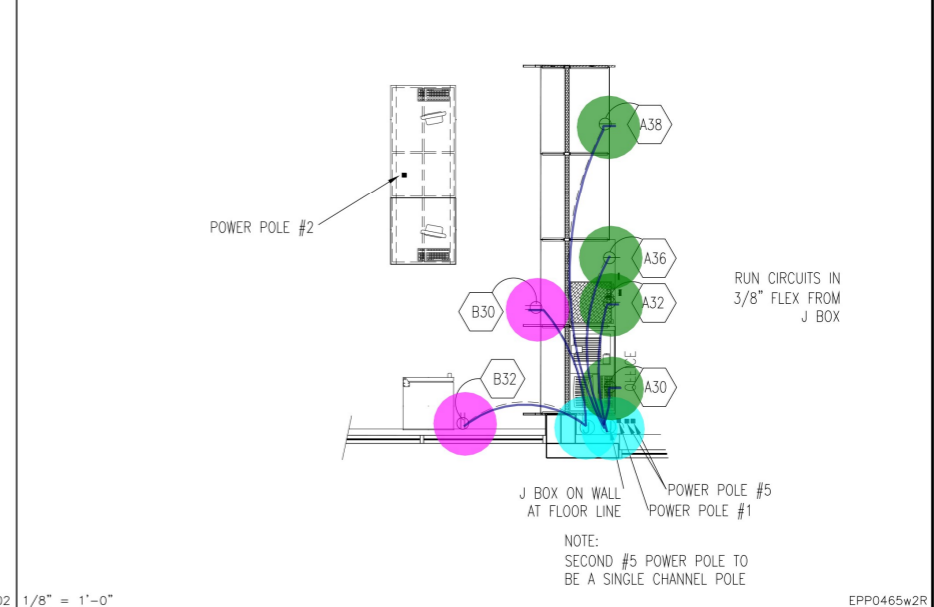


- OVERHEAD DOOR ALARM REQS. TYPICAL MAN DOOR
- LABEL ALL CIRCUITS ON J-BOXES AND ALL OUTLETS WITH MULTIPLE CIRCUITS.
 - ALL WIRING ON FLOOR UNDER COUNTERS SHALL BE IN 3/8" FLEXIBLE CONDUIT.
 - RUN ALL CONDUIT AND CABLES UNDER AND NOT THROUGH SHELF SUPPORTS.
 - DO NOT PERMANENTLY ATTACH OUTLET BOXES OR FLEX CONDUIT TO FLOOR.
 - MOUNT OUTLETS IN KICKPLATES AFTER OWNER'S FIXTURES HAVE BEEN INSTALLED.
 - INSTALL JUNCTION BOX AT LOCATIONS SHOWN FOR POWER. INSTALL AUTOZONE FURNISHED FLEXIBLE QUICK CONNECTORS TO EACH BOX INDICATED POWER POLE SCHEDULE.
 - AUTOZONE'S CONTRACTOR CROSSCOM WILL INSTALL CAT. 5 CABLE FOR DATA AND PHONE LINES. IN ADDITION TO TAGGING THE ENDS OF ALL CABLES, CROSSCOM WILL CRIMP THE ENDS OF ALL CABLES WITH A 8 PIN RJ-45 CONNECTOR.
 - ALL CIRCUITS OVER 100 FEET IN LENGTH SHALL BE RUN WITH #10 AWG.
 - PROVIDE 2 PULL WIRES IN ALL EMPTY CONDUITS.
 - LOCATE ALL POWER POLES AFTER FIXTURES ARE IN PLACE.

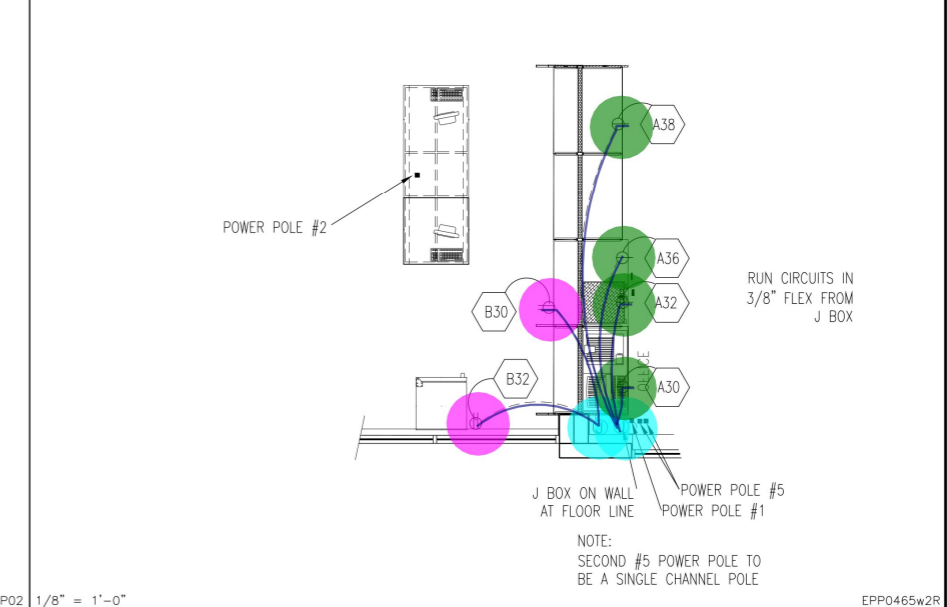
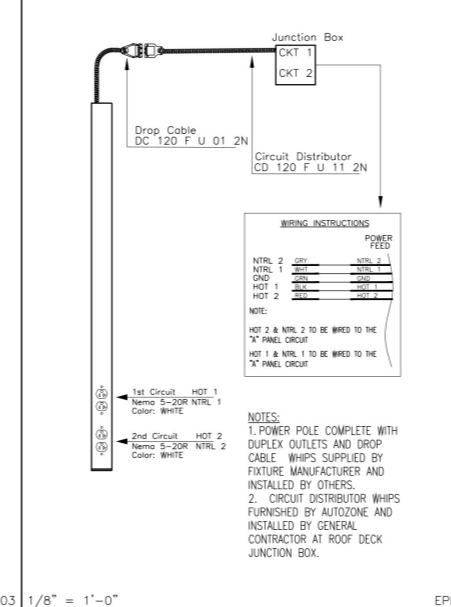
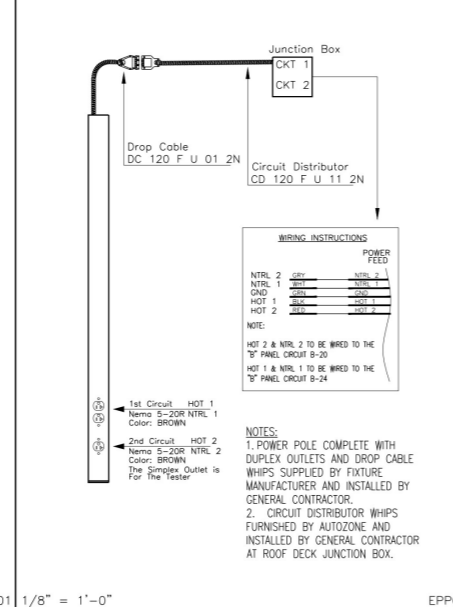
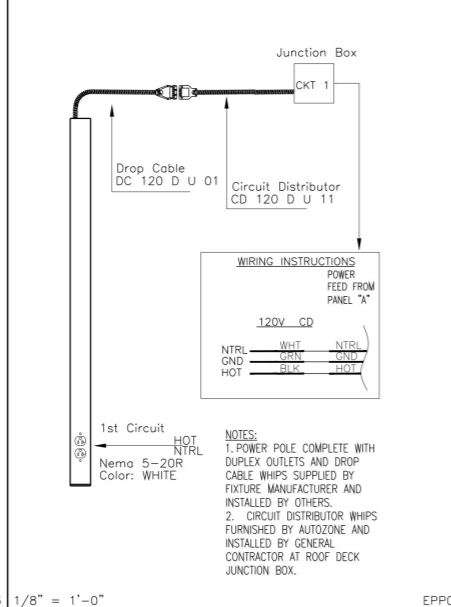
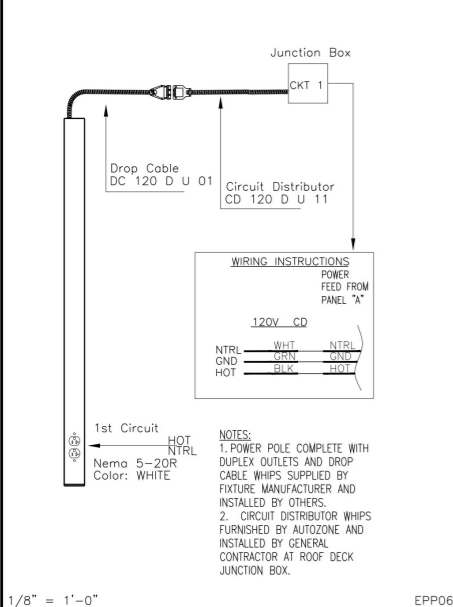
- GENERAL WIRING AND POWER NOTES
- OFFICE AREA POWER POLE - ALL CIRCUITS ARE HARD WIRED TO POLE FROM JUNCTION BOX WITH FLEXIBLE CONDUIT.
 - CHECKOUT COUNTER POWER POLE WITH ONE DUPLEX OUTLET PRE-WIRED ON POLE FOR CONNECTION TO INDIVIDUAL CIRCUITS IN AUTOZONE FURNISHED QUICK CONNECTOR.
 - PARTS POD POWER POLE WITH ONE DUPLEX OUTLET PRE-WIRED ON POLE FOR CONNECTION TO AUTOZONE FURNISHED QUICK CONNECTOR.
 - TEST STATION POWER POLE WITH ONE SIMPLEX OUTLET AND ONE DUPLEX OUTLET PRE-WIRED ON POLE FOR CONNECTION TO INDIVIDUAL CIRCUITS IN AUTOZONE FURNISHED QUICK CONNECTOR. ATTACH TOP OF POWER POLE TO ROOF DECK AND STRAP POLE TO THE FACE OF THE FIXTURE UPRIGHT. BOTTOM OF POLE SHOULD BE A MINIMUM OF 30" ABOVE FLOOR AND OUTLETS SHOULD FACE THE TEST STATION.
 - CAMERA SYSTEMS POWER POLE TO BE LOCATED ADJACENT TO POWER POLE #1. POLE TO HAVE TWO 10 FOOT LONG 1/2" WHIPS WITH PULL WIRE. DO NOT PLACE ANY OTHER WIRE IN POLE.
 - COMMERCIAL COUNTER POWERPOLE WITH TWO DUPLEX OUTLETS PRE-WIRED ON POLE FOR CONNECTION TO INDIVIDUAL CIRCUITS IN AUTOZONE FURNISHED QUICK CONNECTORS.

- POWER POLE LEGEND
- CONNECT THE APPROPRIATE OWNER FURNISHED PREWIRED FEMALE FLEXIBLE QUICK CONNECTOR TO THE CIRCUIT(S) IN THE JUNCTION BOX SERVING EACH OF THE PODS. FOR DETAILED WIRING INSTRUCTION, SEE ADDITIONAL INSTRUCTION IN WIRING DIAGRAMS ON THIS SHEET. COIL UP THE FLEXIBLE CONDUIT AND WIRE TIE TO THE CLOSEST BAR JOIST.
 - POSITION NON-POD POWER POLES AFTER FIXTURES ARE IN PLACE, ANCHOR ALL POLES PER MANUFACTURER'S INSTRUCTIONS. MAKE FINAL CONNECTIONS THROUGH FLEX CONDUIT TO JUNCTION BOXES AT ROOF DECK. POWER POLES FOR THE PODS WILL COME WITH A MALE QUICK CONNECTOR AND WILL BE PLUGGED IN BY OWNER.
 - AT THE BOTTOM OF THE OFFICE POWER POLE MAKE 1" FLEX CONNECTIONS TO JUNCTION BOXES AND FROM THE JUNCTION BOX MAKE CONNECTIONS USING 3/8" FLEX TO EACH OF THE DEVICES.

- POWER POLE NOTES

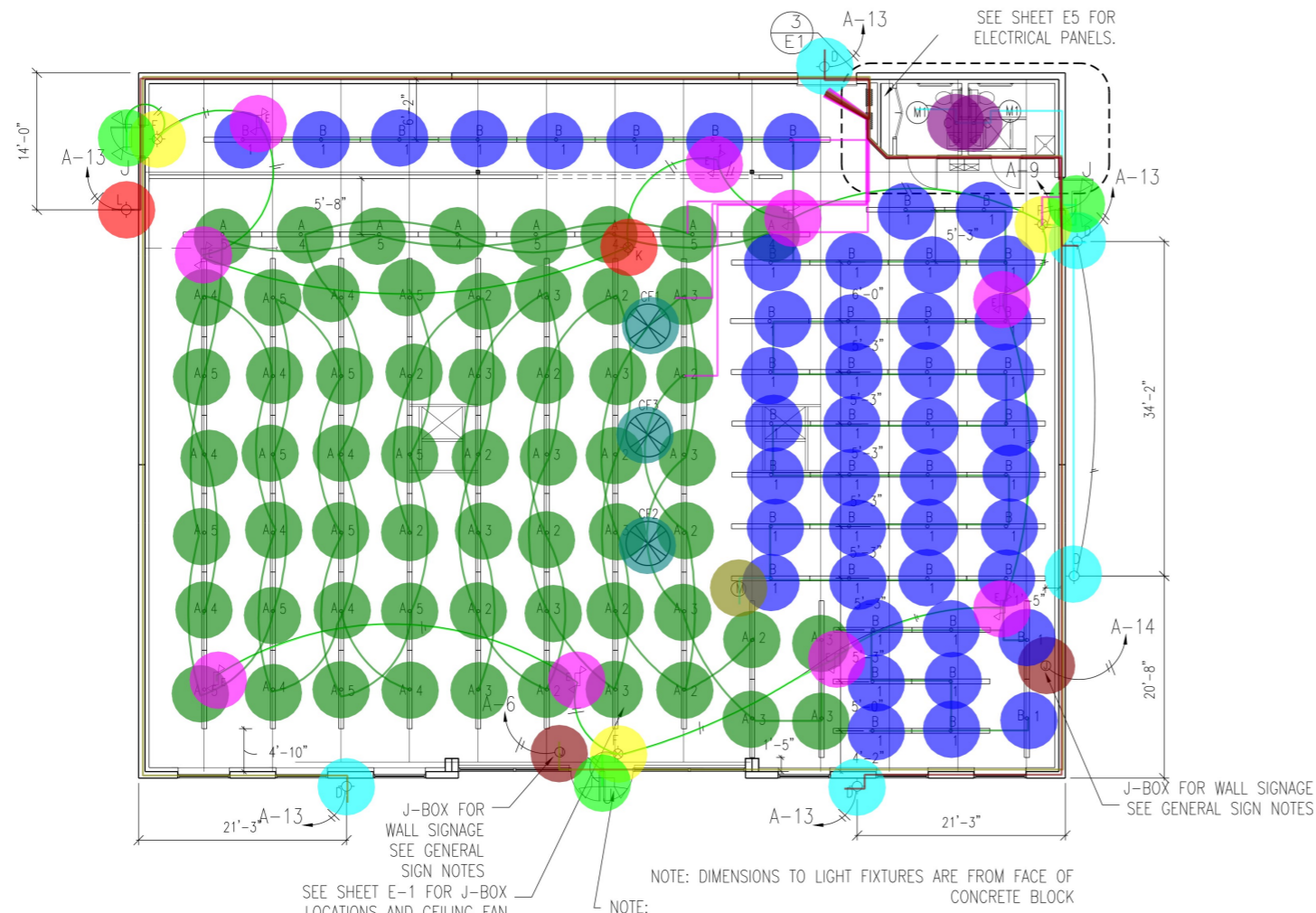


1 POWER POLE & JUNCTION BOX LOCATIONS



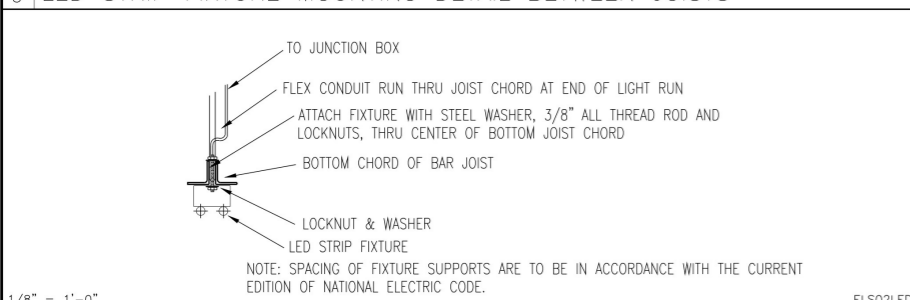
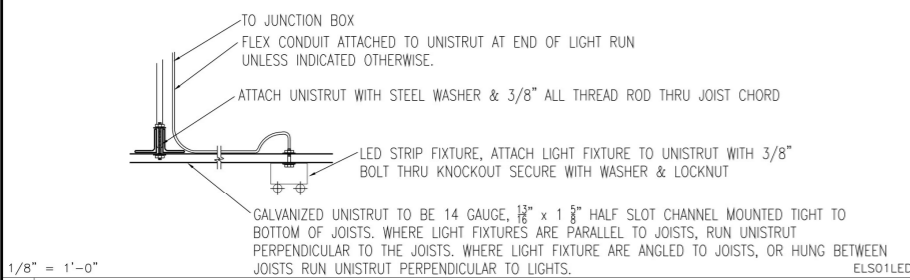
2 CHECK OUT POWER POLE #2 3 PARTS POD POWER POLE #3 4 TESTER POWER POLE #4 5 COMMERCIAL COUNTER POWER POLE #6 11 OFFICE AREA POWER PLAN

REVISIONS	4	5	6
1	2	3	
AutoZone Store No. 5313 8209 LIBERTY RD BALTIMORE MD 21244 CONDUIT / POWER AND DATA PLANS			
ENGINEER: DANNY E. DOSS P.E. 132 Kelley Drive Rogers, Arkansas 72756 TEL: (479) 631-1712 FAX: (479) 631-1854 For Bidding & Contractor Information Contact: Dodge Data & Analytics, Tel. 1-844-326-3826 ext 9429 Cindy.searcy@construction.com			
05/02/22			
65W2-R			
E-2			



CONTRACTOR SHALL COORDINATE EXACT LOCATIONS OF WALL PACKS AND SIGNS WITH ARCHITECTURAL A2 PLAN. JUNCTION BOXES FOR EXTERIOR WALL SIGNS SHALL BE LOCATED HORIZONTALLY AT THE MIDPOINT OF THE SIGN AND VERTICALLY 4" UP FROM THE BOTTOM OF THE SIGN.

1/8" = 1'-0"
1 LIGHTING PLAN



- A. ALL DIMENSIONS ARE FROM FACE OF CONCRETE BLOCK WALLS AND TO THE CENTERS OR ENDS OF LIGHT FIXTURES.
 - B. INSTALL OCCUPANCY SENSOR IN BATHROOMS TO CONTROL LIGHT / FAN.
 - C. POSITION ALL CONDUIT TO BE TIGHT AGAINST THE BOTTOM OF THE TOP CHORD OF THE BAR JOIST, AND IN COMPLIANCE WITH THE CURRENT VERSION OF THE NATIONAL ELECTRIC CODE. CONDUIT SHALL BE INSTALLED EITHER PARALLEL OR PERPENDICULAR TO THE DECK RIBS. USE FLEX CONDUIT FROM J-BOX TO LIGHT FIXTURE.
 - D. NO INTERIOR LIGHTING BRANCH CIRCUIT SHALL BE INSTALLED IN A MULTI-WIRE BRANCH CIRCUIT CONFIGURATION. NEUTRAL CONDUCTORS SHALL NOT BE SHARED BETWEEN DIFFERENT CIRCUITS.
 - E. INSTALL 8'-0" LONG LED STRIP FIXTURES TO THE BOTTOM OF JOISTS, EITHER CENTERED ON JOIST BOTTOM OR PERPENDICULAR ACROSS MULTIPLE JOISTS. WHERE LIGHT FIXTURES ARE TO BE PLACED AT AN ANGLE TO THE JOISTS OR ARE TO BE LOCATED BETWEEN JOISTS, ATTACH FIXTURE TO CONTINUOUS RUNS OF GALVANIZED UNISTRUT WHICH HAVE BEEN SECURELY ANCHORED TO THE JOISTS.
 - F. EXIT AND EMERGENCY LIGHTS NOT MOUNTED ON WALLS OR JOISTS SHALL BE MOUNTED ON UNISTRUT BETWEEN JOISTS.
 - G. FRONT DOOR EXIT SIGN: SURFACE MOUNT ON WALL 12'-2" ABOVE FINISHED FLOOR TO BOTTOM OF FIXTURE MAN DOOR EXIT SIGN: SURFACE MOUNT ON WALL 9'-0" ABOVE FINISHED FLOOR TO BOTTOM OF FIXTURE. ALL OTHER EXIT SIGNS: MOUNT FIXTURE TO BOTTOM OF JOIST.
 - H. ALL NON-SWITCHED LIGHTING CIRCUITS TO BE CONTROLLED BY AUTOMATIC LIGHTING CONTROL PANEL. SEE LIGHTING CONTROL DIAGRAM FOR DETAILS AND REQUIREMENTS.
- 1/8" = 1'-0"
7 LIGHTING NOTES

- Junction Box
- LB- 3#8, 3/4" EMT Conduit
- LB- 3#8, 3/4" EMT Conduit
- LB- 3#12, 1/2" EMT Conduit
- LF: A
- LF: B
- LF: C
- LF: CF2
- LF: D
- LF: E
- LF: F
- LF: J
- LF: K
- LF: L
- LF: M
- LH- 3#8, 3/4" EMT Conduit
- LH- 3#10, 1/2" EMT Conduit
- LH- 3#12, 1/2" EMT Conduit

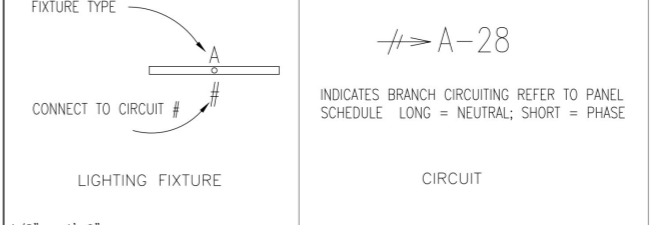
2.0 EA	D-Series Size 1 Luminaire DSKW1 LED 60C 1000 40K 13M MVOLT	AUTOZONE	209 WATT	SEE CIVIL SHEETS FOR POLE AND FIXTURE LOCATIONS
276.4 FT	MOTION SENSOR-10 MINUTE ON LSXR-50-HL	AUTOZONE	-----	J-BOX HORIZONTAL MOUNT TO SIDE OF LIGHT FIXTURE INSTALL AISLEWAY LENS #50

60.0 EA	8' LED STRIP 42 WATTS INPUT	AUTOZONE	4 - 10.5 WATT T8 - 4' LED TUBE	SEE PLAN FOR LOCATIONS
46.0 EA	8' LED STRIP 21 WATTS INPUT	AUTOZONE	2 - 10.5 WATT T8 - 4' LED TUBE	SEE PLAN FOR LOCATIONS
2.0 EA	4' LED STRIP 10.5 WATTS INPUT WALL LIGHT	AUTOZONE	1 - 10.5 WATT T8 - 4' LED TUBE	SURFACE MOUNTED @ 6'-8" ABOVE FINISHED FLOOR CENTER ON WALL
3.0 EA	D-Series Size 1 Luminaire DSKW1 LED 10C 1000 40K 13M MVOLT	AUTOZONE	40 WATT	MOUNT TOP OF FIXTURE AT THE SAME ELEVATION AS TOP OF THE STOREFRONT
5.0 EA	EMERGENCY LIGHT WITH BATTERY BACKUP	AUTOZONE	INCLUDED WITH FIXTURE	MOUNTED TO BOTTOM OF BAR JOIST OR UNISTRUT
9.0 EA	EXIT SIGN WITH BATTERY BACKUP	AUTOZONE	INCLUDED WITH FIXTURE	SEE PLAN FOR LOCATIONS AND MOUNTING INFORMATION
3.0 EA	GOHAM 8" LED DOWN LIGHT EVO R 40/30 BAR 120 TRW	AUTOZONE	49 WATT	MOUNTED IN SOFFIT SEE PLAN FOR LOCATIONS
3.0 EA	EXTERIOR EMERGENCY LIGHT WITH TWO HEADS	AUTOZONE	INCLUDED WITH FIXTURE	REMOTE HEAD MOUNTED OUTSIDE ABOVE DOOR WIRE TO EXIT LIGHT FIXTURE
3.0 EA	EXIT SIGN WITH BATTERY BACKUP	AUTOZONE	INCLUDED WITH FIXTURE	MOUNTED TO BOTTOM OF BAR JOIST OR UNISTRUT
1.0 EA	D-Series Size 1 Luminaire DSKW1 LED 10C 530 40K 13M MVOLT	AUTOZONE	20 WATT	MOUNT TOP OF FIXTURE AT THE SAME ELEVATION AS TOP OF THE STOREFRONT
1.0 EA	4' LED STRIP 21 WATTS INPUT	AUTOZONE	2 - 10.5 WATT T8 - 4' LED TUBE	SEE PLAN FOR LOCATIONS
1.0 EA	4' LED STRIP 10.5 WATTS INPUT	AUTOZONE	1 - 10.5 WATT T8 - 4' LED TUBE	SEE PLAN FOR LOCATIONS
1.0 EA	MOTION SENSOR FOR ALC PANEL	AUTOZONE	-----	J-BOX HORIZONTAL BOTTOM OF JOIST OR UNISTRUT
203.1 FT	OCCUPANCY SENSOR-CMR-9	AUTOZONE	-----	RESTROOM CEILING - CONNECT TO FAN & LIGHT

SCHEDULE NOTES:
ALL WILL BE UTILIZED ON EACH PROJECT SEE FLOOR PLAN ON THIS SHEET FOR THE ITEMS THAT APPLY TO THIS PROJECT.
FINISHED LED STRIP FIXTURES AND MOTION SENSORS SHOWN IN SCHEDULE ABOVE AND CALLED FOR ON THE PLAN. LISTED ON THIS SHEET.
#2 WILL BE USED IN HUB AND MEGA HUB STORES ONLY.

1/8" = 1'-0"
8 LIGHTING FIXTURE SCHEDULE

The following statement for all Electrical drawings:
"I certify that these documents were prepared by or approved by me and that I am a duly licensed professional engineer under the laws of the State of Maryland, License Number 14850, expiration date 03-28-2024."



SYMBOL	DESCRIPTION	SUPPLIED	LAMPS	MOUNTING
A	8' LED STRIP 42 WATTS INPUT	AUTOZONE	4 - 10.5 WATT T8 - 4' LED TUBE	SEE PLAN FOR LOCATIONS
B	8' LED STRIP 21 WATTS INPUT	AUTOZONE	2 - 10.5 WATT T8 - 4' LED TUBE	SEE PLAN FOR LOCATIONS
C	4' LED STRIP 10.5 WATTS INPUT WALL LIGHT	AUTOZONE	1 - 10.5 WATT T8 - 4' LED TUBE	SURFACE MOUNTED @ 6'-8" ABOVE FINISHED FLOOR CENTER ON WALL
D	D-Series Size 1 Luminaire DSKW1 LED 10C 1000 40K 13M MVOLT	AUTOZONE	40 WATT	MOUNT TOP OF FIXTURE AT THE SAME ELEVATION AS TOP OF THE STOREFRONT
E	EMERGENCY LIGHT WITH BATTERY BACKUP	AUTOZONE	INCLUDED WITH FIXTURE	MOUNTED TO BOTTOM OF BAR JOIST OR UNISTRUT
F	EXIT SIGN WITH BATTERY BACKUP FOR REMOTE EXIT EMERGENCY HEAD	AUTOZONE	INCLUDED WITH FIXTURE	SEE PLAN FOR LOCATIONS AND MOUNTING INFORMATION
G	GOHAM 8" LED DOWN LIGHT EVO R 40/30 BAR 120 TRW	AUTOZONE	49 WATT	MOUNTED IN SOFFIT SEE PLAN FOR LOCATIONS
J	EXTERIOR EMERGENCY LIGHT WITH TWO HEADS	AUTOZONE	INCLUDED WITH FIXTURE	REMOTE HEAD MOUNTED OUTSIDE ABOVE DOOR WIRE TO EXIT LIGHT FIXTURE
K	EXIT SIGN WITH BATTERY BACKUP	AUTOZONE	INCLUDED WITH FIXTURE	MOUNTED TO BOTTOM OF BAR JOIST OR UNISTRUT
L	D-Series Size 1 Luminaire DSKW1 LED 10C 530 40K 13M MVOLT	AUTOZONE	20 WATT	MOUNT TOP OF FIXTURE AT THE SAME ELEVATION AS TOP OF THE STOREFRONT
M	4' LED STRIP 21 WATTS INPUT	AUTOZONE	2 - 10.5 WATT T8 - 4' LED TUBE	SEE PLAN FOR LOCATIONS
N	4' LED STRIP 10.5 WATTS INPUT	AUTOZONE	1 - 10.5 WATT T8 - 4' LED TUBE	SEE PLAN FOR LOCATIONS
M	MOTION SENSOR FOR ALC PANEL	AUTOZONE	-----	J-BOX HORIZONTAL BOTTOM OF JOIST OR UNISTRUT
M1	OCCUPANCY SENSOR-CMR-9	AUTOZONE	-----	RESTROOM CEILING - CONNECT TO FAN & LIGHT

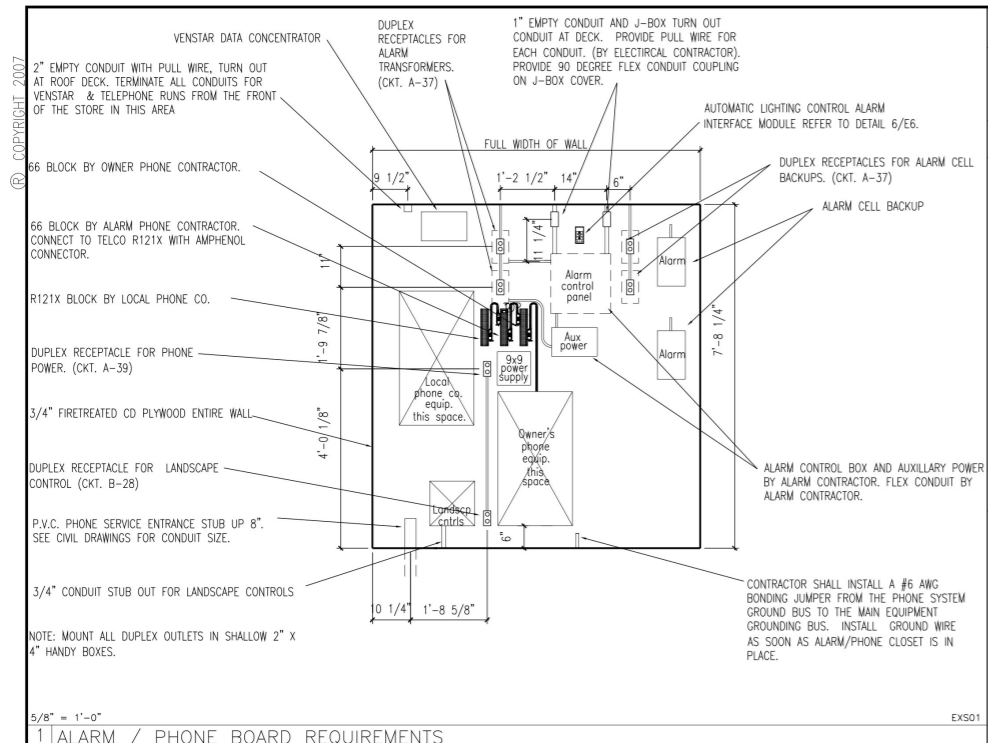
AutoZone Store No. 5313
8209 LIBERTY RD
BALTIMORE MD 21244
LIGHTING PLANS AND DETAILS

ENGINEER: DANNY E. DOSS P.E.
132 Kelley Drive
Rogers, Arkansas 72756
TEL: (479) 631-1712 FAX: (479) 631-1854
For Bidding & Contractor Information Contact:
Dodge Data & Analytics, Tel. 1-844-326-3826 ext 9429
Cindy.searcy@construction.com

REVISIONS

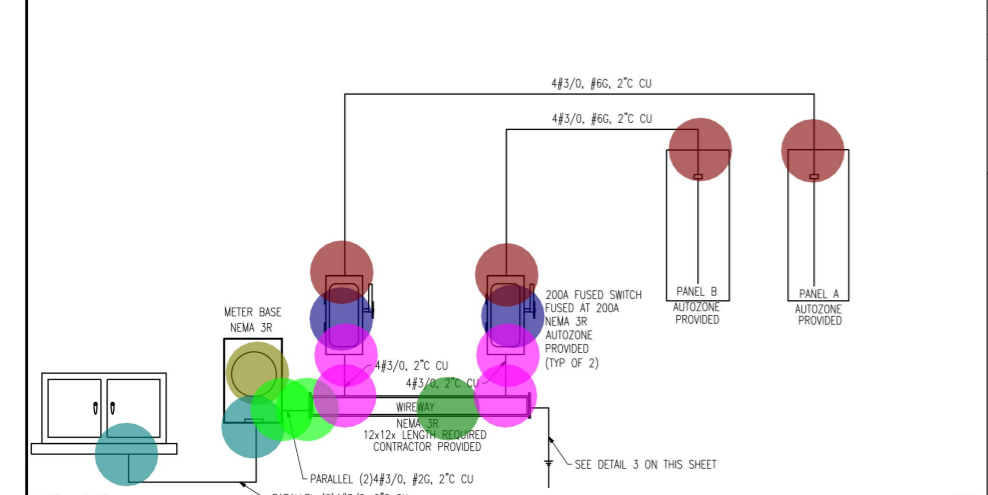
REV#	DATE	DESCRIPTION
1		
2		
3		
4		
5		
6		

05/02/22
65W2-R
E-3



1 ALARM / PHONE BOARD REQUIREMENTS

COORDINATE ALL WORK WITH SERVING UTILITY COMPANY REQUIREMENTS AND MAKE CONTACT WITH LOCAL REPRESENTATIVE PRIOR TO BID AND/OR CONSTRUCTION. PRIOR TO BID, NOTIFY AUTOZONE AND THIS ENGINEER, IN WRITING, OF ANY CHANGES REQUIRED.



2 SCHEMATIC ONE LINE - ELECTRICAL SERVICE

PANEL A

ROOM MOUNTING FLUSH
FED FROM DISCON A
NOTE

VOLTS 208Y/120V 3P 4W
BUS AMPS 225
NEUTRAL 100%

AIC 10,000
MLO
LUGS STANDARD

CKT #	BREAKER TRIP/POLES	CIRCUIT DESCRIPTION	LOAD VA			FEEDER RACEWAY AND CONDUCTORS
			A	B	C	
1	200/3	WORK LIGHTING	1,100			2#12.#12G.1/2"C
3	200/3	WORK LIGHTING		720		2#12.#12G.1/2"C
5	200/3	WORK LIGHTING			768	2#10.#10G.1/2"C
7	-/1	SPACE				
9	200/3	EXIT / EMERGENCY LIGHTING		50		2#12.#12G.1/2"C
11	-/1	SPACE				
13	200/3	EXTERIOR BUILDING LIGHTING	194			2#12.#12G.1/2"C
15	200/3	NITE LIGHTING		209		2#10.#10G.1/2"C
17	200/3	NITE LIGHTING		209		2#10.#10G.1/2"C
19	200/3	NITE LIGHTING		209		2#12.#12G.1/2"C
21	-/1	SPACE				
23	-/1	SPACE				
25	-/1	SPACE				
27	200/3	WATER HEATER		1,500		2#12.#12G.1/2"C
29	200/3	BACK OUT REG & PRN		1,920		2#12.#12G.1/2"C
31	200/3	TV MONITOR	300			2#12.#12G.1/2"C
33	200/3	COOD #1		1,920		2#12.#12G.1/2"C
35	200/3	COOD #2		800		2#12.#12G.1/2"C
37	200/3	ALARM		720		2#12.#12G.1/2"C
39	200/3	ALARM CO		720		2#12.#12G.1/2"C
41	-/1	SPACE				
42	-/1	SPACE				

TOTAL CONNECTED VA BY PHASE: 8,203 7,921 9,117

	CONN VA	CALC VA		CONN VA	CALC VA
LIGHTING	8,911	11,139	(125%)		
RECEPTACLES	13,600	11,800	(50%>10)		
CONTINUOUS	2,730	3,410	(125%)		
TOTAL LOAD		26,349			
BALANCED 3-PHASE LOAD				73.2 A	

PANEL B

ROOM MOUNTING FLUSH
FED FROM DISCON B
NOTE

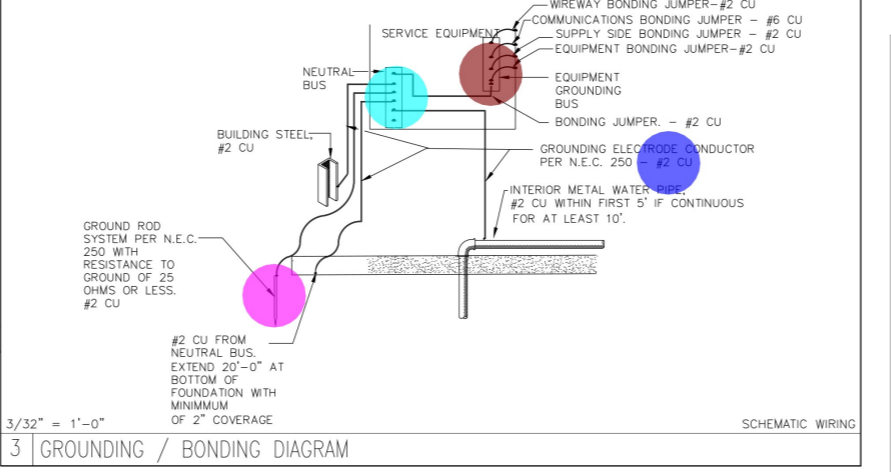
VOLTS 208Y/120V 3P 4W
BUS AMPS 225
NEUTRAL 100%

AIC 10,000
MLO
LUGS STANDARD

CKT #	BREAKER TRIP/POLES	CIRCUIT DESCRIPTION	LOAD VA			FEEDER RACEWAY AND CONDUCTORS
			A	B	C	
1	50/3	RTU-1	3,840			3#8.#10G.3/4"C
3	-/1	SPACE		3,840		
5	-/1	SPACE				
7	-/1	SPACE				
9	-/1	SPACE				
11	-/1	SPACE				
13	200/3	MAINT & OX-BLUE RECEPTACLE	720			2#12.#12G.1/2"C
15	200/3	BATTERY CHARGER		1,490		2#12.#12G.1/2"C
17	200/3	BATTERY CHARGER			1,490	2#12.#12G.1/2"C
19	200/3	BATTERY CHARGER		1,490		2#12.#12G.1/2"C
21	200/3	BATTERY CHARGER			1,490	2#12.#12G.1/2"C
23	200/3	BATTERY CHARGER		1,490		2#12.#12G.1/2"C
25	200/3	ALC PANEL	480			2#12.#12G.1/2"C
27	-/1	SPACE				
29	200/3	BREAK ROOM FRIDGE		400		2#12.#12G.1/2"C
31	-/1	SPACE				
33	-/1	SPACE				
35	-/1	SPACE				
37	-/1	SPACE				
39	-/1	SPACE				
41	-/1	SPACE				

TOTAL CONNECTED VA BY PHASE: 16,100 13,570 15,130

	CONN VA	CALC VA		CONN VA	CALC VA
LARGEST MOTOR	11,500	2,880	(25%)		
MOTORS	30,700	30,700	(100%)		
RECEPTACLES	11,000	10,500	(50%>10)		
NONCONTINUOUS	3,140	3,140	(100%)		
TOTAL LOAD		47,200			
BALANCED 3-PHASE LOAD				131 A	



3 GROUNDING / BONDING DIAGRAM

BRANCH CIRCUITS TO BE IDENTIFIED PER NEC 210.5.
FMC TO BE PER NEC 348.
RECEPTACLES, CORD CONNECTORS & ATTACHMENT PLUGS TO BE PER NEC 406.
SWITCHBOARDS, SWITCH GEAR & PANEL BOARDS TO BE PER NEC 408.
LIGHTING TO BE PER NEC 410.
PANELS AND THEIR CIRCUITS TO BE IDENTIFIED PER NEC SECTION 408.4 (A) & (B)
PANELS TO BE IDENTIFIED FOR ARC FLASH HAZARD PER NEC SECTION 110.16.

INSERT 20 AMP HIGH MAGNETIC BREAKER IN CIRCUIT B-20. BREAKER WILL COME WITH A YELLOW STICKER TO BE LEFT IN PLACE.

- B: 3P/50A Breaker 1.0 EA ●
- B: 3P/60A Breaker 1.0 EA ●
- B: 1P/20A Breaker 42.0 EA ●
- DIST: 12x12 Wireway, NEMA 3R 1.0 EA ●
- DIST: Utility Meter Base, NEMA 3R 1.0 EA ●
- DS: 3P/200A Fused Disconnect Switc... 2.0 EA ●
- GND: #2 CU Grounding Conductor (2... 1.0 EA ●
- GND: 5/8" x 10' CU Clad Ground Rod 1.0 EA ●
- GND: Equipment Grounding Bus 1.0 EA ●
- GND: Neutral Bus 1.0 EA ●
- LUGS: (2) 4#3/0 2.0 EA ●
- LUGS: (2) 4#3/0, #2 2.0 EA ●
- LUGS: 4#3/0 4.0 EA ●
- LUGS: 4#3/0, #6 4.0 EA ●
- Panel A: 225A, 120/208V, 3Ph, 4W, M... 1.0 EA ●
- Panel B: 225A, 120/208V, 3Ph, 4W, M... 1.0 EA ●

LOAD TOTALS

CKT #	BREAKER TRIP/POLES	CIRCUIT DESCRIPTION	LOAD VA			FEEDER RACEWAY AND CONDUCTORS
			A	B	C	
1	200/3	FUSED DISCONNECT DISCON A	8,203	7,921	9,117	4#3/0,2"C
2	200/3	FUSED DISCONNECT DISCON B	16,100	13,570	15,130	4#3/0,2"C
TOTAL CONNECTED VA BY PHASE			24,303	21,491	24,247	
			CONN VA	CONN VA	CONN VA	
LIGHTING			8,911	11,139		(125%)
LARGEST MOTOR			11,500	2,880		(25%)
MOTORS			30,700	30,700		(100%)
RECEPTACLES			24,600	17,300		(50%>10)
CONTINUOUS			2,730	3,410		(125%)
NONCONTINUOUS			3,140	3,140		(100%)
TOTAL LOAD				88,569		
BALANCED 3-PHASE LOAD					190 A	

ENGINEER: DANNY E. DOSS P.E.
132 Kelley Drive
Rogers, Arkansas 72756
TEL: (479) 631-1712 FAX: (479) 631-1854
For Bidding & Contractor Information Contact:
Dodge Data & Analytics, Tel. 1-844-326-3826 ext 9429
Cindy.searcy@construction.com

05/02/22
65W2-R
E-4

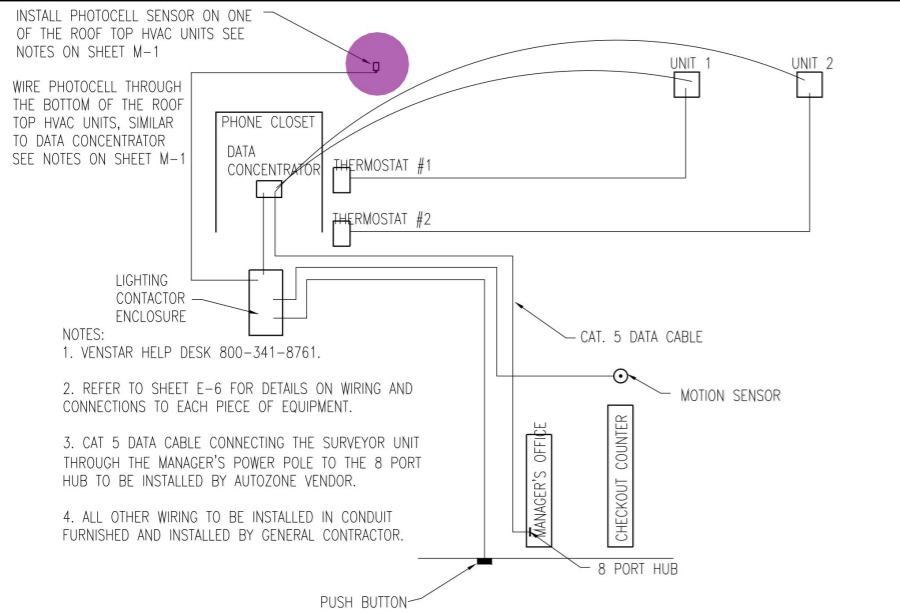
The following statement for all Electrical drawings:
"I certify that these documents were prepared by or approved by me and that I am a duly licensed professional engineer under the laws of the State of Maryland, License Number 14850, expiration date 03-28-2024."

REVISIONS

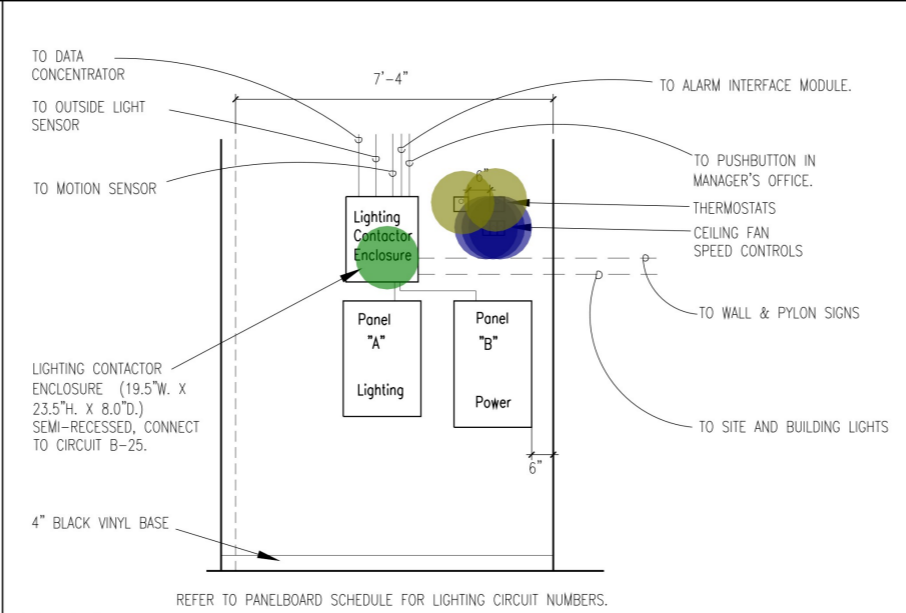
REV1	REV2	REV3	REV4	REV5	REV6
1	2	3	4	5	6

AutoZone Store No. 5313
8209 LIBERTY RD
BALTIMORE MD 21244
PANELBOARD / 1-LINE DIAGRAMS AND DETAILS

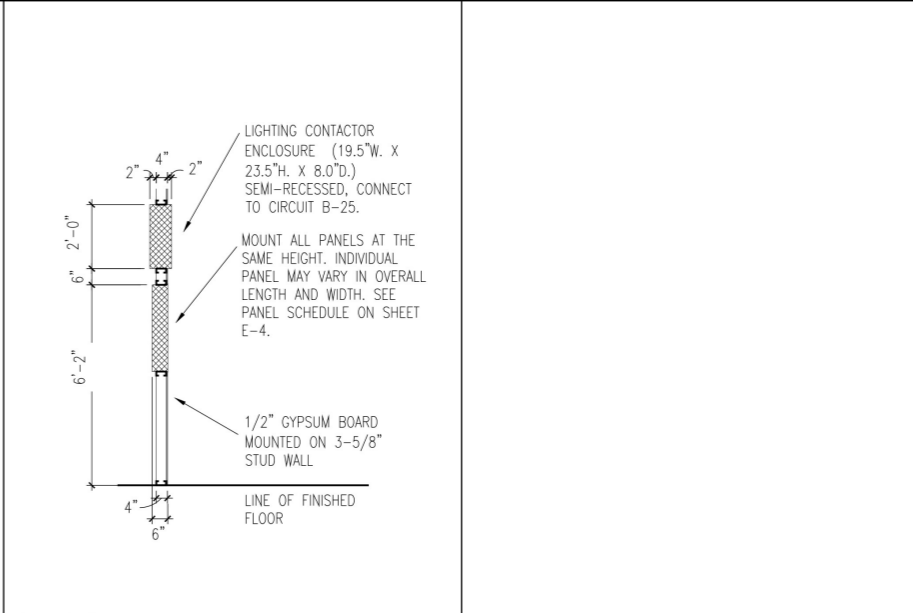
© COPYRIGHT 2007



1 | SCHEMATIC WIRING DIAGRAM - VENSTAR / LIGHTING CONTROL PANEL

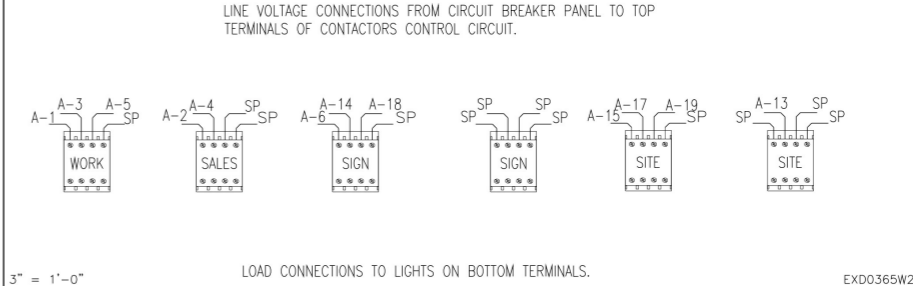


2 | PANELBOARD - DIAGRAM



3 | PANELBOARD - MOUNTING HEIGHT SECTION

REVISIONS	
1	REV1
2	REV2
3	REV3
4	REV4
5	REV5
6	REV6



5 | LIGHTING CONTROL SCHEDULE

AutoZone Store No. 5313
 8209 LIBERTY RD
 BALTIMORE MD 21244
 LIGHTING CONTROL PANEL AND DETAILS

ENGINEER: DANNY E. DOSS P.E.
 132 Kelley Drive
 Rogers, Arkansas 72756
 TEL: (479) 631-1712 FAX: (479) 631-1854
 For Bidding & Contractor Information Contact:
 Dodge Data & Analytics. Tel. 1-844-326-3826 ext 9429
 Cindy.searcy@construction.com

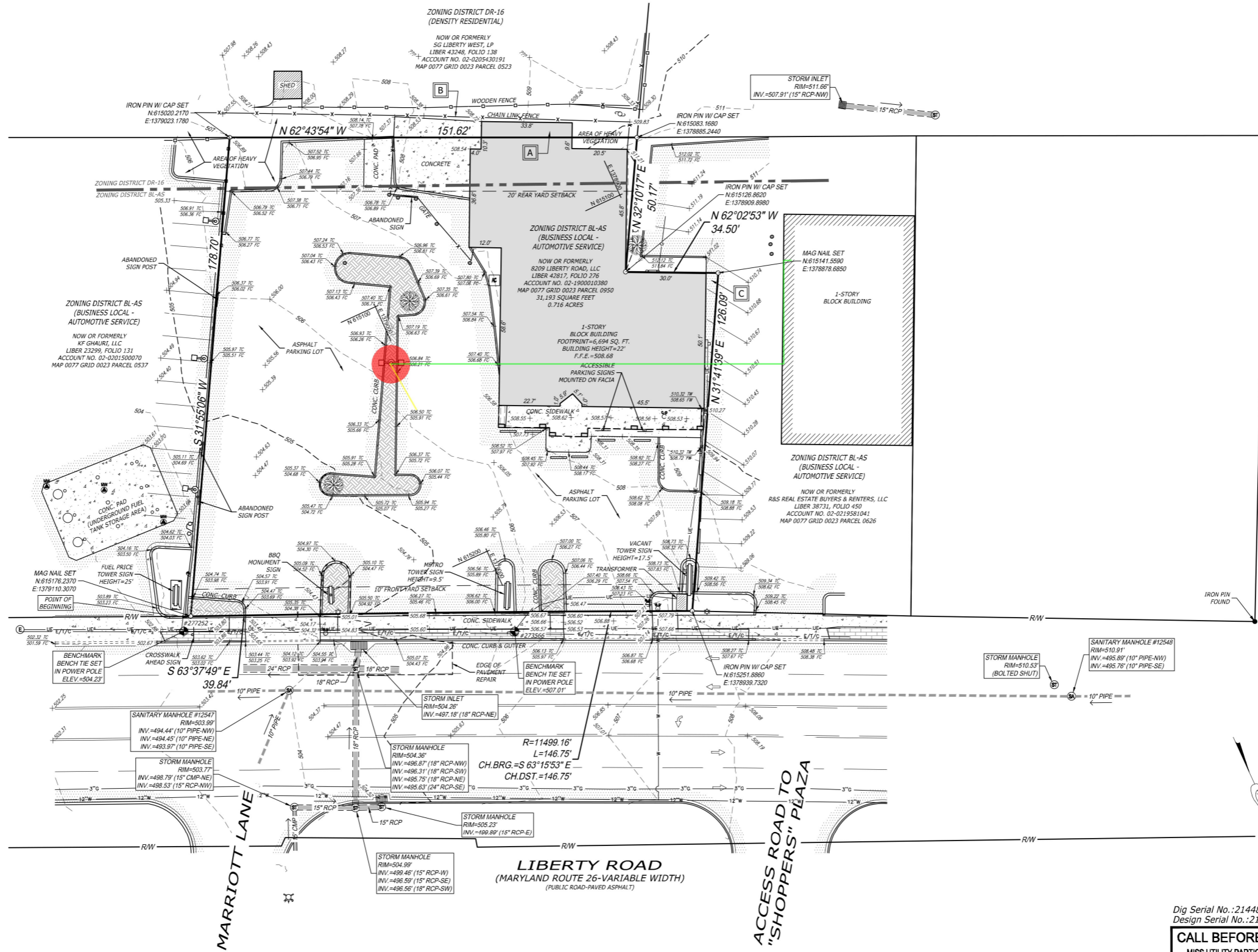
05/02/22
 65W2-R

E-5

The following statement for all Electrical drawings:
 "I certify that these documents were prepared by or approved by me and that I am a duly licensed professional engineer under the laws of the State of Maryland, License Number 14850, expiration date 03-28-2024."

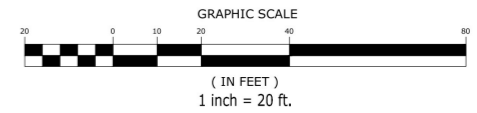
LEGEND OF SYMBOLS

- Contour Line --- 505 ---
- Water Line --- W ---
- Gas Line --- G ---
- Overhead Electric, Telephone & Cable Line --- E/T/C ---
- Underground Electric Line --- UE ---
- Storm Sewer --- S ---
- Sanitary Sewer --- SS ---
- Setback Line --- S ---
- Depressed Curb --- D ---
- Chain Link Fence --- X ---
- Wooden Fence --- W ---
- Sanitary Manhole --- SM ---
- Cleanout --- C ---
- Storm Manhole --- S ---
- Storm Inlet --- SI ---
- Sign --- S ---
- Illuminated Sign --- IS ---
- Bollard --- B ---
- Wheel Stop --- WS ---
- Spot Elevation --- +505.00 ---
- Existing Curb Elevations: TC=Top of Curb, FC=Bottom of Curb
- AC Unit --- AC ---
- Benchmark --- B ---
- Monitoring Well --- MW ---
- Right-of-Way --- RW ---
- Finished Floor Elevation --- F.F.E. ---
- Reinforced Concrete Pipe --- RCP ---
- Trees --- T ---
- Iron pin w/cap set (unless otherwise noted)
- Gas Meter
- Water Valve
- Water Meter
- Electric Meter
- Utility Pole
- Guy Wire
- Lamp Post
- Light Pole
- AC Unit
- Traffic Flow Arrow
- Turn Arrows
- Asphalt
- Concrete
- Brick



● SLF: Site Light ● 1.0 EA
■ SLFW: 3#10, 1" PVC SCH 40 Conduit ■ 187.7 FT
■ SLFW: 3#10 ■ 20.0 FT

Dig Serial No.: 21448613
 Design Serial No.: 21448654
CALL BEFORE YOU DIG!
 MISS UTILITY PARTICIPANTS REQUEST
 3 WORKING DAYS NOTICE BEFORE YOU DIG,
 DRILL, OR BLAST - STOP CALL
 Miss Utility of Maryland, Inc.
 1-800-257 7777



NO.	DATE	DESCRIPTION	BY
1	06/19/23	ORIGINAL SUBMITTAL	WJM
2		PER FIELD VISIT	WJM

THIS PLAN OR PLAT OF SURVEY IS ONLY VALID TO THE PARTIES CERTIFIED HEREOF.
 THIS PLAN OR PLAT OF SURVEY IS ONLY VALID IF THE SIGNATURE OF THE LICENSED PROFESSIONAL OF RECORD.
 ANY ALTERATIONS TO THIS PLAN OR PLAT OF SURVEY MADE AFTER BEING SIGNED AND SEALED BY SAID LICENSED PROFESSIONAL RENDER THIS PLAN OR PLAT OF SURVEY NULL AND VOID.

MDM
 SURVEYORS & ENGINEERS, LLC
 Surveyors • Engineers • Site Planners
 375 Northgate Drive
 W. 10th St. Suite 100
 P.O. Box 100
 Pk: (724) 934-2810 • Fax: (724) 934-2811
 mdmsurvey@mdmllc.com
 www.mdmllc.com

Proposed AutoZone Store #5313
 8209 Liberty Road
 2nd Election District, County of Baltimore
 State of Maryland
 ALTA/NSPS LAND TITLE SURVEY

SEAL
SCALE: 1"=20'
DATE: 06/19/23
DRAWN BY: WJM
CHK'D BY: HGM
SHEET 2 of 2
Project No. 9248