

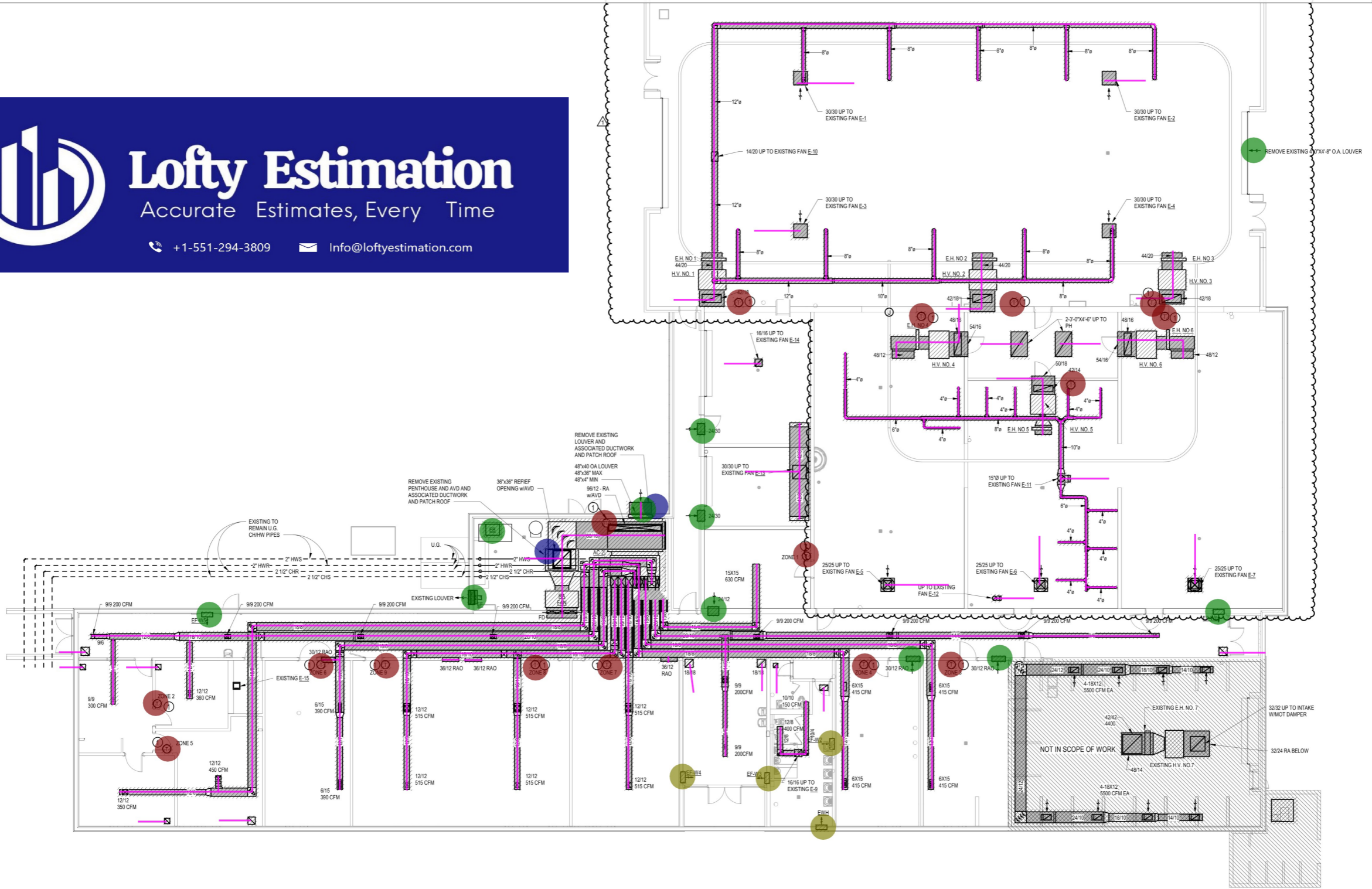
- DEMO, DUCT WORK TO BE REMOVE W/ ASSOCIATED MECHANICAL UNIT, EXHAUST FAN, GRILL, DAMPER, FITTING... 1672.4 FT
- DEMO, THERMOSTAT TO BE REMOVE AND EXISTING WALL PATCH 16.0 EA
- DEMO, AIR DEVICES TO BE REMOVE 11.0 EA
- DEMO, UNIT HEATER RO BE REMOVE 4.0 EA
- DEMO, AFTER DEMOLITION PATCH ROOF 2.0 EA



Lofty Estimation

Accurate Estimates, Every Time

+1-551-294-3809 Info@loftyestimation.com



1 FLOOR PLAN - DEMOLITION - HVAC
1/8" = 1'-0"

NOTES: (THIS SHEET ONLY)

Scope of Work
 AREA NOT IN SCOPE
 DEMOLITION

LINE LEGEND	
	EXISTING TO REMAIN
	DEMOLITION

PRAXIS3
 100 Peachtree St NW Suite 1450 Atlanta, GA 30303
 404-875-4500 tel 404-876-8884 fax www.praxis3.com

GEORGIA REGISTERED ENGINEER
 NBP ENGINEERS, INC.
 CO. #0000000774 EXPIRES: 06/30/2024

Copyright © 2023 Praxis3, LLC
 All rights reserved. No part of this drawing may be reproduced or transmitted in any form or by any means electronic or mechanical, including photocopying, recording, or by any information storage and retrieval system, without the prior written permission of Praxis3, LLC. It is to be returned upon request. Scale as stated on valid on the original drawing.

Rev	Date	Comments
	06.15.23	Permit Set
1	12.07.23	Revision 1
2	04.30.24	Bid Set

Client:
Board of Regents of the U.S.G.
 270 Washington ST, SW
 Atlanta, GA 30334
 Project Number: 23090
 Project Name:
J-361C ABAC Chambliss Hall Renovation

Tifton, GA

Sheet Title:
FLOOR PLAN - DEMOLITION - HVAC

Sheet Number:
M101



Copyright © 2023 Praxis3, LLC
All reports, plans, specifications, computer files, field notes, tables and other documents and instruments prepared by Praxis3 shall remain in common law, statutory and other reserved rights, including copyright therein.

This drawing may not be reproduced in whole or in part without written permission of Praxis3. It is to be returned upon request. Stamps as stated are valid on the original drawings.

Rev	Date	Comments
1	06.15.23	Permit Set
1	12.07.23	Revision 1
2	04.30.24	Bid Set

- 23.014 • THERMOSTAT
- 23.015 • DUCT- EA EXHAUST AIR DUCT- 5"
- 23.016 • DUCT- EA EXHAUST AIR DUCT- 6"
- 23.017 • DUCT- EA EXHAUST AIR DUCT- 7"
- 23.018 • DUCT- EA EXHAUST AIR DUCT- 8"
- 23.019 • DUCT- EA EXHAUST AIR DUCT- 9"
- 23.020 • DUCT- EA EXHAUST AIR DUCT- 10"
- 23.021 • DUCT- EA EXHAUST AIR DUCT- 12"
- 23.022 • DUCT- EA EXHAUST AIR DUCT- 14"
- 23.023 • DUCT- EA EXHAUST AIR DUCT- 16"
- 23.024 • DUCT- EA EXHAUST AIR DUCT- 18"
- 23.025 • DUCT- EA EXHAUST FLEX HOSE- 5"
- 23.026 • DUCT- RA RETURN AIR DUCT- 10"
- 23.027 • DUCT- SA FLEXIBLE SUPPLY AIR DUCT- 8"
- 23.028 • DUCT- SA SUPPLY AIR DUCT- 4"
- 23.029 • DUCT- SA SUPPLY AIR DUCT- 6"
- 23.030 • DUCT- SA SUPPLY AIR DUCT- 8"
- 23.031 • DUCT- SA SUPPLY AIR DUCT- 10"
- 23.032 • DUCT- SA SUPPLY AIR DUCT- 12"
- 23.033 • DUCT- SA SUPPLY AIR DUCT- 14"
- 23.034 • DUCT- SA SUPPLY AIR DUCT- 16"
- 23.035 • DUCT- SA SUPPLY AIR DUCT- 18"
- 23.036 • DUCT- SA SUPPLY AIR DUCT- 20"
- 23.037 • DUCT- SA SUPPLY AIR DUCT- 24"
- 23.038 • DUCT- SA SUPPLY AIR DUCT- 30"
- 23.039 • DUCT- SA SUPPLY AIR DUCT- 36"
- 23.040 • DUCT- SA SUPPLY AIR DUCT- 42"
- 23.041 • DUCT- SA SUPPLY AIR DUCT- 48"
- 23.042 • DUCT- SA SUPPLY AIR DUCT- 54"
- 23.043 • DUCT- SA SUPPLY AIR DUCT- 60"
- 23.044 • DUCT- SA SUPPLY AIR DUCT- 72"
- 23.045 • DUCT- SA SUPPLY AIR DUCT- 84"
- 23.046 • DUCT- SA SUPPLY AIR DUCT- 96"
- 23.047 • DUCT- SA SUPPLY AIR DUCT- 108"
- 23.048 • DUCT- SA SUPPLY AIR DUCT- 120"
- 23.049 • DUCT- SA SUPPLY AIR DUCT- 144"
- 23.050 • DUCT- SA SUPPLY AIR DUCT- 168"
- 23.051 • DUCT- SA SUPPLY AIR DUCT- 192"
- 23.052 • DUCT- SA SUPPLY AIR DUCT- 216"
- 23.053 • DUCT- SA SUPPLY AIR DUCT- 240"
- 23.054 • DUCT- SA SUPPLY AIR DUCT- 270"
- 23.055 • DUCT- SA SUPPLY AIR DUCT- 300"
- 23.056 • DUCT- SA SUPPLY AIR DUCT- 324"
- 23.057 • DUCT- SA SUPPLY AIR DUCT- 360"
- 23.058 • DUCT- SA SUPPLY AIR DUCT- 408"
- 23.059 • DUCT- SA SUPPLY AIR DUCT- 456"
- 23.060 • DUCT- SA SUPPLY AIR DUCT- 504"
- 23.061 • DUCT- SA SUPPLY AIR DUCT- 576"
- 23.062 • DUCT- SA SUPPLY AIR DUCT- 648"
- 23.063 • DUCT- SA SUPPLY AIR DUCT- 720"
- 23.064 • DUCT- SA SUPPLY AIR DUCT- 800"
- 23.065 • DUCT- SA SUPPLY AIR DUCT- 880"
- 23.066 • DUCT- SA SUPPLY AIR DUCT- 960"
- 23.067 • DUCT- SA SUPPLY AIR DUCT- 1040"
- 23.068 • DUCT- SA SUPPLY AIR DUCT- 1120"
- 23.069 • DUCT- SA SUPPLY AIR DUCT- 1200"
- 23.070 • DUCT- SA SUPPLY AIR DUCT- 1280"
- 23.071 • DUCT- SA SUPPLY AIR DUCT- 1360"
- 23.072 • DUCT- SA SUPPLY AIR DUCT- 1440"
- 23.073 • DUCT- SA SUPPLY AIR DUCT- 1520"
- 23.074 • DUCT- SA SUPPLY AIR DUCT- 1600"
- 23.075 • DUCT- SA SUPPLY AIR DUCT- 1680"
- 23.076 • DUCT- SA SUPPLY AIR DUCT- 1760"
- 23.077 • DUCT- SA SUPPLY AIR DUCT- 1840"
- 23.078 • DUCT- SA SUPPLY AIR DUCT- 1920"
- 23.079 • DUCT- SA SUPPLY AIR DUCT- 2000"
- 23.080 • DUCT- SA SUPPLY AIR DUCT- 2080"
- 23.081 • DUCT- SA SUPPLY AIR DUCT- 2160"
- 23.082 • DUCT- SA SUPPLY AIR DUCT- 2240"
- 23.083 • DUCT- SA SUPPLY AIR DUCT- 2320"
- 23.084 • DUCT- SA SUPPLY AIR DUCT- 2400"
- 23.085 • DUCT- SA SUPPLY AIR DUCT- 2480"
- 23.086 • DUCT- SA SUPPLY AIR DUCT- 2560"
- 23.087 • DUCT- SA SUPPLY AIR DUCT- 2640"
- 23.088 • DUCT- SA SUPPLY AIR DUCT- 2720"
- 23.089 • DUCT- SA SUPPLY AIR DUCT- 2800"
- 23.090 • DUCT- SA SUPPLY AIR DUCT- 2880"
- 23.091 • DUCT- SA SUPPLY AIR DUCT- 2960"
- 23.092 • DUCT- SA SUPPLY AIR DUCT- 3040"
- 23.093 • DUCT- SA SUPPLY AIR DUCT- 3120"
- 23.094 • DUCT- SA SUPPLY AIR DUCT- 3200"
- 23.095 • DUCT- SA SUPPLY AIR DUCT- 3280"
- 23.096 • DUCT- SA SUPPLY AIR DUCT- 3360"
- 23.097 • DUCT- SA SUPPLY AIR DUCT- 3440"
- 23.098 • DUCT- SA SUPPLY AIR DUCT- 3520"
- 23.099 • DUCT- SA SUPPLY AIR DUCT- 3600"
- 23.100 • DUCT- SA SUPPLY AIR DUCT- 3680"
- 23.101 • DUCT- SA SUPPLY AIR DUCT- 3760"
- 23.102 • DUCT- SA SUPPLY AIR DUCT- 3840"
- 23.103 • DUCT- SA SUPPLY AIR DUCT- 3920"
- 23.104 • DUCT- SA SUPPLY AIR DUCT- 4000"
- 23.105 • DUCT- SA SUPPLY AIR DUCT- 4080"
- 23.106 • DUCT- SA SUPPLY AIR DUCT- 4160"
- 23.107 • DUCT- SA SUPPLY AIR DUCT- 4240"
- 23.108 • DUCT- SA SUPPLY AIR DUCT- 4320"
- 23.109 • DUCT- SA SUPPLY AIR DUCT- 4400"
- 23.110 • DUCT- SA SUPPLY AIR DUCT- 4480"
- 23.111 • DUCT- SA SUPPLY AIR DUCT- 4560"
- 23.112 • DUCT- SA SUPPLY AIR DUCT- 4640"
- 23.113 • DUCT- SA SUPPLY AIR DUCT- 4720"
- 23.114 • DUCT- SA SUPPLY AIR DUCT- 4800"
- 23.115 • DUCT- SA SUPPLY AIR DUCT- 4880"
- 23.116 • DUCT- SA SUPPLY AIR DUCT- 4960"
- 23.117 • DUCT- SA SUPPLY AIR DUCT- 5040"
- 23.118 • DUCT- SA SUPPLY AIR DUCT- 5120"
- 23.119 • DUCT- SA SUPPLY AIR DUCT- 5200"
- 23.120 • DUCT- SA SUPPLY AIR DUCT- 5280"
- 23.121 • DUCT- SA SUPPLY AIR DUCT- 5360"
- 23.122 • DUCT- SA SUPPLY AIR DUCT- 5440"
- 23.123 • DUCT- SA SUPPLY AIR DUCT- 5520"
- 23.124 • DUCT- SA SUPPLY AIR DUCT- 5600"
- 23.125 • DUCT- SA SUPPLY AIR DUCT- 5680"
- 23.126 • DUCT- SA SUPPLY AIR DUCT- 5760"
- 23.127 • DUCT- SA SUPPLY AIR DUCT- 5840"
- 23.128 • DUCT- SA SUPPLY AIR DUCT- 5920"
- 23.129 • DUCT- SA SUPPLY AIR DUCT- 6000"
- 23.130 • DUCT- SA SUPPLY AIR DUCT- 6080"
- 23.131 • DUCT- SA SUPPLY AIR DUCT- 6160"
- 23.132 • DUCT- SA SUPPLY AIR DUCT- 6240"
- 23.133 • DUCT- SA SUPPLY AIR DUCT- 6320"
- 23.134 • DUCT- SA SUPPLY AIR DUCT- 6400"
- 23.135 • DUCT- SA SUPPLY AIR DUCT- 6480"
- 23.136 • DUCT- SA SUPPLY AIR DUCT- 6560"
- 23.137 • DUCT- SA SUPPLY AIR DUCT- 6640"
- 23.138 • DUCT- SA SUPPLY AIR DUCT- 6720"
- 23.139 • DUCT- SA SUPPLY AIR DUCT- 6800"
- 23.140 • DUCT- SA SUPPLY AIR DUCT- 6880"
- 23.141 • DUCT- SA SUPPLY AIR DUCT- 6960"
- 23.142 • DUCT- SA SUPPLY AIR DUCT- 7040"
- 23.143 • DUCT- SA SUPPLY AIR DUCT- 7120"
- 23.144 • DUCT- SA SUPPLY AIR DUCT- 7200"
- 23.145 • DUCT- SA SUPPLY AIR DUCT- 7280"
- 23.146 • DUCT- SA SUPPLY AIR DUCT- 7360"
- 23.147 • DUCT- SA SUPPLY AIR DUCT- 7440"
- 23.148 • DUCT- SA SUPPLY AIR DUCT- 7520"
- 23.149 • DUCT- SA SUPPLY AIR DUCT- 7600"
- 23.150 • DUCT- SA SUPPLY AIR DUCT- 7680"
- 23.151 • DUCT- SA SUPPLY AIR DUCT- 7760"
- 23.152 • DUCT- SA SUPPLY AIR DUCT- 7840"
- 23.153 • DUCT- SA SUPPLY AIR DUCT- 7920"
- 23.154 • DUCT- SA SUPPLY AIR DUCT- 8000"
- 23.155 • DUCT- SA SUPPLY AIR DUCT- 8080"
- 23.156 • DUCT- SA SUPPLY AIR DUCT- 8160"
- 23.157 • DUCT- SA SUPPLY AIR DUCT- 8240"
- 23.158 • DUCT- SA SUPPLY AIR DUCT- 8320"
- 23.159 • DUCT- SA SUPPLY AIR DUCT- 8400"
- 23.160 • DUCT- SA SUPPLY AIR DUCT- 8480"
- 23.161 • DUCT- SA SUPPLY AIR DUCT- 8560"
- 23.162 • DUCT- SA SUPPLY AIR DUCT- 8640"
- 23.163 • DUCT- SA SUPPLY AIR DUCT- 8720"
- 23.164 • DUCT- SA SUPPLY AIR DUCT- 8800"
- 23.165 • DUCT- SA SUPPLY AIR DUCT- 8880"
- 23.166 • DUCT- SA SUPPLY AIR DUCT- 8960"
- 23.167 • DUCT- SA SUPPLY AIR DUCT- 9040"
- 23.168 • DUCT- SA SUPPLY AIR DUCT- 9120"
- 23.169 • DUCT- SA SUPPLY AIR DUCT- 9200"
- 23.170 • DUCT- SA SUPPLY AIR DUCT- 9280"
- 23.171 • DUCT- SA SUPPLY AIR DUCT- 9360"
- 23.172 • DUCT- SA SUPPLY AIR DUCT- 9440"
- 23.173 • DUCT- SA SUPPLY AIR DUCT- 9520"
- 23.174 • DUCT- SA SUPPLY AIR DUCT- 9600"
- 23.175 • DUCT- SA SUPPLY AIR DUCT- 9680"
- 23.176 • DUCT- SA SUPPLY AIR DUCT- 9760"
- 23.177 • DUCT- SA SUPPLY AIR DUCT- 9840"
- 23.178 • DUCT- SA SUPPLY AIR DUCT- 9920"
- 23.179 • DUCT- SA SUPPLY AIR DUCT- 10000"



FLOOR PLAN - NEW WORK - HVAC
1/8" = 1'-0"

- NOTES: (THIS SHEET ONLY)**
- FAN COIL UNIT ABOVE DOORWAY. ROUTE CD TO NEAREST DRAIN. REFER TO PLUMBING DRAWINGS.
 - ROUTE RULRS TO CORRESPONDING DUCT ON ROOF. SIZED TO MATCH MANUFACTURER'S RECOMMENDATIONS.
 - LINED TRANSFER DUCT W/90° ELBOW.
 - PROVIDE INSULATED METAL CURB CAP ON ROOF. REFER TO DETAIL 6M501.

Scope of Work

AREA NOT IN SCOPE

LINE LEGEND	
	POINT OF CONNECTION
	EXISTING TO REMAIN
	NEW WORK

Client:
Board of Regents of the U.S.G.

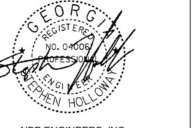
270 Washington ST, SW Atlanta, GA 30334

Project Number: 23090
Project Name:
J-361C ABAC Chambliss Hall Renovation

Tifton, GA

Sheet Title:
FLOOR PLAN - NEW WORK - HVAC

Sheet Number:
M201

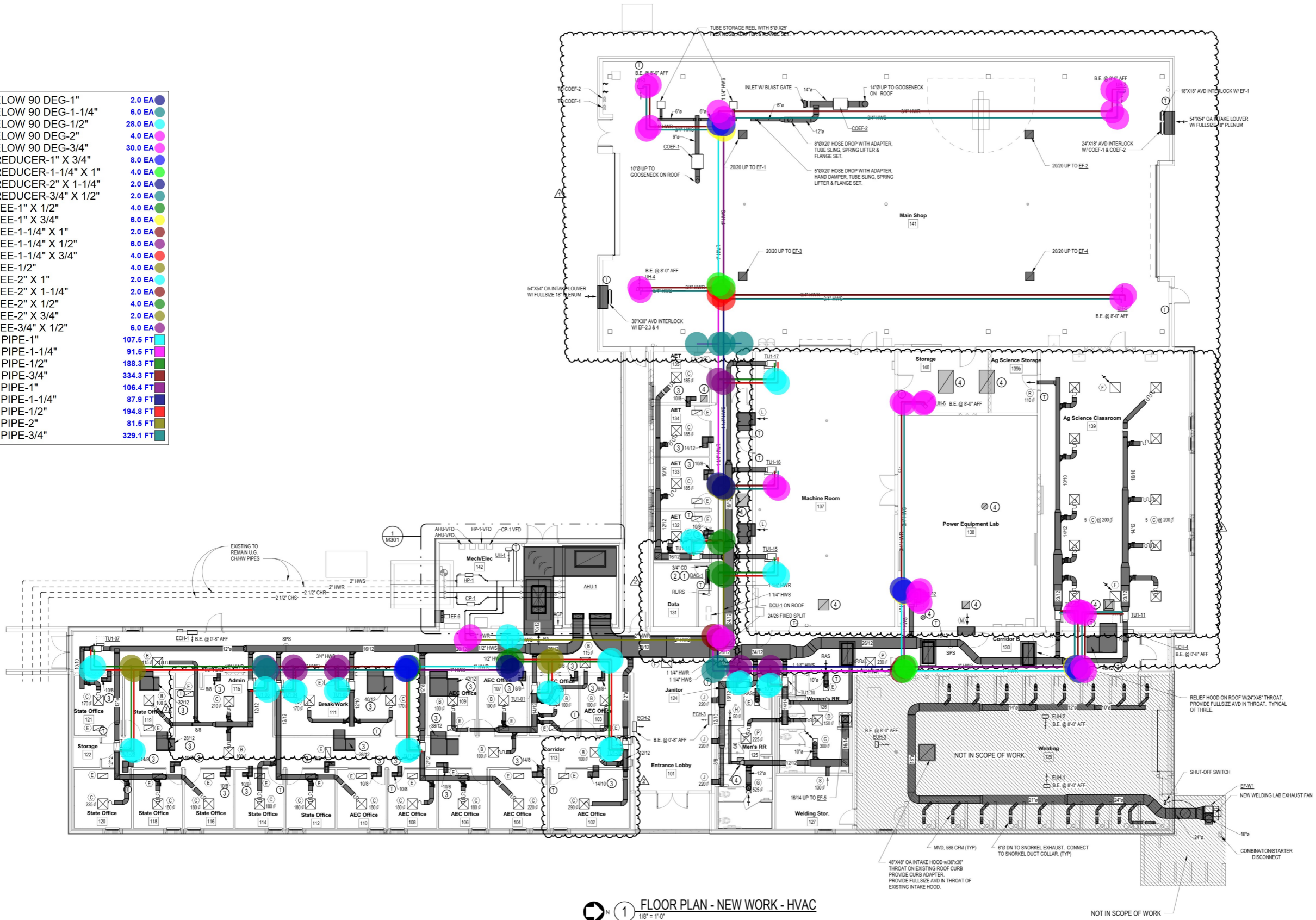


NBP ENGINEERS, INC. COAMPE000774 EXPIRES: 06/30/2024

Copyright © 2023 Praxis3, LLC. All reports, plans, specifications, computer files, field notes, notes and other documents and instruments prepared by Praxis3 shall remain at common law, statutory and other reserved rights, including copyright therein. This drawing may not be reproduced in whole or in part without written permission of Praxis3. It is to be returned upon request. Stamps as stated are valid on the original drawings.

Rev	Date	Comments
	06.15.23	Permit Set
1	12.07.23	Revision 1
2	04.30.24	Bid Set

• LINE JNT, ELOW 90 DEG-1"	2.0 EA
• LINE JNT, ELOW 90 DEG-1-1/4"	6.0 EA
• LINE JNT, ELOW 90 DEG-1/2"	28.0 EA
• LINE JNT, ELOW 90 DEG-2"	4.0 EA
• LINE JNT, ELOW 90 DEG-3/4"	30.0 EA
• LINE JNT, REDUCER-1" X 3/4"	8.0 EA
• LINE JNT, REDUCER-1-1/4" X 1"	4.0 EA
• LINE JNT, REDUCER-2" X 1-1/4"	2.0 EA
• LINE JNT, REDUCER-3/4" X 1/2"	2.0 EA
• LINE JNT, TEE-1" X 1/2"	4.0 EA
• LINE JNT, TEE-1" X 3/4"	6.0 EA
• LINE JNT, TEE-1-1/4" X 1"	2.0 EA
• LINE JNT, TEE-1-1/4" X 1/2"	6.0 EA
• LINE JNT, TEE-1-1/4" X 3/4"	4.0 EA
• LINE JNT, TEE-1/2"	4.0 EA
• LINE JNT, TEE-2" X 1"	2.0 EA
• LINE JNT, TEE-2" X 1-1/4"	2.0 EA
• LINE JNT, TEE-2" X 1/2"	4.0 EA
• LINE JNT, TEE-2" X 3/4"	2.0 EA
• LINE JNT, TEE-3/4" X 1/2"	6.0 EA
LINE, HWR PIPE-1"	107.5 FT
LINE, HWR PIPE-1-1/4"	91.5 FT
LINE, HWR PIPE-1/2"	188.3 FT
LINE, HWR PIPE-3/4"	334.3 FT
LINE, HWS PIPE-1"	106.4 FT
LINE, HWS PIPE-1-1/4"	87.9 FT
LINE, HWS PIPE-1/2"	194.8 FT
LINE, HWS PIPE-2"	81.5 FT
LINE, HWS PIPE-3/4"	329.1 FT



1 FLOOR PLAN - NEW WORK - HVAC
1/8" = 1'-0"

- NOTES: (THIS SHEET ONLY)**
- FAN COIL UNIT ABOVE DOORWAY. ROUTE CD TO NEAREST DRAIN. REFER TO PLUMBING DRAWINGS.
 - ROUTE RLR'S TO CORRESPONDING DCLL ON ROOF. SIZED TO MATCH MANUFACTURER'S RECOMMENDATIONS.
 - LINED TRANSFER DUCT W/90° ELBOW.
 - PROVIDE INSULATED METAL CURB CAP ON ROOF. REFER TO DETAIL 6M501.

Scope of Work
AREA NOT IN SCOPE

LINE LEGEND	
	POINT OF CONNECTION
	EXISTING TO REMAIN
	NEW WORK

Client:
Board of Regents of the U.S.G.

270 Washington ST, SW
Atlanta, GA 30334

Project Number: 23090
Project Name:

J-361C ABAC Chambliss Hall Renovation

Tifton, GA

Sheet Title:
FLOOR PLAN - NEW WORK - HVAC

Sheet Number:
M201

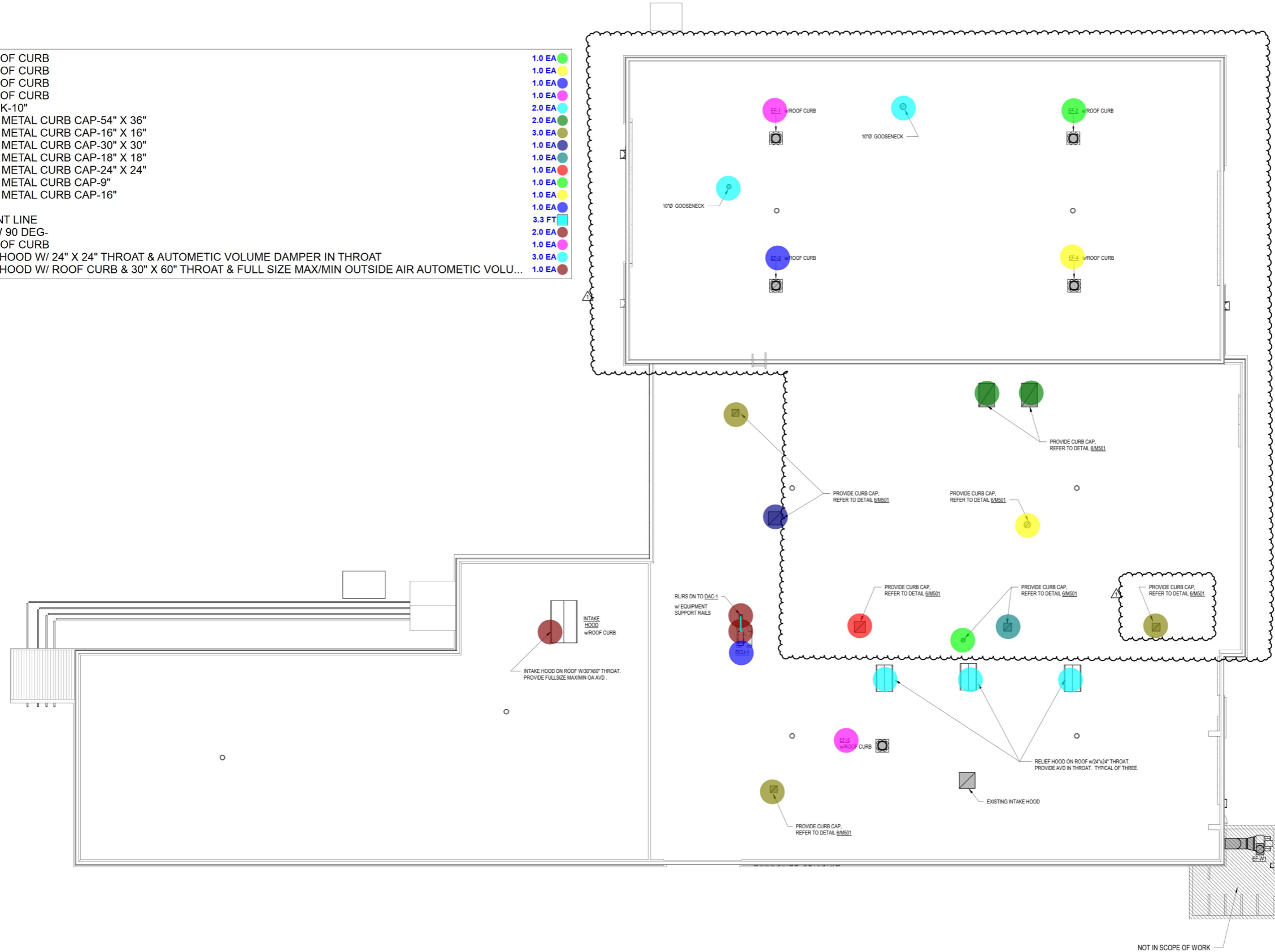


NBP ENGINEERS, INC.
COMPEF000774
EXPIRES: 06/30/2024

Copyright © 2023 Praxis3, LLC
All reports, plans, specifications, computer files, field notes, notes and other documents and instruments prepared by Praxis3 shall remain the property of Praxis3 and shall not be reproduced or transmitted in any form or by any means, electronic, mechanical, photocopying, recording, or by any information storage and retrieval system, without the prior written permission of Praxis3, LLC.

Rev	Date	Comments
	06.15.23	Permit Set
1	12.07.23	Revision 1
2	04.30.24	Bid Set

- FAN, EF-2 W/ ROOF CURB 1.0 EA
- FAN, EF-4 W/ ROOF CURB 1.0 EA
- FAN, EF-3 W/ ROOF CURB 1.0 EA
- FAN, EF-1 W/ ROOF CURB 1.0 EA
- JNT, GOOSENECK-10" 2.0 EA
- JNT, INSOLATED METAL CURB CAP-54" X 36" 3.0 EA
- JNT, INSOLATED METAL CURB CAP-16" X 16" 1.0 EA
- JNT, INSOLATED METAL CURB CAP-30" X 30" 1.0 EA
- JNT, INSOLATED METAL CURB CAP-18" X 18" 1.0 EA
- JNT, INSOLATED METAL CURB CAP-24" X 24" 1.0 EA
- JNT, INSOLATED METAL CURB CAP-9" 1.0 EA
- JNT, INSOLATED METAL CURB CAP-16" 1.0 EA
- UNIT, DCU-1 1.0 EA
- REF, REFRIGRENT LINE 3.3 FT
- REF JNT, ELBOW 90 DEG- 2.0 EA
- FAN, EF-5 W/ ROOF CURB 1.0 EA
- GRILLE, RELIEF HOOD W/ 24" X 24" THROAT & AUTOMETIC VOLUME DAMPER IN THROAT 3.0 EA
- GRILLE, INTAKE HOOD W/ ROOF CURB & 30" X 60" THROAT & FULL SIZE MAX/MIN OUTSIDE AIR AUTOMETIC VOLU... 1.0 EA



NOT IN SCOPE OF WORK

Client:
Board of Regents of the U.S.G.
270 Washington ST, SW
Atlanta, GA 30334
Project Number: 23090
Project Name:
J-361C ABAC Chambliss Hall Renovation

Tifton, GA

Sheet Title:
ROOF PLAN - NEW WORK - HVAC

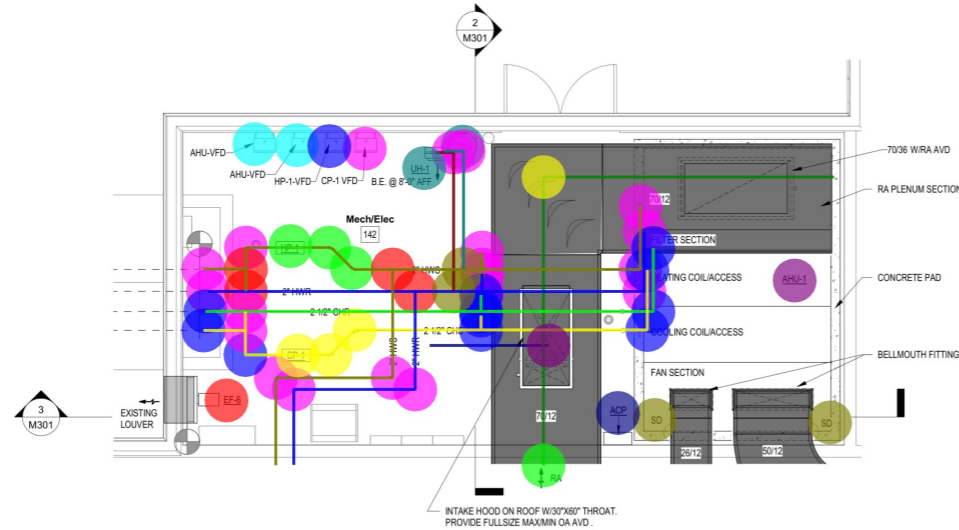
Sheet Number:
M202



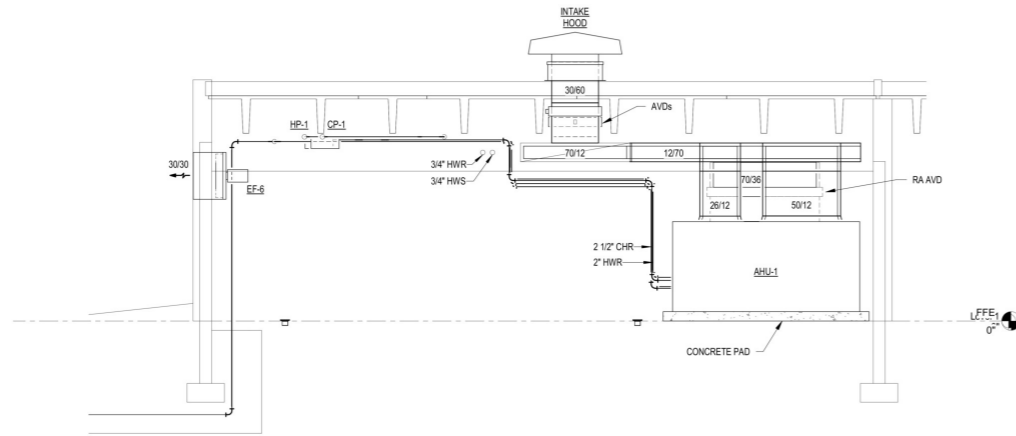
NBP ENGINEERS, INC.
COMPEF000774
EXPIRES: 06/30/2024

Copyright © 2023 Praxis3, LLC
All reports, plans, specifications, computer files, field notes, notes and other documents and instruments prepared by Praxis3 shall remain the property of Praxis3 and shall not be reproduced or transmitted in any form or by any means, electronic, mechanical, photocopying, recording, or by any information storage and retrieval system, without the prior written permission of Praxis3, LLC.

Rev	Date	Comments
	06.15.23	Permit Set
1	12.07.23	Revision 1
2	04.30.24	Bid Set



1 LARGE SCALE - NEW WORK - HVAC
1/4" = 1'-0"



3 SECTION @ AHU - HVAC
1/4" = 1'-0"

- DEV, SMOKE DETECTOR 2.0 EA
- UNIT, ACP 1.0 EA
- UNIT, AHU-1 1.0 EA
- UNIT, UH-1 1.0 EA
- FAN, EF-6 1.0 EA
- UNIT, HP-1 1.0 EA
- UNIT, CP-1 1.0 EA
- DEV, THERMOSTAT 1.0 EA
- UNIT, HP-1-VFD 1.0 EA
- UNIT, CP-1-VFD 1.0 EA
- UNIT, AHU-VFD 2.0 EA
- DUCT-RA, RETURN AIR DUCT-70" X 12" 30.9 FT
- DUCT-RA, RETURN AIR DUCT-30" X 60" 6.3 FT
- TRANS, BRANCH TAKE-OFF-30" X 60" 1.0 EA
- GRILLE, RETURN AIR GRILL-70" X 12" 1.0 EA
- JNT, ELBOW 90 DEG 70" X 12" 1.0 EA
- LINE, HWR PIPE-2" 49.2 FT
- LINE, HWS PIPE-2" 53.2 FT
- LINE, HWR PIPE-3/4" 8.4 FT
- LINE, HWS PIPE-3/4" 7.4 FT
- LINE, CHS PIPE-2-1/2" 36.2 FT
- LINE, CHR PIPE-2-1/2" 34.2 FT
- LINE JNT, ELOW 90 DEG-2" 15.0 EA
- LINE JNT, TEE-2" 4.0 EA
- LINE JNT, TEE-2" X 3/4" 2.0 EA
- LINE JNT, ELOW 90 DEG-3/4" 2.0 EA
- LINE JNT, ELOW 45 DEG-2" 2.0 EA
- LINE JNT, ELOW 45 DEG-2-1/2" 2.0 EA
- LINE JNT, ELOW 90 DEG-2-1/2" 11.0 EA
- LINE JNT, TEE-2-1/2" 2.0 EA

Client:
Board of Regents of the U.S.G.

270 Washington ST, SW
Atlanta, GA 30334

Project Number: 23090
Project Name:

J-361C ABAC
Chambliss Hall
Renovation

Tifton, GA

Sheet Title:
LARGE SCALE & SECTIONS - HVAC

Sheet Number:

M301



NBP ENGINEERS, INC. COAMPEF000774 EXPIRES: 06/30/2024

Copyright © 2023 Praxis3, LLC. All reports, plans, specifications, computer files, field data, notes and other documents and instruments prepared by Praxis3 shall remain the property of Praxis3 and shall not be reproduced or transmitted in any form or by any means, electronic, mechanical, photocopying, recording, or by any information storage and retrieval system, without the prior written permission of Praxis3, LLC.

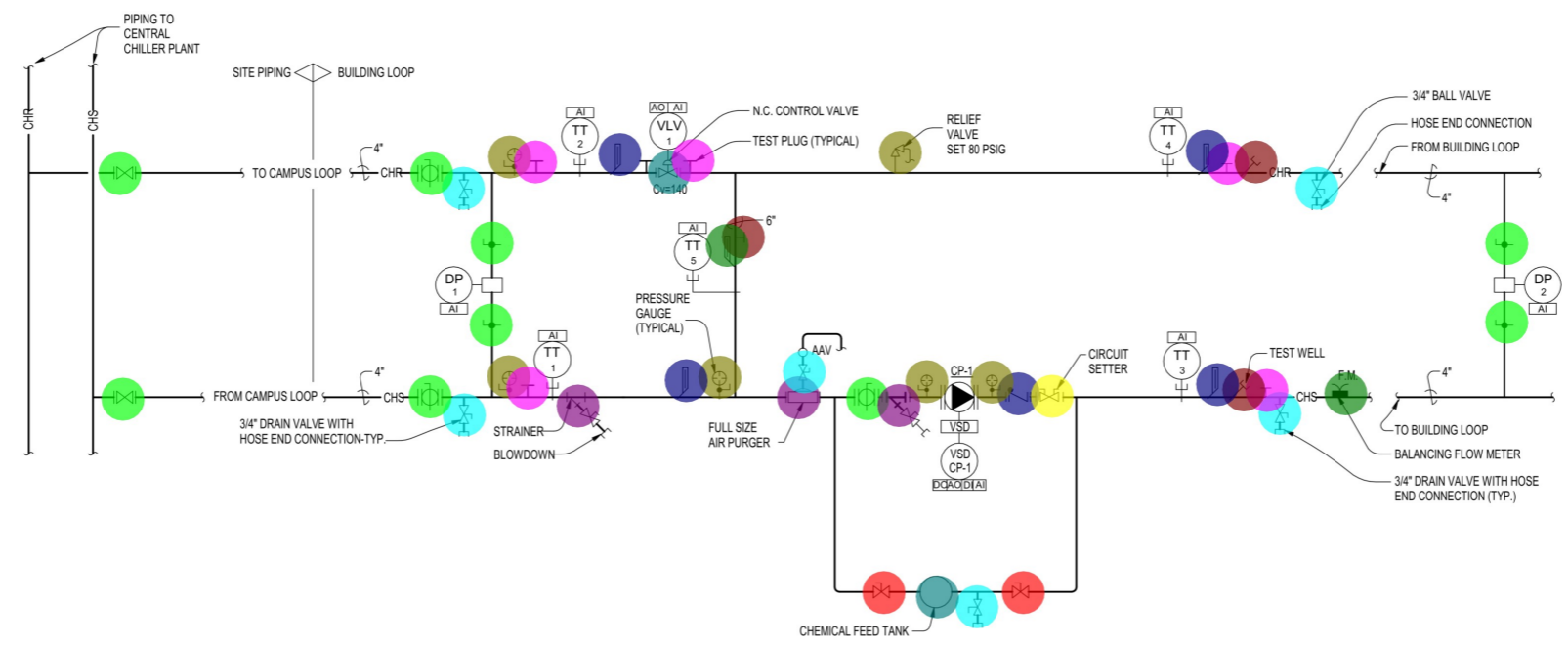
Rev	Date	Comments
0	06.15.23	Permit Set
1	12.07.23	Revision 1
2	04.30.24	Bid Set

- LINE V, BALL VALVE-3/4" 6.0 EA
- LINE V, TEST WELL-4" 2.0 EA
- LINE V, BALANCING FLOW METER-4" 1.0 EA
- LINE V, PRESSURE RELIEF VALVE-3/4" 1.0 EA
- LINE V, THERMOMETER-4" 4.0 EA
- LINE V, AIR PURGER 4" 1.0 EA
- LINE V, CHEMICAL FEED TANK 1.0 EA
- LINE V, BALLANCING VALVE-4" 2.0 EA
- LINE V, BALL VALVE-4" 7.0 EA
- LINE V, CIRCUIT SETTER-4" 1.0 EA
- LINE V, TEST PLUG-4" 5.0 EA
- LINE V, TEST PLUG-6" 1.0 EA
- LINE V, THERMOMETER-6" 1.0 EA
- LINE V, PRESSURE GAUGE-4" 5.0 EA
- LINE V, CHECK VALVE-4" 1.0 EA
- LINE V, STRAINER-4" 2.0 EA
- LINE V, CONTROL VALVE-4" 1.0 EA
- LINE V, BALANCE VALVE THREADED & FLANGE... 2.0 EA

- 6.0 EA
- 2.0 EA
- 1.0 EA
- 1.0 EA
- 4.0 EA
- 1.0 EA
- 1.0 EA
- 2.0 EA
- 7.0 EA
- 1.0 EA
- 5.0 EA
- 1.0 EA
- 1.0 EA
- 5.0 EA
- 1.0 EA
- 2.0 EA
- 1.0 EA
- 2.0 EA

		OUTPUTS		INPUTS		SOFTWARE						LOGS	NOTES	
		DIGITAL	ANALOG	DIGITAL	ANALOG	ALARM	DDC	ENERGY MGMT.						
ACP														
DDC PANELS														
INPUT/OUTPUT														
SUMMARIES														
CHILLED WATER SYSTEM														
TAG														
TT 1	CHILLED WATER SUPPLY-CAMPUS LOOP													
TT 2	CHILLED WATER RETURN-CAMPUS LOOP													
TT 3	CHILLED WATER SUPPLY-BUILDING LOOP													
TT 4	CHILLED WATER RETURN-BUILDING LOOP													
TT 5	CHILLED WATER BYPASS LOOP													
DP 1	DIFFERENTIAL PRESS. SENSOR-CAMPUS LOOP													
DP 2	DIFFERENTIAL PRESS. SENSOR-BUILDING LOOP													
CP-1	CHW PUMP - VFD CONTROL													O 3
VLV 1	CHW VALVE-CAMPUS LOOP													L

- NOTES:
- FAILURE MODES:
O - OPEN OR ON
C - CLOSE OR OFF
L - LAST COMMAND
 - WHERE FAILURE MODE IS INDICATED, THE INDICATED POSITION SHALL OCCUR ON INTERRUPTION OF ELECTRIC POWER TO THE DDC PANEL.
 - PROVIDE FULL INTEGRATION THROUGH THE VFD BACNET INTERFACE CARD FOR INPUT OF ALL VFD OPERATING PARAMETERS TO THE BAS.



1 CHILLED WATER FLOW DIAGRAM - HVAC
NOT TO SCALE

Client:
Board of Regents of the U.S.G.
270 Washington ST, SW Atlanta, GA 30334
Project Number: 23090
Project Name:
J-361C ABAC Chambliss Hall Renovation

Tifton, GA

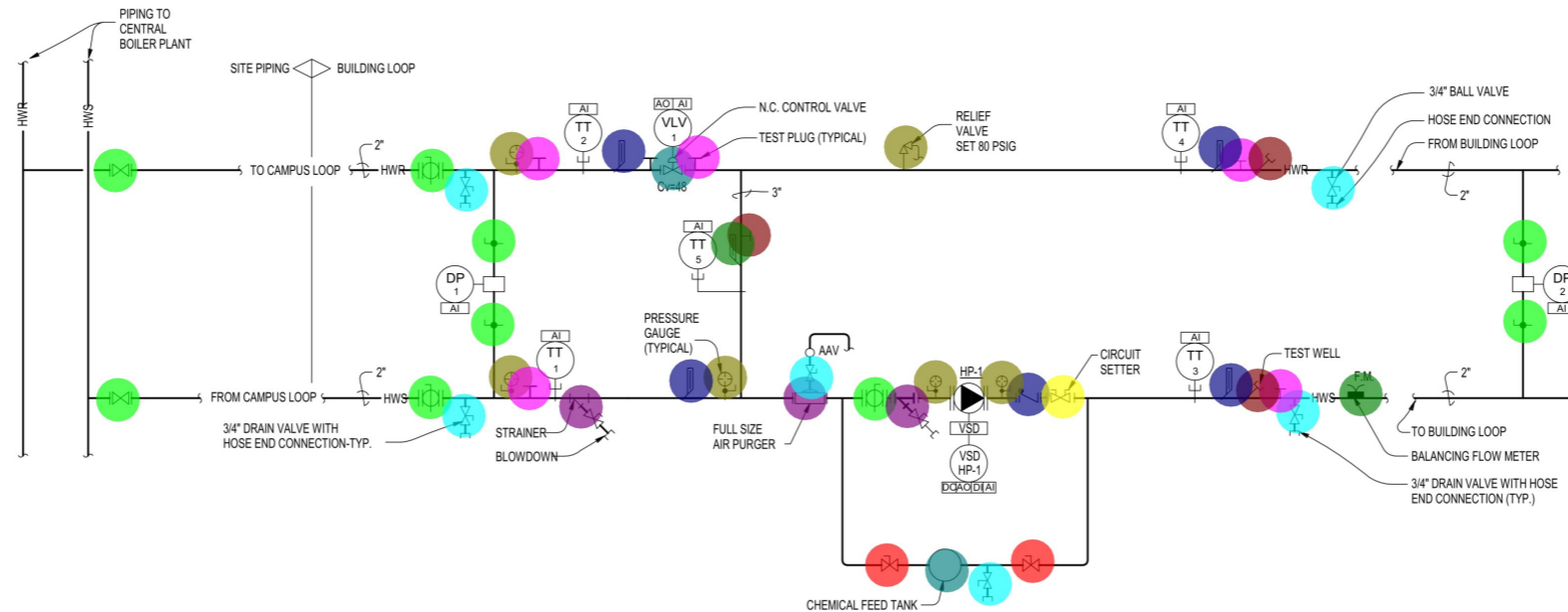
Sheet Title:
FLOW DIAGRAM - CHILLED WATER - HVAC

Sheet Number:
M401

- LINE V, BALANCE VALVE THREADED & FLANG... 2.0 EA
- LINE V, CONTROL VALVE-2" 1.0 EA
- LINE V, STRAINER-2" 2.0 EA
- LINE V, CHECK VALVE-2" 1.0 EA
- LINE V, PRESSURE GAUGE-2" 5.0 EA
- LINE V, THERMOMETER-3" 1.0 EA
- LINE V, TEST PLUG-3" 1.0 EA
- LINE V, TEST PLUG-2" 5.0 EA
- LINE V, BALL VALVE-2" 7.0 EA
- LINE V, CIRCUIT SETTER-2" 1.0 EA
- LINE V, BALLANCING VALVE-2" 2.0 EA
- LINE V, AIR PURGER 2" 1.0 EA
- LINE V, THERMOMETER-2" 4.0 EA
- LINE V, BALANCING FLOW METER-2" 1.0 EA
- LINE V, TEST WELL-2" 2.0 EA
- LINE V, PRESSURE RELIEF VALVE-3/4" 1.0 EA
- LINE V, CHEMICAL FEED TANK 1.0 EA
- LINE V, BALL VALVE-3/4" 6.0 EA

ACP DDC PANELS INPUT/OUTPUT SUMMARIES		OUTPUTS		INPUTS				SOFTWARE							SYSTEM GRAPHIC DISPLAY	NOTES
		DIGITAL	ANALOG	DIGITAL		ANALOG		ALARM	DDC	ENERGY MGMT.		LOGS				
		START/STOP ENABLE/DISABLE OPEN/CLOSE START/STOP MAKE-UP SETPOINT ADJUST SPEED CONTROL DIFFERENTIAL PRESSURE PRESSURE SWITCH AUXILIARY CONTACT CURRENT RELAY DRIVE STATUS OPERATING STATUS POSITION INDICATION TEMPERATURE SPEED INDICATION STEAM/WATER FLOW GAS FLOW-USAGE CCF DIFF PRESSURE BTU/KWH HIGH/LOW LIMIT RUN TIME TOTALIZATION PROPORTIONAL PROP. + INTEGRAL TIME SCHEDULE S/S OPTIMUM START/STOP DAY/NIGHT SETBACK DEMAND LIMIT/CYCLE RESET OPTIMIZATION ECONOMIZER	START/STOP ENABLE/DISABLE OPEN/CLOSE START/STOP MAKE-UP SETPOINT ADJUST SPEED CONTROL DIFFERENTIAL PRESSURE PRESSURE SWITCH AUXILIARY CONTACT CURRENT RELAY DRIVE STATUS OPERATING STATUS POSITION INDICATION TEMPERATURE SPEED INDICATION STEAM/WATER FLOW GAS FLOW-USAGE CCF DIFF PRESSURE BTU/KWH HIGH/LOW LIMIT RUN TIME TOTALIZATION PROPORTIONAL PROP. + INTEGRAL TIME SCHEDULE S/S OPTIMUM START/STOP DAY/NIGHT SETBACK DEMAND LIMIT/CYCLE RESET OPTIMIZATION ECONOMIZER	ALARM	DDC	ENERGY MGMT.	LOGS	TREND LOG FAILURE MODE(SEE NOTES 1 AND 2)								
TAG	DESCRIPTION															
TT 1	HEATING WATER SUPPLY-CAMPUS LOOP															
TT 2	HEATING WATER RETURN-CAMPUS LOOP															
TT 3	HEATING WATER SUPPLY-BUILDING LOOP															
TT 4	HEATING WATER RETURN-BUILDING LOOP															
TT 5	HEATING WATER BYPASS LOOP															
DP 1	DIFFERENTIAL PRESS. SENSOR-CAMPUS LOOP															
DP 2	DIFFERENTIAL PRESS. SENSOR-BUILDING LOOP															
HP-1	HW PUMP - VFD CONTROL															O 3
VLV 1	VALVE-CAMPUS LOOP															L

- NOTES:
- FAILURE MODES:
O - OPEN OR ON
C - CLOSE OR OFF
L - LAST COMMAND
 - WHERE FAILURE MODE IS INDICATED, THE INDICATED POSITION SHALL OCCUR ON INTERRUPTION OF ELECTRIC POWER TO THE DDC PANEL.
 - PROVIDE FULL INTEGRATION THROUGH THE VFD BACNET INTERFACE CARD FOR INPUT OF ALL VFD OPERATING PARAMETERS TO THE BAS.



1 HEATING WATER FLOW DIAGRAM - HVAC
NOT TO SCALE



Copyright © 2023 Praxis3, LLC. All reports, plans, specifications, computer files, field notes, tables and other documents and instruments prepared by Praxis3 shall remain the property of Praxis3 and shall not be reproduced in whole or in part without written permission of Praxis3. It is to be returned upon request. Seals or stamps are valid on the original drawings.

Rev	Date	Comments
	06.15.23	Permit Set
1	12.07.23	Revision 1
2	04.30.24	Bid Set

Client:
Board of Regents of the U.S.G.
270 Washington ST, SW Atlanta, GA 30334
Project Number: 23090
Project Name:
J-361C ABAC Chambliss Hall Renovation

Tifton, GA

Sheet Title:
FLOW DIAGRAM - HEATING WATER - HVAC

Sheet Number:
M402