





NBP ENGINEERS, INC.  
 CO#NBP000074  
 EXPIRES: 06/30/2024

Copyright © 2023 Praxis3, LLC  
 All reports, plans, specifications, computer files, field notes, notes and other documents and instruments prepared by Praxis3 shall remain the property of Praxis3 and shall not be reproduced or transmitted in any form or by any means, electronic, mechanical, photocopying, recording, or by any information storage and retrieval system, without the prior written permission of Praxis3, LLC.

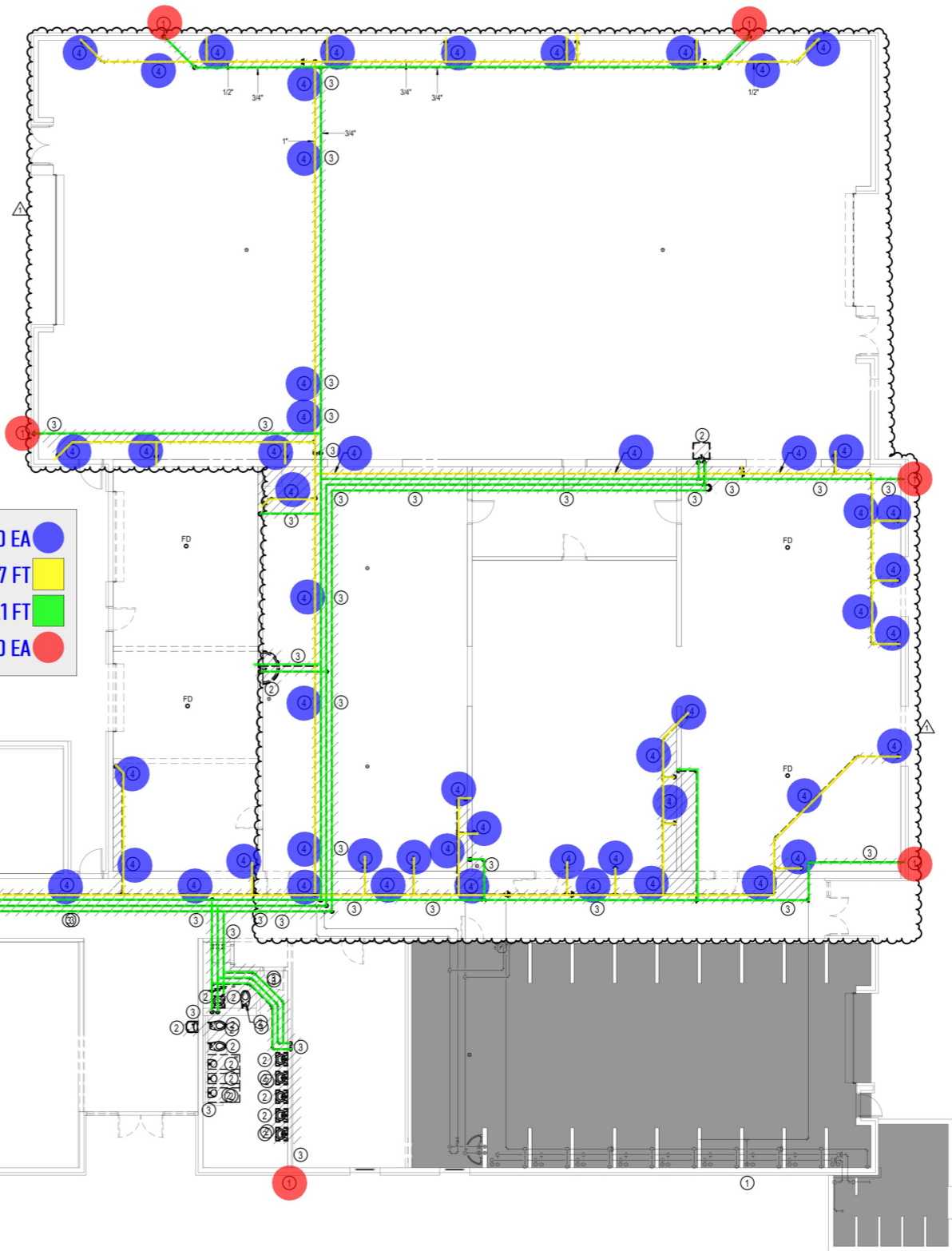
Rev	Date	Comments
	06.15.23	Permit Set
1	12.07.23	Revision 1
2	04.30.24	Bid Set

**NOTES:** (THIS SHEET ONLY)

- ① REMOVE AND REPLACE EXTERIOR NON FREEZE WALL HYDRANTS.
- ② REMOVE EXISTING FIXTURES, TRIM, AND ASSOCIATED PIPING.
- ③ REMOVE EXISTING DOMESTIC WATER PIPING ABOVE CEILING BACK TO MECHANICAL ROOM.
- ④ REMOVE EXISTING COMPRESSED AIR OUTLETS, VALVES AND PIPING BACK TO AIR COMPRESSOR IN EXISTING MECHANICAL ROOM.

**GENERAL NOTES:** (THIS SHEET ONLY)

- Ⓐ THE EXISTING WELDING SHOP SHALL REMAIN OPERATIONAL AND OCCUPIED BY THE OWNER THROUGHOUT THE DEMOLITION OF THE OTHER BUILDING SPACES, AND THROUGHOUT THE CONSTRUCTION OF THE NEW RENOVATED AREAS. ALL EXISTING EQUIPMENT, FIXTURES, DEVICES, AND UTILITIES REQUIRED FOR THE FUNCTIONALITY AND OPERATION OF THE EXISTING WELDING SHOP SHALL REMAIN IN SERVICE UNTIL THE RENOVATION IS COMPLETED. THE CONTRACTOR SHALL PROVIDE ANY TEMPORARY CONNECTIONS REQUIRED.



●	REMOVAL OF COMPRESSED AIR OUTLETS AND VALVES	56.0 EA	●
—	REMOVAL OF COMPRESSED AIR PIPE BACK TO MECHANICAL ROOM	671.7 FT	—
—	REMOVAL OF DOMESTIC WATER PIPE ABOVE CEILING BACK TO MECHANICAL ROOM	1290.1 FT	—
●	REMOVAL OF EXTERIOR NON FREEZE WALL HYDRANTS	12.0 EA	●

6/3/2024 2:07:26 PM

Client:  
**Board of Regents of the U.S.G.**

270 Washington ST, SW  
 Atlanta, GA 30334

Project Number: 23090  
 Project Name:

**J-361C ABAC Chambliss Hall Renovation**

Tifton, GA

Sheet Title:  
**DEMO FLOOR PLAN - UTILITIES - PLUMBING**

Sheet Number:  
**P102**

RELEASED FOR CONSTRUCTION

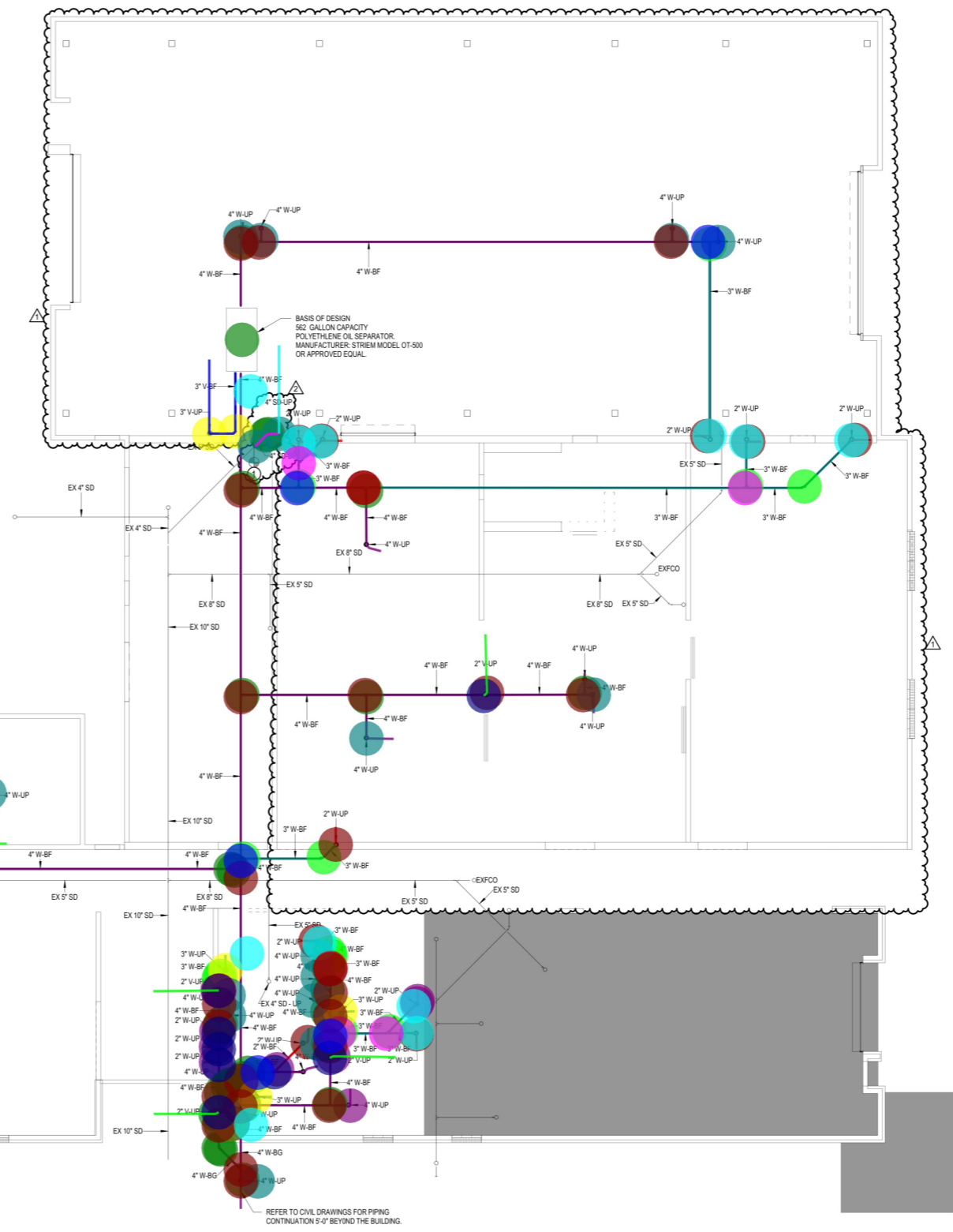
- WASTE PIPE- 2" 39.6 FT
- WASTE PIPE- 3" 208.1 FT
- WASTE PIPE- 4" 482.4 FT
- VENT PIPE - 2" 44.6 FT
- VENT PIPE - 3" 21.7 FT
- BG-STORM PIPE- 4" 4.0 FT
- STORM PIPE- 4"-AC 12.0 FT
- ELBOW 45 DEGREE- 2" 11.0 EA
- ELBOW 45 DEGREE- 3" 16.0 EA
- ELBOW 45 DEGREE- 4" 32.0 EA
- ELBOW 90 DEGREE- 2" 11.0 EA
- ELBOW 90 DEGREE- 3" 5.0 EA
- ELBOW 90 DEGREE- 4" 20.0 EA
- REDUCER 3"-2" 9.0 EA
- REDUCER 4"-2" 1.0 EA
- REDUCER 4"-3" 3.0 EA
- WYE- 3" 5.0 EA
- WYE- 4" 25.0 EA
- WYE- 4" - 2" 9.0 EA
- WYE- 4" - 3" 5.0 EA
- POLYETHYLENE OIL SEPARATOR, 562 GALLON CAPACITY, STRIEM MODEL OT-500 1.0 EA
- PD1-A - 3/4" WATER HAMMER ARRESTOR 3.0 EA

**GENERAL NOTES: (THIS SHEET ONLY)**

Ⓐ THE EXISTING WELDING SHOP SHALL REMAIN OPERATIONAL AND OCCUPIED BY THE OWNER THROUGHOUT THE DEMOLITION OF THE OTHER BUILDING SPACES, AND THROUGHOUT THE CONSTRUCTION OF THE NEW RENOVATED AREAS. ALL EXISTING EQUIPMENT, FIXTURES, DEVICES, AND UTILITIES REQUIRED FOR THE FUNCTIONALITY AND OPERATION OF THE EXISTING WELDING SHOP SHALL REMAIN IN SERVICE UNTIL THE RENOVATION IS COMPLETED. THE CONTRACTOR SHALL PROVIDE ANY TEMPORARY CONNECTIONS REQUIRED.

**NOTES: (THIS SHEET ONLY)**

① CONNECT NEW 4" STORM DRAIN PIPING TO EXISTING 5" STORM DRAIN PIPING BELOW THE FLOOR AT POINT SHOWN.



Copyright © 2023 Praxis3, LLC  
All reports, plans, specifications, computer files, field notes, notes and other documents and instruments prepared by Praxis3 shall remain the property of Praxis3 and shall not be reproduced or transmitted in any form or by any means, including electronic, mechanical, photocopying, recording, or by any information storage and retrieval system, without the prior written permission of Praxis3, LLC.

Rev	Date	Comments
	06.15.23	Permit Set
1	12.07.23	Revision 1
2	04.30.24	Bid Set

Client:  
**Board of Regents of the U.S.G.**  
270 Washington ST, SW  
Atlanta, GA 30334  
Project Number: 23090  
Project Name:  
**J-361C ABAC Chambliss Hall Renovation**

Tifton, GA

Sheet Title:  
**NEW UNDERSLAB PLAN - PLUMBING**

Sheet Number:  
**P201**





Copyright © 2023 Praxis3, LLC  
All reports, plans, specifications, computer files, field notes, notes and other documents and instruments prepared by Praxis3 shall remain the property of Praxis3 and shall not be reproduced, stored in a retrieval system, or transmitted in any form or by any means, electronic, mechanical, photocopying, recording, or by any information storage and retrieval system, without the prior written permission of Praxis3, LLC.

Rev	Date	Comments
0	06.15.23	Permit Set
1	12.07.23	Revision 1
2	04.30.24	Bid Set

Client:  
**Board of Regents of the U.S.G.**

270 Washington ST, SW  
Atlanta, GA 30334

Project Number: 23090  
Project Name:

**J-361C ABAC Chambliss Hall Renovation**

Tifton, GA

Sheet Title:  
**NEW FLOOR PLAN - UTILITIES - PLUMBING**

Sheet Number:

## P203

RELEASED FOR CONSTRUCTION

- 73.8 FT COLD WATER PIPE - 1"
- 3.4 FT COLD WATER PIPE - 1-1/2"
- 65.7 FT COLD WATER PIPE - 1-1/4"
- 115.9 FT COLD WATER PIPE - 1/2"
- 186.3 FT COLD WATER PIPE - 2"
- 366.5 FT COLD WATER PIPE - 3/4"
- 48.6 FT HOT RETURN WATER PIPE - 1/2"
- 195.3 FT HOT RETURN WATER PIPE - 3/4"
- 55.4 FT HOT WATER PIPE - 1"
- 150.9 FT HOT WATER PIPE - 1-1/4"
- 94.6 FT HOT WATER PIPE - 1/2"
- 18.1 FT HOT WATER PIPE - 3/4"
- 1.0 EA ESEW1: EMERGENCY SHOWER/EYE WASH
- 1.0 EA EW1: EYEWASH
- 1.0 EA EWC2: ELECTRIC WATER COOLER
- 1.0 EA IMB1: ICE MAKER SUPPLY BOX
- 8.0 EA NFHB - 3/4": NON FREEZE HOSE BIB
- 2.0 EA SK1: SINK
- 2.0 EA SK2: SINK
- 1.0 EA SS1: SERVICE SINK
- 1.0 EA BALACING VALVE - 1/2"
- 1.0 EA BALACING VALVE - 3/4"
- 3.0 EA BALL VALVE - 1/2"
- 8.0 EA BALL VALVE - 3/4"
- 1.0 EA CHECK VALVE - 1/2"
- 1.0 EA CHECK VALVE - 3/4"
- 2.0 EA EMERGENCY MIXING VALVE - 1/2"
- 40.0 EA ELBOW 90 DEG - 1-1/4"
- 2.0 EA ELBOW 90 DEG - 1/2"
- 26.0 EA ELBOW 90 DEG - 2"
- 3.0 EA ELBOW 90 DEG - 3/4"
- 2.0 EA REDUCER - 1" X 3/4"
- 2.0 EA REDUCER - 1-1/4" X 1"
- 2.0 EA REDUCER - 1-1/4" X 1/2"
- 1.0 EA REDUCER - 1-1/4" X 3/4"
- 1.0 EA REDUCER - 2" X 1"
- 1.0 EA REDUCER - 3/4" X 1/2"
- 2.0 EA TEE - 1" X 1/2"
- 5.0 EA TEE - 1-1/4"
- 1.0 EA TEE - 1-1/4" X 1"
- 1.0 EA TEE - 1-1/4" X 1/2"
- 1.0 EA TEE - 1-1/4" X 3/4"
- 2.0 EA TEE - 1/2"
- 2.0 EA TEE - 2"
- 1.0 EA TEE - 2" X 1-1/2"
- 2.0 EA TEE - 2" X 1/2"
- 1.0 EA TEE - 2" X 3/4"
- 4.0 EA TEE - 3/4"
- 4.0 EA TEE - 3/4" X 1/2"
- 89.6 FT COMPRESSED AIR PIPE - 1"
- 122.4 FT COMPRESSED AIR PIPE - 1-1/2"
- 25.1 FT COMPRESSED AIR PIPE - 1-1/4"
- 125.7 FT COMPRESSED AIR PIPE - 1/2"
- 269.0 FT COMPRESSED AIR PIPE - 3/4"
- 6.0 EA ELBOW 90 DEG - 1"
- 1.0 EA ELBOW 90 DEG - 1-1/2"
- 1.0 EA ELBOW 90 DEG - 1-1/4"
- 40.0 EA ELBOW 90 DEG - 1/2"
- 9.0 EA ELBOW 90 DEG - 3/4"
- 2.0 EA REDUCER - 1" X 3/4"
- 1.0 EA REDUCER - 1-1/2" X 1-1/4"
- 1.0 EA REDUCER - 1-1/2" X 3/4"
- 4.0 EA REDUCER - 3/4" X 1/2"
- 1.0 EA TEE - 1"
- 4.0 EA TEE - 1" X 1/2"
- 1.0 EA TEE - 1-1/2"
- 3.0 EA TEE - 1-1/2" X 1"
- 2.0 EA TEE - 1-1/2" X 3/4"
- 1.0 EA TEE - 3/4"
- 10.0 EA TEE - 3/4" X 1/2"
- 2.0 EA BALL VALVE - 1"
- 3.0 EA BALL VALVE - 1/2"
- 1.0 EA BALL VALVE - 3/4"
- 15.0 EA GLOBAL VALVE - 1/2"
- 2.0 EA GLOBAL VALVE - 3/4"
- 15.0 EA QUICK DISCONNECT - 1/2"
- 2.0 EA QUICK DISCONNECT - 3/4"
- 2.0 EA REGULATOR WITH PRESSURE GAUGE - 1"
- 18.0 EA REGULATOR WITH PRESSURE GAUGE - 1/2"
- 3.0 EA REGULATOR WITH PRESSURE GAUGE - 3/4"
- 15.0 EA RTI FILTER - 1/2", MILLER MODEL 300491
- 2.0 EA RTI FILTER - 3/4", MILLER MODEL 300491

**NOTES: (THIS SHEET ONLY)**

- CONNECT NEW 2" DOMESTIC WATER TO EXISTING 2" DOMESTIC WATER ABOVE THE CEILING AT POINT SHOWN.
- BALANCE VALVE SET AT 0.5 GPM.
- CHECK VALVE.
- EMERGENCY MIXING VALVE MOUNTED ON WALL ABOVE CEILING FOR EMERGENCY SHOWER/EYE WASH. SEE DETAIL P300.
- COMPRESSED AIR DROP. SEE DETAIL P300.
- PROVIDE CA WITH BALL VALVE AND INLINE REGULATOR FOR CONNECTION TO DRILL PRESSES. CONNECT PER MANUFACTURERS RECOMMENDATIONS.
- PROVIDE CA WITH BALL VALVE AND INLINE REGULATOR FOR CONNECTION TO MILL MILL. CONNECT PER MANUFACTURERS RECOMMENDATIONS.
- PROVIDE CA WITH BALL VALVE AND INLINE REGULATOR FOR CONNECTION TO CNC LATHE. CONNECT PER MANUFACTURERS RECOMMENDATIONS.
- PROVIDE CA WITH BALL VALVE AND INLINE REGULATOR FOR CONNECTION TO CNC LATHE. CONNECT PER MANUFACTURERS RECOMMENDATIONS.
- PROVIDE CA WITH BALL VALVE AND INLINE REGULATOR FOR CONNECTION TO MILL VM VS. CONNECT PER MANUFACTURERS RECOMMENDATIONS.
- PROVIDE 3/4" CONNECTION WITH BALL VALVE FOR CONNECTION TO CNC WATER JET. CONNECT PER MANUFACTURERS RECOMMENDATIONS.
- MIXING VALVE MOUNTED ON WALL ABOVE CEILING FOR EMERGENCY EYEWASH.

**GENERAL NOTES: (THIS SHEET ONLY)**

THE EXISTING WELDING SHOP SHALL REMAIN OPERATIONAL AND OCCUPIED BY THE OWNER THROUGHOUT THE DEMOLITION OF THE OTHER BUILDING SPACES, AND THROUGHOUT THE CONSTRUCTION OF THE NEW RENOVATED AREAS. ALL EXISTING EQUIPMENT, FIXTURES, DEVICES, AND UTILITIES REQUIRED FOR THE FUNCTIONALITY AND OPERATION OF THE EXISTING WELDING SHOP SHALL REMAIN IN SERVICE UNTIL THE RENOVATION IS COMPLETED. THE CONTRACTOR SHALL PROVIDE ANY TEMPORARY CONNECTIONS REQUIRED.



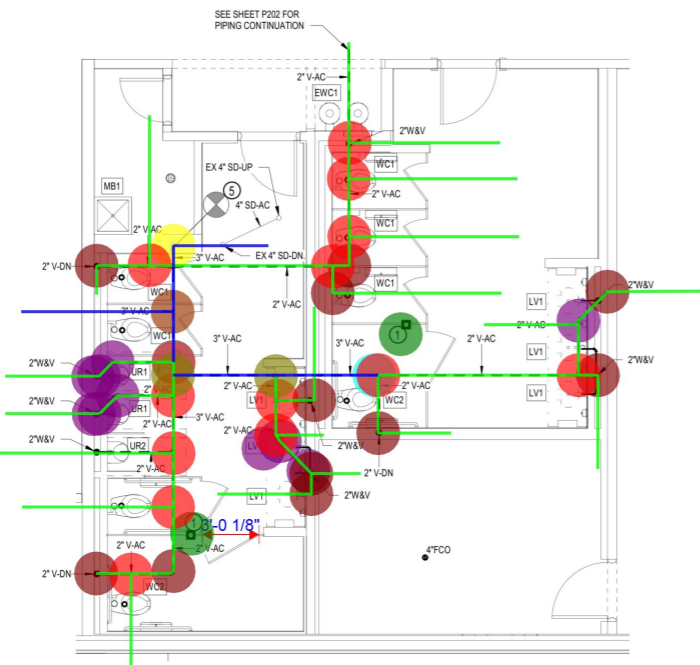
6/3/2024 2:07:33 PM



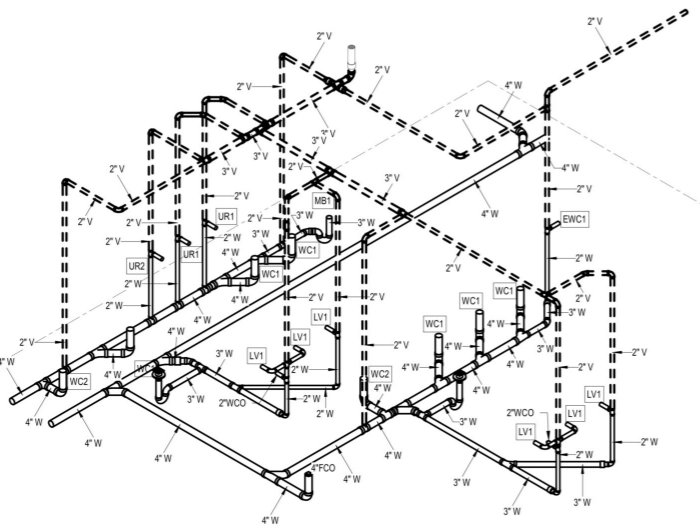
Copyright © 2023 Praxis3, LLC  
All reports, plans, specifications, computer files, field notes, notes and other documents and instruments prepared by Praxis3 shall remain the property of Praxis3 and shall not be reproduced or transmitted in any form or by any means, including electronic, mechanical, photocopying, recording, or by any information storage and retrieval system, without the prior written permission of Praxis3, LLC.

Rev	Date	Comments
1	12.07.23	Revision 1
2	04.30.24	Bid Set

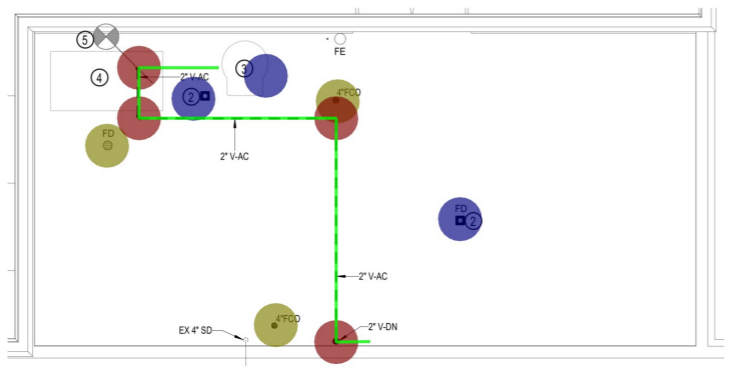
- COLD WATER PIPE - 1" 72.0 FT
- COLD WATER PIPE - 1-1/2" 32.2 FT
- COLD WATER PIPE - 1-1/4" 8.6 FT
- COLD WATER PIPE - 1/2" 84.8 FT
- COLD WATER PIPE - 2" 32.2 FT
- COLD WATER PIPE - 3/4" 90.2 FT
- HOT RETURN WATER PIPE - 3/4" 90.0 FT
- HOT WATER PIPE - 1" 9.0 FT
- HOT WATER PIPE - 1-1/4" 26.2 FT
- HOT WATER PIPE - 1/2" 0.0 FT
- HOT WATER PIPE - 3/4" 53.7 FT
- HOT WATER PIPE - 3/8" 66.6 FT
- CHROME PLATED HOSE BIB - 1/2" 2.0 EA
- EWC1: ELECTRIC WATER COOLER 1.0 EA
- LV1: LAVATORY 6.0 EA
- MB1: MOP BASIN 1.0 EA
- UR1: URINAL 2.0 EA
- UR2: URINAL 1.0 EA
- WC1: WATER CLOSET 6.0 EA
- WC2: WATER CLOSET 2.0 EA
- WH-C1, ELECTRIC WATER HEATER 1.0 EA
- BALACING VALVE - 3/4" 2.0 EA
- BALL VALVE - 1" 1.0 EA
- BALL VALVE - 1/2" 1.0 EA
- BALL VALVE - 2" 3.0 EA
- BALL VALVE - 3/4" 4.0 EA
- BALL VALVE - 3/8" 1.0 EA
- CHECK VALVE - 3/4" 2.0 EA
- ELBOW 90 DEG - 1" 18.0 EA
- ELBOW 90 DEG - 1-1/4" 4.0 EA
- ELBOW 90 DEG - 1/2" 20.0 EA
- ELBOW 90 DEG - 3/4" 29.0 EA
- ELBOW 90 DEG - 3/8" 14.0 EA
- REDUCER - 1" X 3/4" 1.0 EA
- REDUCER - 1-1/2" X 1-1/4" 2.0 EA
- REDUCER - 1-1/2" X 3/4" 1.0 EA
- REDUCER - 1-1/4" X 1" 2.0 EA
- REDUCER - 2" X 1-1/2" 2.0 EA
- REDUCER - 2" X 3/4" 2.0 EA
- REDUCER - 3/4" X 1/2" 0.0 EA
- TEE - 1" X 1/2" 1.0 EA
- TEE - 1" X 3/4" 1.0 EA
- TEE - 1" X 3/8" 3.0 EA
- TEE - 1-1/2" X 1" 3.0 EA
- TEE - 1-1/2" X 3/4" 2.0 EA
- TEE - 1/2" 3.0 EA
- TEE - 2" 3.0 EA
- TEE - 2" X 1" 1.0 EA
- TEE - 2" X 1/2" 4.0 EA
- TEE - 3/4" 4.0 EA
- TEE - 3/4" X 1/2" 6.0 EA
- TEE - 3/4" X 3/8" 18.0 FT
- COMPRESSED AIR PIPE - 1-1/2" 1.0 EA
- ELBOW 90 DEG - 1-1/2" 232.2 FT
- VENT PIPE - 2" 30.3 FT
- VENT PIPE - 3" 3.0 EA
- FLOOR CLEANOUT - 4" 2.0 EA
- FLOOR DRAIN W/ TRAP SEALER ASSEMBLY TYPE ... 2.0 EA
- FLOOR DRAIN W/ TRAP SEALER ASSEMBLY TYPE ... 2.0 EA
- WALL CLEANOUT - 2" 1.0 EA
- ELBOW 45 DEGREE - 2" 9.0 EA
- ELBOW 90 DEGREE - 2" 16.0 EA
- ELBOW 90 DEGREE - 3" 1.0 EA
- REDUCER 3" - 2" 2.0 EA
- TEE - 2" 14.0 EA
- TEE - 3" 1.0 EA
- TEE - 3" - 2" 2.0 EA
- RCP-C1: RECIRCULATOR PUMP 1.0 EA



1 LARGE SCALE TOILET PLAN - DWV - PLUMBING  
1/4" = 1'-0"

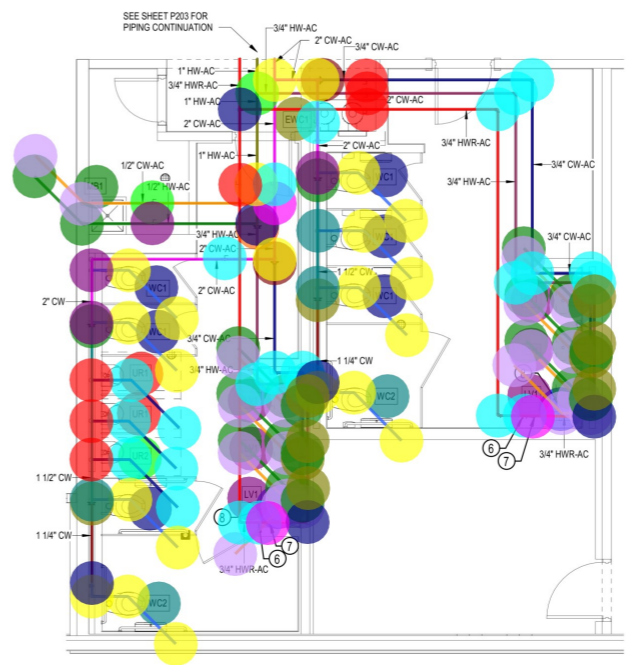


3 TOILET WASTE RISER

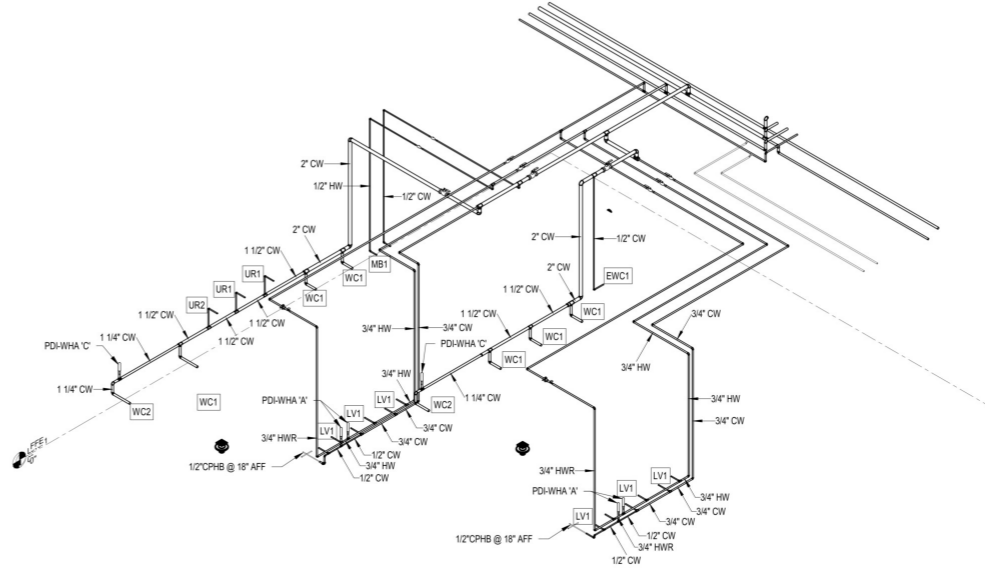


5 LARGE SCALE MECHANICAL PLAN - DWV - PLUMBING  
1/4" = 1'-0"

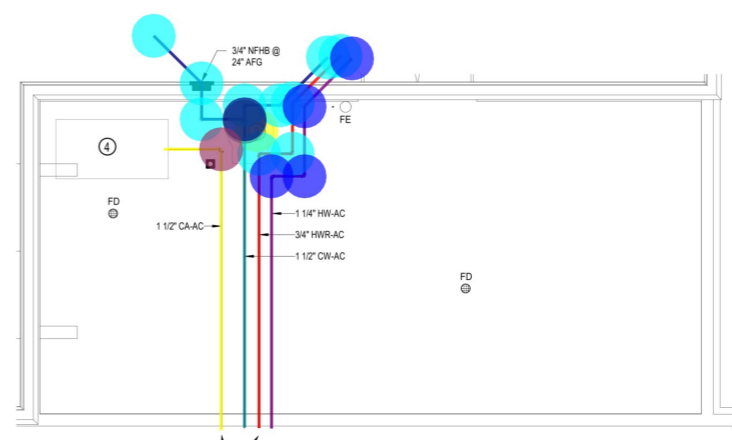
- NOTES:** (THIS SHEET ONLY)
- 1 3" FLOOR DRAIN TYPE 'A' WITH TRAP SEALER ASSEMBLY.
  - 2 4" FLOOR DRAIN TYPE 'B' WITH TRAP SEALER ASSEMBLY.
  - 3 ELECTRIC WATER HEATER WH-C1.
  - 4 EXISTING AIR COMPRESSOR.
  - 5 CONNECT NEW VENT PIPING TO EXISTING VENT THRU THE ROOF ABOVE THE CEILING AT POINT SHOWN.
  - 6 BALANCE VALVE SET AT 0.5 GPM.
  - 7 CHECK VALVE.
  - 8 1/2" CHROME PLATED HOSE BIB AT 18" AFF.



2 LARGE SCALE TOILET PLAN - UTILITIES - PLUMBING  
1/4" = 1'-0"



4 TOILET UTILITY RISER



6 LARGE SCALE MECHANICAL PLAN - UTILITIES - PLUMBING  
1/4" = 1'-0"

Client:  
**Board of Regents of the U.S.G.**

270 Washington ST, NW Atlanta, GA 30334

Project Number: 23090  
Project Name:

**J-361C ABAC Chambliss Hall Renovation**

Tifton, GA

Sheet Title:  
**LARGE SCALE PLANS - PLUMBING**

Sheet Number:  
**P301**